

IMPORTANT

*Report in part or whole
cannot be quoted or
reproduced*

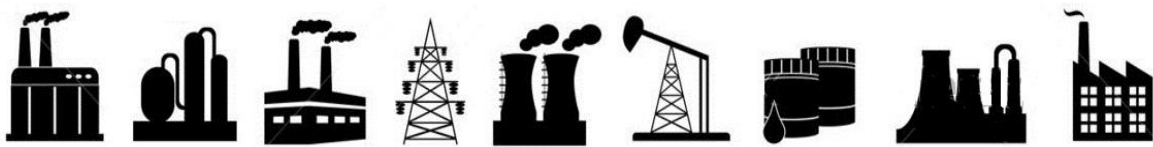
RESTRICTED

For official use only

APRIL 2023



**MONTHLY SURVEY OF INDUSTRIAL
PRODUCTION & EMPLOYMENT IN THE PUNJAB**



BUREAU OF STATISTICS

Planning & Development Board

Government of the Punjab

www.bos.gop.pk

PREFACE

Bureau of statistics has been issuing this Monthly Survey of Industrial Production and Employment Report since October 1972. This report provides important statistics in respect of industrial production & employment, employment cost and other aspects of manufacturing activities e.g. consumption of raw material, export of industrial products, import of raw material and productivity of labour etc. These statistics are pre-requisite for sound economic planning as well as for measuring the performance/growth of the industrial sector (GDP estimates regarding industrial sector).

This report contains statistics regarding 45 important industries, manufacturing about almost selected items, contributing 72% of the total value added of large scale manufacturing sector in the province. This report covers more than 2000 industrial units from all over the Punjab.

This report gives information regarding General Index as compared to base period 2005-06, and comprehensive analytical note over the current status of the industrial growth at different sectors. Tables of production & employment give comparisons with the previous month and the same month of the previous year as well as comparisons among financial periods. Performance analysis of 13 major items pertaining to detailed tables & graphical explanation is given in this report.

All possible efforts have been made to incorporate the latest available data in this report. It is hoped that this report will be useful to the policy makers, planners, researchers and other users of industrial/economic data in public as well as private sector.

Suggestions for further improvements will be welcomed.

(SAJID RASUL)
Director General
Bureau of Statistics,
Government of the Punjab

CONTENTS

Sr.#	Description	Page #
i	Explanatory Note	I – IV
ii	Table of General Index of Industrial Production	1
iii	Analytical Note: Industrial Production and Employment April 2023	2 - 3

TABLES

1	Production Volume of Selected Items Pertaining to Large-Scale Manufacturing Sector, April 2023 VS March 2023	4 - 5
2	Production Volume of Selected Items Pertaining to Large-Scale Manufacturing Sector, April 2023 VS April 2022	6 - 7
3	Production Volume of Selected Items Pertaining to Large-Scale Manufacturing Sector, 2022-23 (Jul - Apr:) VS 2021-22 (Jul – Apr:)	8 - 9
4	Total Employment Regarding Large-Scale Industries, April 2023, March 2023 and April 2022	10
5	Total Number of Production Workers Regarding Large-Scale Industries, March 2023, April 2023 and April 2022	11
6	Average Monthly Total Employment Regarding Large-Scale Industries, 2022-23 (Jul - Apr:) VS 2021-22 (Jul - Apr:)	12
7	Average Monthly Number of Production Workers Regarding Selected Large Scale Industries, 2022-23 (Jul - Apr:) VS 2021-22 (Jul – Apr:)	13

ANNEXURES

I	Performance of Cotton Textile Industry	14 - 20
II	Performance of Woollen Textile Industry	21 - 23
III	Performance of Vegetable Ghee/Cooking Oil Industry	24 - 28
IV	Performance of Beverages Industry	29 - 30
V	Performance of Sugar Industry	31 - 33
VI	Performance of Cigarettes Industry	34 - 35
VII	Performance of Cement Industry	36 - 40
VIII	Performance of Fertilizer Industry	41 - 46
IX	Performance of Footwear Industry	47 - 48
X	Performance of Leather Tanning Industry	49 - 50
XI	Performance of Paper & Paper Board Industry	51 - 52
XII	Performance of Light Engineering Industry	53 - 59
XIII	Performance of Pharmaceutical Industry	60 - 63

APPENDIX

A	Telephone Numbers	64
---	-------------------	----

List of Tables

Table No.	Title of Table	Page No.
1	General Index of Industrial Production	1
2	Production Volume of Selected Items Pertaining to Large-Scale Manufacturing Sector, April -2023 VS March -2023	4
3	Production Volume of Selected Items Pertaining to Large-Scale Manufacturing Sector, April -2023 VS April 2022	6
4.	Production Volume of Selected Items Pertaining to Large-Scale Manufacturing Sector 2022-23,(July- April) VS 2021-2022 (July- April)	8
5	Total Employment Regarding Selected Large-Scale Industries, March 2023, April 2023 and April 2022.	10
6	Total Number of Production Workers Regarding Selected Large-Scale Industries March 2023, April 2023 and April 2022	11
7.	Average Monthly Total Employment Regarding Selected Large-Scale Industries 2022-23 (July- April) and 2021-22 (July- April)	12
8	Average Monthly Production Workers regarding selected Large-Scale Industries 2022-23 (July- April) and 2021-22 (July- April)	13
9	Production of Man Made/Blended Yarn and Cloth	15
10	Detail of the Purchase, Sale Consumption and Stock of Cotton Bales.	17
11	Production, Purchase, Consumption, Sale and Stock of Cotton Yarn	18
12	Production .Purchase, Sale and Stock of Cotton Cloth	19
13	Employment, Wages/Salaries of Cotton Textile Industry	20
14	Manufacturing Activity of Woollen Industry	23
15	Detail of the Stock Purchase, Consumed and Sale of Edible Oil	26
16	Detail of Production, Sale and Stock of Vegetable Ghee/Cooking Oil	27
17	Employment, Wages/Salaries of Vegetable Ghee/Cooking Oil Industry	28
18	Manufacturing Activity of Beverages Industry	30
19	Manufacturing Activity of Sugar Industry	32
20	Employment, Wages/Salaries of Sugar Industry	33
21	Manufacturing Activity of Cigarettes Industry	35
22	Detail of Production, Consumption and Stock of Clinker	38
23	Detail of Production, Sale and Stock of Cement	39
24	Employment and Wages/Salaries of Cement Industry	40
25	Detail of Production, Sale and Stock of Urea and Amm. Sulphate	43
26	Detail of Production, Sale and Stock of Super Phosphate and Amm.Nitrate	44
27	Detail of Production, Sale and Stock of Nitro Phosphate	45
28	Employment Wages/Salaries of Fertilizer Industry	46
29	Manufacturing Activity of Footwear Industry	48
30	Manufacturing Activity of Leather Tanning Industry	50
31	Manufacturing Activity of Paper and Paper Board Industry	51
32	Manufacturing Activity of Light Engineering Industry	57
33	Total Employment of Light Engineering Industry	58
34	Production Workers of Light Engineering Industry	59
35	Manufacturing Activity of Pharmaceutical Industry	62
36	Employment and Wages/Salaries of Pharmaceutical Industry	63

List of Figures

Fig. No.	Title of Figures	Page No.
1	Quantum Index of Manufacturing Industries	1
2	Production of Cotton Yarn	16
3	Production of Cotton Cloth	16
4	Production of Knitting Wool	21
5	Production of Woollen Yarn	22
6	Production of Woollen and Worsted Cloth	22
7.	Production of Vegetable Ghee	24
8	Production of Cooking Oil	25
9	Production of Vegetable Ghee/Cooking Oil	25
10	Production of Fruit Juices	29
11	Production of Soft Drinks	29
12	Production of Sugar	31
13	Production of Cigarettes	34
14	Production of Clinker	36
15	Production of Cement	37
16	Production of Urea	41
17	Production of Super Phosphate	42
18	Production of Amm. Nitrate	42
19	Production of Nitro Phosphate	42
20	Production of Footwear	47
21	Production of Upper Leather	49
22	Production of Sole Leather	49
23	Production of Paper	51
24	Production of Paper Board	51
25	Production of Re-Rolled Steel	53
26	Production of Bicycles	54
27	Production of Electric Fans	55
28	Production of Electric Motors	56
29	Production of Diesel Engines	56
30	Production of Tablets	60
31	Production of Liquids	61
32	Production of Capsules	61
33	Production of Injections	61

I
EXPLANATORY NOTE

To have current information on production, employment and other aspects of manufacturing activities e.g. consumption of raw material, wages/salaries, export of industrial products, imports of raw material and productivity of labour etc. for economic planning, evaluation of industrial development and taking other policy related decisions, Government of the Punjab had decided in October 1972 to undertake a Monthly Survey on Industrial Production and Employment.

Prior to this Survey, the only data available on Industrial Statistics was the results of Census of Manufacturing Industries (C.M.I) that were available with the time lag of 2-3 years with a question mark on very high rate of non- response. This high rate of non-response affected the consistency of the results. Therefore, these results were of little use for current and future planning except for historical, research and academic interests/purposes. So Monthly Survey of Industrial Production and Employment was considered to be suitable for Economic Planning as well as for measuring the performance/growth of the industrial sector.

Only 15 industries and their 113 factories were selected to cover initially in October 1972. This report now contains statistics regarding 45 important industries, manufacturing about 100 selected items, contributing 72% of the total value added of large scale manufacturing sector in the province based on base year 2005-06 and covers more than 2000 industrial units from all over the Punjab.

Questionnaire

Keeping in view the pre-determined purpose the data on Industrial Inputs (raw material), Outputs (finished products), Sales, exports, Stocks, Employment & Employment Cost etc. are designed on the available information from CMI returns. These Questionnaires have been pre-tested in some of the large units manufacturing the respective items.

Methodology

Basically it is a mail enquiry. The respondents are the factory owners or the factory management (i.e. Accountants, Finance Manager, and Mill Manager etc.) The blank questionnaires of various industries are used to be mailed out to the factories for their use for the supply of the required information every month. About 60% to 70% questionnaires are received through mail. While the remaining non-responding industrial units are visited by the officers/officials of this Bureau during the third week of the following month for collection of requisite information.

Editing

The received questionnaires are statistically examined for the accuracy and consistency by comparing the production and employment levels of the current month with previous month and same month of the last year. The information of the factories which could not be collected during the month due to the absence of the concerned person or due to other reason is estimated on the basis of the last months' average production or the last month information is repeated.

Tabulation

The information collected is tabulated on working sheets prepared for this purpose and also on computer for each industry/factory. Seven tables are prepared every month on production, total employment and production workers as well as comparisons are made with respect to last month, with same month of the last year and among current & previous financial years.

General index / Quantum Index of Manufacturing (QIM)

At present Punjab Bureau of Statistics is computing Index on Industrial Production using 2005-06 as base year. Index series is given in this report by using Laspayer's Index since 2006-07.

This Bureau initially prepared Index Series using 1970-71 as base year. Later on the base year was shifted to 1980-81 & then in October 2011 the base year was sifted to 2005-06. Majority of some new items are included in the new index series due to their relative weight and some items were discarded due to their negligible weights.

Formula of Quantum Index

$$QIM = \frac{\sum_{i=1}^n \frac{q_{im}}{q_{io}} w_i}{\sum_{i=1}^n w_i} \times 100$$

q_{im} = Production of i^{th} item during the current month

q_{io} = Average Production of the same i^{th} item in the base period (2005-06).

w_i = Weight of the i^{th} item in the base year (2005-06).

$\sum w_i$ = total weight of 45 large scale industries in the base period with respect to the total value added of all the industries covered in CMI in the base year (2005-06).

Final Product

Final product is a CIS report that contains QIM series, analytical note on the performance of Industrial Sector in the province, seven tables, and detailed performance report of some important industries as well.

User Agencies

- i. Ministry of Industries & Production, Government of the Pakistan, Islamabad.
- ii. Pakistan Bureau of Statistics, Government of Pakistan, Islamabad.
- iii. Provincial Bureaus of Statistics, Government of Sindh, KPK and Baluchistan.
- iv. Planning & Development Department, Government of the Punjab.
- v. Punjab Economic Research Institute (PERI).
- vi. Department of Commerce & Industry, Government of the Punjab.
- vii. State Bank of Pakistan

IMPORTANT DEFINITIONS

Factory

An entity where manufacturing process is carried out on any day of the preceding thirty days and in any part of which manufacturing process is being carried on with or without the aid of power or through chemical process. It does not include the Mine subject which comes under the operation of Mines Act 1923.

Large Scale Manufacturing Industries

Establishments where ten or more employees are working are classified as large scale industry.

Employment

This item include all full time and part time employees on the payrolls of operating manufacturing establishment during any part of the pay period of the month specified on the questionnaire. It should include all the employees on paid sick leave paid holidays, and paid vacations. Proprietors and partners of unincorporated business may not be included.

Production Workers

The “Production Workers” includes workers (up through the line-supervisor level) engaged in fabricating, processing, assembling, inspecting, receiving, storing, handling, packing, warehousing, shipping (but no delivering), maintenance, repair, product development, auxiliary production for plant’s own use (e.g., power plant). Record keeping and other services closely associated with these production operations at the establishment covered by the report.

Non-Production Workers

The employees those are not involved directly in the manufacturing process are called non-production workers. E.g. Managers, Assistants, Clerks, Drivers, Peons, Malies and Chowkidars etc.

Employment Cost

Wages and salaries of all employees including production and non-production workers is called employment cost.

TABLE 1: GENERAL INDEX OF INDUSTRIAL PRODUCTION
FOR THE PERIOD JULY 2016 – APRIL 2023
(2005-06=100)

MONTH/ YEAR	2016 - 17	2017 - 18	2018 - 19	2019 - 20	2020 - 21	2021 - 22	2022 - 23
JUL:	144.9	152.5	156.5	155.5	160.2	171.1	161.6
AUG:	150.8	154.7	154.3	152.8	155.2	171.8	165.9
SEP:	144.4	152.9	158.1	159.3	169.3	171.0	170.9
OCT:	148.9	160.1	168.7	171.7	176.5	177.6	172.2
NOV:	157.6	153.1	160.6	167.8	179.5	185.1	171.5
DEC:	186.9	178.1	168.7	182.2	216.6	213.2	221.8
JAN:	188.4	213.9	210.3	202.2	208.5	220.5	229.3
FEB:	183.2	222.1	198.9	203.5	207.4	225.1	238.4
MAR:	193.3	245.0	251.9	186.9	213.6	217.8	214.3
APR:	171.5	186.5	197.9	140.0	188.4	183.9	163.6
MAY:	158.6	168.2	175.3	140.0	179.3	172.3	
JUN:	150.6	161.9	160.0	146.3	172.3	181.3	
Average*	164.0	176.8	178.1	166.0	184.5	189.8	188.8

* = Geometric Mean

Fig. 1 **Graph of Quantum Index of Manufacturing Industries.**

(2005-06=100)

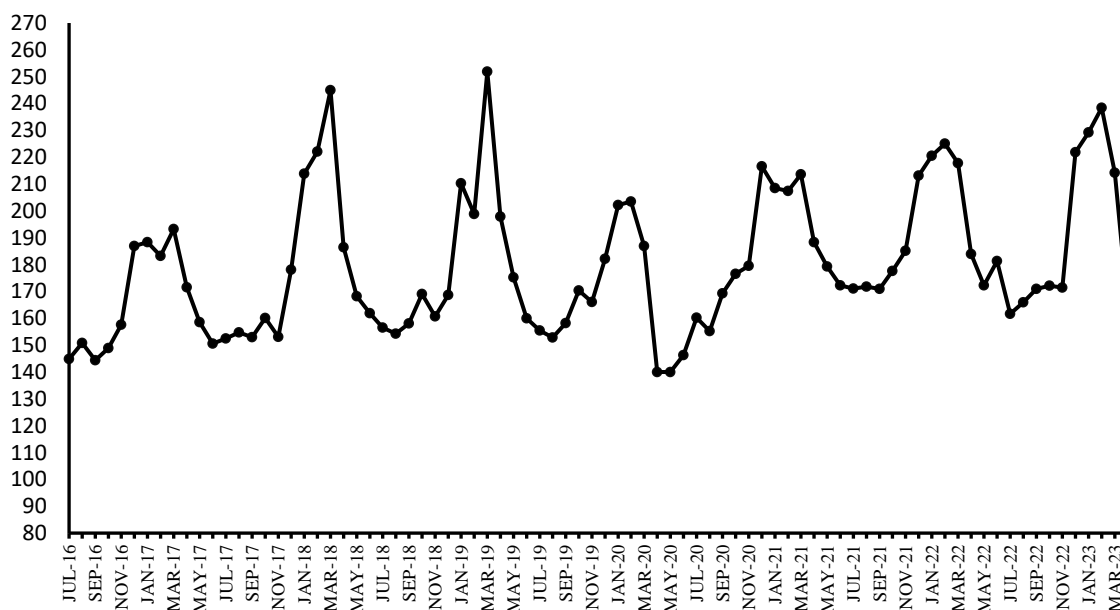


Figure: Graph of QIM for the period of July 2016 to April 2023

ANALYTICAL ANALYSIS

INDUSTRIAL PRODUCTION AND EMPLOYMENT (April 2023)

Coverage

This report covers 2041 industrial units pertaining to large scale industries which contribute about 72 percent of the total value added of Large-Scale Manufacturing sector in the Punjab.

Industrial Production Index

Industrial Production Index for the month of April-2023 stood at 163.6 against 214.3 and 183.9 as compared to March-2023 and April-2022 respectively. Index Series since July-2016 is given in Table-1 on previous page.

Production April 2023 VS March 2023 (Table-2)

Overall production during the month of April-2023 was 23.7 percent lower than March-2023.

The production was lower in case of Dairy Products (30.8%), Paper and Paper Board (19.5%), Petroleum Products (9.9%), Cement (22.1%) and Fabricated Metal Products/HMC (11.1%).

The production was higher in case of Fertilizers (20.9%), Tractors (70.7%), Electric Fans (8.2%) and Air-conditioners (24.9%).

Production April 2023 VS April 2022 (Table-3)

Overall production during April-2023 was 11.0 percent lower than April-2022.

The production was lower in case of Wheat Milling (6.1%), Soft Drink & Juices (8.7%), Cigarettes (12.2%), Cotton/M.M Blended Yarn (9.0%), Cloth/M.M Blended Cloth (13.8%), Woolen Textile (11.3%), Upper Leather (9.5%), Ply wood (9.8%), Paper & Paper Board (22.2%), Paint & Varnishes (6.0%), Soap (6.5%), Synthetic Fiber (7.4%), Cement (23.1%), Steel Bars/ Angles (12.4%), Fabricated Metal Products/HMC (63.6%), Tractors (54.5%), Automobile Cars/Trucks (73.1%), Deisal Engines (52.5%), Motor Cycles (40.5%), Electric Fans (17.3%), Electric Motors (22.1%), Electric Meters (18.7%), Air Conditioner (78.5%), Refrigerators/Deep Freezers (51.5%) and Safety Razor Blades (13.3%).

The production was higher in case of Vegetable Ghee/Cooking Oil (10.7%), Footwear (6.3%), Pharmaceuticals (19.2%), Glass Sheet (93.4%) and Agricultural Implements (5.4%).

Production July-April 2022-23 VS July-April 2021-22 (Table-4)

Overall production during July-April (2022-23) was 2.0 percent lower than July-April (2021-22).

The Production was lower in case of Wheat Milling (12.9%), Cigarettes (13.9%), Ply Wood (47.6%), Paper & Paper Board (7.1%), Petroleum Products (12.3%), Cement (11.0%), Steel Bars/Angles (5.3%), Fabricated Metal Products/HMC (35.4%), Tractors (41.2%), Automobiles Cars/Trucks (66.2%), Motor Cycles (30.8%), Electric Fans (14.5%), Electric Motors (17.2%), Air-Conditioners (41.7%), Refrigerators/Deep Freezers (34.9%), Safety Razor Blades (10.5%) and Agricultural Implements (6.3%).

The production was higher in case of Vegetable Ghee/Cooking Oil (11.0%), Dairy Products (7.6%), Sugar (6.0%), Starch & its Products (5.2%), Soft Drinks & Juices (5.1%), Woolen Textiles (5.9%), Upper Leather (10.3%), Footwear (8.5%), Pharmaceuticals (9.8%), Glass Sheets (131.0%), Diesel Engines (23.0%) and Bicycles (6.1%).

Employment April 2023 VS March 2023 and April 2022 (Table-5)

Total employment during April 2023 was 2.2 percent lower and 4.7 percent lower than March 2023 and April 2022 respectively.

Average Employment July-April 2022-23 VS July-April 2021-22 (Table-7)

Average monthly employment during the period of July-April (2022-23) was 2.1 percent lower than the corresponding period of the previous year.

Table 2: Production Volume of Selected Items Pertaining to Large-Scale Manufacturing Sector, April 2023 VS March 2023

Group/Items	No. of Units Covered in April: 2023	Weight with 2005-06 base	Unit of Quantity	Production		Index of Production in April:2023 with Mar: 2023
				April: 2023	Mar: 2023	
I Food Drinks & Tobacco	910					
1 Vegetable Ghee/Cooking Oil	44	5.00	M.Tons	100788	99740	101.1
i) Vegetable Ghee	44		M.Tons	81823	80911	101.1
ii) Cooking Oil	18		M.Tons	18965	18829	100.7
2 Dairy Products	8	4.13				69.2
i) Process/UHT Milk		1.62	`000` Litres	37956	41486	91.5
ii) Milk Powder		0.87	M.Tons	1231	2148	57.3
iii) Cheese		0.01	M.Tons	931	1198	77.7
iv) Butter/ Desi Ghee		0.33	M.Tons	465	853	54.5
v) Cream		1.04	M.Tons	881	1331	66.2
vi) Yoghurt		0.26	M.Tons	0	0	
3 Wheat Milling	776	1.25	M.Tons	817788	820134	99.7
4 Sugar	44	3.77	M.Tons	0	947181	
5 Tea (Blended)	3	0.03	M.Tons	6780	8488	79.9
6 Starch & its Products	2	0.56	M.Tons	36275	36213	100.2
i) Starch			M.Tons	21605	21569	100.2
ii) Glucose			M.Tons	14670	14644	100.2
7 Soft Drinks & Juices	30	0.82	`000` Litres	243376	232355	104.7
i) 7-up Coca Cola etc.	17		`000` Litres	221576	206094	107.5
ii) Fruit Juices	16		`000` Litres	20878	20937	99.7
iii) Syrups & Squashes	2		`000` Litres	922	5324	17.3
8 Cigarettes	3	0.59	M. Nos	1252	1317	95.1
II Textiles	312					
1 Cotton Textiles	285					
i) Cotton/M. M Blended Yarn	247	15.40	M.Tons	125221	124066	100.9
ii) Cloth/M. M Blended Cloth	48	10.20	000 Mtrs.	59236	59800	99.1
2 Woolen Textiles	21	0.52	M.Tons	599	618	96.9
i) Woolen Yarn	14		M.Tons	579	598	96.8
ii) Knitting Wool	3		M.Tons	0	0	
iii) Woolen & Worsted Cloth	14		M.Tons	20	20	100.0
iv) Carpets	5	0.77	000 Mtrs.	0	0	
3 Jute Textiles	6	0.28	M.Tons	5095	5112	99.7
i) Jute Sacking				3844	3845	100.0
ii) Jute Hessian				925	935	98.9
iii) Jute Twine				326	332	98.2
III Leather Rubber & Plastic Products	147					
1 Leather Tanning	106					
i) Upper Leather	95	0.49	000 Sq. Mtrs.	716	752	95.2
ii) Sole Leather	11		M.Tons	16	16	100.0
2 Footwear	41	0.90	000 Pairs	2653	2659	99.8
IV Ply Wood	6	0.44	000 Sq. Feet	526	520	101.2
V Paper & Paper Board	47	4.19	M.Tons	46276	57494	80.5
1 Paper				18012	18154	99.2
i) Writing			M.Tons	8285	9780	84.7
ii) Printing			M.Tons	4631	2428	190.7
iii) Packing & Others			M.Tons	5096	5946	85.7
2 Paper Board			M.Tons	28264	39340	71.8
VI Chemical & Petroleum Products	139					
1 Pharmaceuticals	36	1.15				100.0
i) Tablets	28	0.38	000 Nos.	278114	267410	104.0
ii) Liquids (Syrups & Drops)	27	0.48	000 Ltrs.	1864	1886	98.8
iii) Capsules	19	0.08	000 Nos.	42917	40997	104.7
iv) Injections	12	0.14	000 Nos.	14912	14702	101.4
v) Ointments	7	0.03	Kgs.	53160	51192	103.8
vi) Galenicals	6	0.04	000 Ltrs.	3	5	60.0
2 Basic Inorganic Chemicals/Acids	8	1.34		108013	111255	97.1
i) Caustic Soda	2		M.Tons	24412	24902	98.0
ii) Hydrochloric Acid	2		M.Tons	46015	49055	93.8
iii) Chlorine Liquids	2		M.Tons	1698	1742	97.5
iv) Soda Ash	2		M.Tons	33139	32758	101.2
v) Sulphuric Acid	5		M.Tons	2749	2798	98.2

Group/Items	No. of Units Covered in April: 2023	Weight with 2005-06 base	Unit of Quantity	Production		Index of Production in April:2023 with Mar: 2023
				April: 2023	Mar: 2023	
3 Fertilizers	7	7.18	M.Tons	435465	360050	120.9
i) Urea	4		M.Tons	299647	260230	115.1
ii) Amm. Nitrate	1		M.Tons	74016	57015	129.8
iii) Amm. Sulphate	0		M.Tons	0	0	
iv) Super Phosphate	1		M.Tons	0	0	
v) Nitro Phosphate	1		M.Tons	61802	42805	144.4
4 Paints & Varnishes	12	0.65		9323	9585	97.3
i) Paints		0.01	M.Tons	6509	6788	95.9
			`000` Litres	2785	2768	100.6
ii) Varnishes		1.04	M.Tons	16	16	100.0
		0.26	`000` Litres	13	13	100.0
5 Tyres & Tubes	6	0.12	`000` Nos.	3231	3182	101.5
i) Cycle Tyres				336	325	103.4
ii) Automobile Tyres				442	426	103.8
iii) Cycle Tubes				590	587	100.5
iv) Automobile Tubes				1863	1844	101.0
6 Soap	62	0.07	M.Tons	20721	21439	96.7
i) Toilet Soap	7			3465	3311	104.7
ii) Washing Soap	62			17256	18128	95.2
7 Matches	2	0.00	M. Box * 40 Sticks	611	614	99.5
8 Synthetic Fibre	4	0.95	M.Tons	42685	42870	99.6
9 Petroleum Products	2	0.99	`000` Litres	487837	541733	90.1
i) Petrol (LPG)			`000` Litres	13189	15624	84.4
ii) J.P.			`000` Litres	35480	41417	85.7
iii) White Kerosene			`000` Litres	2502	3139	79.7
iv) H.S. Diesel			`000` Litres	212076	227264	93.3
v) Diesel Fuel			`000` Litres	0	0	
vi) Furnace Fuel			`000` Litres	102118	140624	72.6
vii) Solvent Oil			`000` Litres	0	0	
viii) Lubricating Oil			`000` Litres	0	0	
ix) Bitumen 80/100			`000` Litres	6685	7785	85.9
x) Blown Bitumen Products			`000` Litres	0	0	
xi) Premium M.G.			`000` Litres	115787	105880	109.4
xii) Naphtha			`000` Litres	0	0	
VII Non-Metalic & Mineral	21					
1 Glass Sheets	9	0.19	M.Tons	25110	24568	102.2
2 Cement	12	3.91	M.Tons	1548970	1988018	77.9
VIII Engineering Products	459					
1 Steel Bars/ Angles	41	1.06	M.Tons	23650	24302	97.3
2 Fabricated Metal Products/HMC	1	0.53	M.Tons	16	18	88.9
3 Tractors	4	0.86	Nos.	2141	1254	170.7
4 Automobiles Cars/Trucks	1	1.65	Nos.	540	517	104.4
5 Diesel Engines	15	0.06	Nos.	152	155	98.1
6 Motor Cycles	17	0.13	Nos.	92167	95102	96.9
7 Bicycles	3	0.15	Nos.	11915	11809	100.9
8 Electric Fans	126	0.11	Nos.	182919	168992	108.2
i) Ceiling				102917	99916	103.0
ii) Pedestal				24134	23022	104.8
iii) Others				55868	46054	121.3
9 Electric Transformers	3	0.00	Nos.	1900	2202	86.3
10 Electric Motors	30	0.52	Nos.	1470	1481	99.3
11 Switch Gears	3	0.01	Nos.	904	790	114.4
12 Washing Machines	20	0.00	Nos.	31163	33916	91.9
13 Electric Meters	4	0.19	Nos.	159494	163090	97.8
14 Air-Conditioners	5	0.14	Nos.	4519	3619	124.9
15 Refrigerators/Deep Freezers	5	0.31	Nos.	31428	31555	99.6
16 Safety Razor Blades	1	0.14	Mill. Nos.	85	87	97.7
17 Agricultural Implements	151	0.38	Nos.	1263	1265	99.8
i) Chaff Cutter	54			672	665	101.1
ii) Sugarcane Machines	35			3	4	75.0
iii) Wheat Thrashers	30			68	79	86.1
iv) Others (Misc. Imp.)	43			520	517	100.6
18 Textiles Machinery	29	0.01		57	55	103.6
i) Power Looms	20		Nos.	53	51	103.9
ii) Bobbins	5		000 Nos.	0	0	
iii) Shuttles	6		000 Nos.	4	4	100.0
General Index	2041	72.14		163.6	214.3	76.3

Table 3: Production Volume of Selected Items Pertaining to Large-Scale Manufacturing Sector, April 2023 VS April 2022

Group/Items	No. of Units Covered in April:2023	Weight with 2005-06 base	Unit of Quantity	Production		Index of Production in April:2023 with April: 2022
				April: 2023	April: 2022	
I Food Drinks & Tobacco	910					
1 Vegetable Ghee/Cooking Oil	44	5.00	M.Tons	100788	91028	110.7
i) Vegetable Ghee	44		M.Tons	81823	74110	110.4
ii) Cooking Oil	18		M.Tons	18965	16918	112.1
2 Dairy Products	8	4.13				101.1
i) Process/UHT Milk		1.62	`000` Litres	37956	39351	96.5
ii) Milk Powder		0.87	M.Tons	1231	1305	94.3
iii) Chees		0.01	M.Tons	931	870	107.0
iv) Butter/ Desi Ghee		0.33	M.Tons	465	445	104.5
v) Cream		1.04	M.Tons	881	637	138.3
vi) Yoghurt		0.26	M.Tons	0	0	
3 Wheat Milling	776	1.25	M.Tons	817788	870571	93.9
4 Sugar	44	3.77	M.Tons	0	215852	
5 Tea (Blended)	3	0.03	M.Tons	6780	8626	78.6
6 Starch & its Products	2	0.56	M.Tons	36275	35921	101.0
i) Starch			M.Tons	21605	21496	100.5
ii) Glucose			M.Tons	14670	14425	101.7
7 Soft Drinks & Juices	30	0.82	`000` Litres	243376	266507	91.3
i) 7-up Coca Cola etc.	17		`000` Litres	221576	244033	90.8
ii) Fruit Juices	16		`000` Litres	20878	19299	108.2
iii) Syrups & Squashes	2		`000` Litres	922	3175	29.0
8 Cigarettes	3	0.59	M. Nos	1252	1426	87.8
II Textiles	312					
1 Cotton Textiles	285					
i) Cotton/M. M Blended Yarn	247	15.40	M.Tons	125221	137564	91.0
ii) Cloth/M. M Blended Cloth	48	10.20	000 Mtrs.	59236	68691	86.2
2 Woolen Textiles	21	0.52	M.Tons	599	675	88.7
i) Woolen Yarn	14		M.Tons	579	657	88.1
ii) Knitting Wool			M.Tons	0	0	
iii) Woolen & Worsted Cloth	14		M.Tons	20	18	111.1
iv) Carpets	5	0.77	000 Mtrs.	0	0	
3 Jute Textiles	6	0.28	M.Tons	5095	5066	100.6
i) Jute Sacking				3844	3209	119.8
ii) Jute Hessian				925	1305	70.9
iii) Jute Twine				326	552	59.1
III Leather Rubber & Plastic Products	147					
1 Leather Tanning	106					
i) Upper Leather	95	0.49	000 Sq. Mtrs.	716	791	90.5
ii) Sole Leather	11		M.Tons	16	16	100.0
2 Footwear	41	0.90	000 Pairs	2653	2496	106.3
IV Ply Wood	6	0.44	000 Sq. Feet	526	583	90.2
V Paper & Paper Board	47	4.19	M.Tons	46276	59480	77.8
1 Paper				18012	16900	106.6
i) Writing			M.Tons	8285	8099	102.3
ii) Printing			M.Tons	4631	3402	136.1
iii) Packing & Others			M.Tons	5096	5399	94.4
2 Paper Board			M.Tons	28264	42580	66.4
VI Chemical & Petroleum Products	139					
1 Pharmaceuticals	36	1.15				119.2
i) Tablets	28	0.38	000 Nos.	278114	273023	101.9
ii) Liquids (Syrups & Drops)	27	0.48	000 Ltrs.	1864	1258	148.2
iii) Capsules	19	0.08	000 Nos.	42917	45194	95.0
iv) Injections	12	0.14	000 Nos.	14912	16638	89.6
v) Ointments	7	0.03	Kgs.	53160	38510	138.0
vi) Galenicals	6	0.04	000 Ltrs.	3	4	75.0
2 Basic Inorganic Chemicals/Acids	8	1.34		108013	104117	103.7
i) Caustic Soda	2		M.Tons	24412	16759	145.7
ii) Hydrochloric Acid	2		M.Tons	46015	33610	136.9
iii) Chlorine Liquids	2		M.Tons	1698	949	178.9
iv) Soda Ash	2		M.Tons	33139	43372	76.4
v) Sulphuric Acid	5		M.Tons	2749	9427	29.2

Group/Items	No. of Units Covered in April:2023	Weight with 2005-06 base	Unit of Quantity	Production		Index of Production in April:2023 with April: 2022
				April: 2023	April: 2022	
3 Fertilizers	7	7.18	M.Tons	435465	441843	98.6
i) Urea	4		M.Tons	299647	294483	101.8
ii) Amm. Nitrate	1		M.Tons	74016	72051	102.7
iii) Amm. Sulphate	0		M.Tons	0	0	
iv) Super Phosphate	1		M.Tons	0	1072	
v) Nitro Phosphate	1		M.Tons	61802	74237	83.2
4 Paints & Varnishes	12	0.65		9323	9917	94.0
i) Paints		0.01	M.Tons	6509	7177	90.7
			`000` Litres	2785	2711	102.7
ii) Varnishes		1.04	M.Tons	16	16	100.0
		0.26	`000` Litres	13	13	100.0
5 Tyres & Tubes	6	0.12	`000` Nos.	3231	3221	100.3
i) Cycle Tyres				336	335	100.3
ii) Automobile Tyres				442	431	102.6
iii) CycleTubes				590	610	96.7
iv) Automobile Tubes				1863	1845	101.0
6 Soap	62	0.07	M.Tons	20721	22154	93.5
i) Toilet Soap	7			3465	3668	94.5
ii) Washing Soap	62			17256	18486	93.3
7 Matches	2	0.00	M. Box * 40 Sticks	611	418	146.2
8 Synthetic Fibre	4	0.95	M.Tons	42685	46088	92.6
9 Petroleum Products	2	0.99	`000` Litres	487837	487932	100.0
i) Petrol (LPG)			`000` Litres	13189	13187	100.0
ii) J.P.			`000` Litres	35480	35379	100.3
iii) White Kerosene			`000` Litres	2502	2494	100.3
iv) H.S. Diesel			`000` Litres	212076	212036	100.0
v) Diesel Fuel			`000` Litres	0	984	
vi) Furnace Fuel			`000` Litres	102118	101112	101.0
vii) Solvent Oil			`000` Litres	0	0	
viii) Lubricating Oil			`000` Litres	0	0	
ix) Bitumen 80/100			`000` Litres	6685	4899	136.5
x) Blown Bitumen Products			`000` Litres	0	0	
xi) Premium M.G.			`000` Litres	115787	117841	98.3
xii) Naphtha			`000` Litres	0	0	
VII Non-Metalic & Mineral	21					
1 Glass Sheets	9	0.19	M.Tons	25110	12983	193.4
2 Cement	12	3.91	M.Tons	1548970	2013261	76.9
VIII Engineering Products	459					
1 Steel Bars/ Angles	41	1.06	M.Tons	23650	27009	87.6
2 Fabricated Metal Products/HMC	1	0.53	M.Tons	16	44	36.4
3 Tractors	4	0.86	Nos.	2141	4704	45.5
4 Automobiles Cars/Trucks	1	1.65	Nos.	540	2009	26.9
5 Diesel Engines	15	0.06	Nos.	152	320	47.5
6 Motor Cycles	17	0.13	Nos.	92167	154952	59.5
7 Bicycles	3	0.15	Nos.	11915	12304	96.8
8 Electric Fans	126	0.11	Nos.	182919	221120	82.7
i) Ceiling				102917	131167	78.5
ii) Pedestal				24134	42114	57.3
iii) Others				55868	47839	116.8
9 Electric Transformers	3	0.00	Nos.	1900	3719	51.1
10 Electric Motors	30	0.52	Nos.	1470	1886	77.9
11 Switch Gears	3	0.01	Nos.	904	1134	79.7
12 Washing Machines	20	0.00	Nos.	31163	43608	71.5
13 Electric Meters	4	0.19	Nos.	159494	196078	81.3
14 Air-Conditioners	5	0.14	Nos.	4519	21000	21.5
15 Refrigerators/Deep Freezers	5	0.31	Nos.	31428	64784	48.5
16 Safety Razor Blades	1	0.14	Mill. Nos.	85	98	86.7
17 Agricultural Implements	151	0.38	Nos.	1263	1198	105.4
i) Chaff Cutter	54			672	771	87.2
ii) Sugarcane Machines	35			3	6	50.0
iii) Wheat Thrashers	30			68	5	1360.0
iv) Others (Misc. Imp.)	43			520	416	
18 Textiles Machinery	29	0.01		57	45	126.7
i) Power Looms	20		Nos.	53	41	129.3
ii) Bobbins	5		000 Nos.	0	0	
iii) Shuttles	6		000 Nos.	4	4	100.0
General Index	2041	72.14		163.6	183.9	89.0

Table 4: Production Volume of Selected Items Pertaining to Large-Scale Manufacturing Sector, 2022-23 (Jul-April) VS 2021-2022(Jul-April):

Group/Items	No. of Units Covered in April: 2023	Weight with 2005-06 base	Unit of Quantity	Production		Index of Production in 2022-23 (Jul-April): with 2021-22 (Jul-April):=100
				2022-23 (Jul-April):	2021-22 (Jul-April):	
I Food Drinks & Tobacco	910					
1 Vegetable Ghee/Cooking Oil	44	5.00	M.Tons	968114	871792	111.0
i) Vegetable Ghee	44		M.Tons	788074	711805	110.7
ii) Cooking Oil	18		M.Tons	180040	159987	112.5
2 Dairy Products	8	4.13				107.6
i) Process/UHT Milk		1.62	`000` Litres	410135	414948	98.8
ii) Milk Powder		0.87	M.Tons	13111	8875	147.7
iii) Chees		0.01	M.Tons	8216	7345	111.9
iv) Butter/ Desi Ghee		0.33	M.Tons	4353	3519	123.7
v) Cream		1.04	M.Tons	7636	6989	109.3
vi) Yoghurt		0.26	M.Tons	0	0	
3 Wheat Milling	776	1.25	M.Tons	8187204	9398592	87.1
4 Sugar	44	3.77	M.Tons	5575980	5258131	106.0
5 Tea (Blended)	3	0.03	M.Tons	74722	78072	95.7
6 Starch & its Products	2	0.56	M.Tons	361583	343779	105.2
i) Starch			M.Tons	217576	205102	106.1
ii) Glucose			M.Tons	144007	138677	103.8
7 Soft Drinks & Juices	30	0.82	`000` Litres	1974276	1878692	105.1
i) 7-up Coca Cola etc.	17		`000` Litres	1766084	1692898	104.3
ii) Fruit Juices	16		`000` Litres	184390	165236	111.6
iii) Syrups & Squashes	2		`000` Litres	23802	20558	115.8
8 Cigarettes	3	0.59	M. Nos	13836	16076	86.1
II Textiles	312					
1 Cotton Textiles	285					
i) Cotton/M. M Blended Yarn	247	15.40	M.Tons	1329107	1371217	96.9
ii) Cloth/M. M Blended Cloth	48	10.20	000 Mtrs.	635989	669262	95.0
2 Woolen Textiles	21	0.52	M.Tons	6468	6105	105.9
i) Woolen Yarn	14		M.Tons	6291	5899	106.6
ii) Knitting Wool			M.Tons	0	27	
iii) Woolen & Worsted Cloth	14		M.Tons	177	179	98.9
iv) Carpets	5	0.77	000 Mtrs.	0	0	
3 Jute Textiles	6	0.28	M.Tons	45652	46795	97.6
i) Jute Sacking				31355	28592	109.7
ii) Jute Hessian				10689	11524	92.8
iii) Jute Twine				3608	6679	54.0
III Leather Rubber & Plastic Products	147					
1 Leather Tanning	106					
i) Upper Leather	95	0.49	000 Sq. Mtrs.	8022	7272	110.3
ii) Sole Leather	11		M.Tons	160	144	111.1
2 Footwear	41	0.90	000 Pairs	26705	24612	108.5
IV Ply Wood	6	0.44	000 Sq. Feet	5427	10366	52.4
V Paper & Paper Board	47	4.19	M.Tons	565674	609179	92.9
1 Paper				193694	172225	112.5
i) Writing			M.Tons	83603	79569	105.1
ii) Printing			M.Tons	55895	44113	126.7
iii) Packing & Others			M.Tons	54196	48543	111.6
2 Paper Board			M.Tons	371980	436954	85.1
VI Chemical & Petroleum Products	139					
1 Pharmaceuticals	36	1.15				109.8
i) Tablets	28	0.38	000 Nos.	2642977	2762885	95.7
ii) Liquids (Syrups & Drops)	27	0.48	000 Ltrs.	15679	12576	124.7
iii) Capsules	19	0.08	000 Nos.	428044	410801	104.2
iv) Injections	12	0.14	000 Nos.	157796	146878	107.4
v) Ointments	7	0.03	Kgs.	542236	417620	129.8
vi) Galenicals	6	0.04	000 Ltrs.	31	45	68.9
2 Basic Inorganic Chemicals/Acids	8	1.34		1124135	1123330	100.1
i) Caustic Soda	2		M.Tons	235328	203774	115.5
ii) Hydrochloric Acid	2		M.Tons	437472	409005	107.0
iii) Chlorine Liquids	2		M.Tons	17550	15273	114.9
iv) Soda Ash	2		M.Tons	406160	429708	94.5
v) Sulphuric Acid	5		M.Tons	27625	65570	42.1

Group/Items	No. of Units Covered in April: 2023	Weight with 2005-06 base	Unit of Quantity	Production		Index of Production in 2022-23 (Jul-April): with 2021-22 (Jul-April):=100
				2022-23 (Jul-April):	2021-22 (Jul-April):	
3 Fertilizers	7	7.18	M.Tons	4036517	4209243	95.9
i) Urea	4		M.Tons	2722553	2804791	97.1
ii) Amm. Nitrate	1		M.Tons	670233	685760	97.7
iii) Amm. Sulphate	0		M.Tons	0	0	
iv) Super Phosphate	1		M.Tons	6884	24370	28.2
v) Nitro Phosphate	1		M.Tons	636847	694322	91.7
4 Paints & Varnishes	12	0.65		96990	97543	99.4
i) Paints		0.01	M.Tons	69247	70591	98.1
			`000` Litres	27453	26658	103.0
ii) Varnishes		1.04	M.Tons	160	132	121.2
		0.26	`000` Litres	130	162	80.2
5 Tyres & Tubes	6	0.12	`000` Nos.	32035	31597	101.4
i) Cycle Tyres				3291	3164	104.0
ii) Automobile Tyres				4298	4251	101.1
iii) Cycle Tubes				5986	5791	103.4
iv) Automobile Tubes				18460	18391	100.4
6 Soap	62	0.07	M.Tons	214260	220016	97.4
i) Toilet Soap	7			33815	36006	93.9
ii) Washing Soap	62			180445	184010	98.1
7 Matches	2	0.00	M. Box * 40 Sticks	5651	3953	143.0
8 Synthetic Fibre	4	0.95	M.Tons	442523	427278	103.6
9 Petroleum Products	2	0.99	`000` Litres	5158588	5884754	87.7
i) Petrol (LPG)			`000` Litres	137758	150125	91.8
ii) J.P.			`000` Litres	332894	364720	91.3
iii) White Kerosene			`000` Litres	54495	63228	86.2
iv) H.S. Diesel			`000` Litres	2020093	2407742	83.9
v) Diesel Fuel			`000` Litres	4517	7622	59.3
vi) Furnace Fuel			`000` Litres	1268537	1180959	107.4
vii) Solvent Oil			`000` Litres	0	0	
viii) Lubricating Oil			`000` Litres	0	0	
ix) Bitumen 80/100			`000` Litres	76592	51173	149.7
x) Blown Bitumen Products			`000` Litres	0	0	
xi) Premium M.G.			`000` Litres	1263702	1659185	76.2
xii) Naphtha			`000` Litres	0	0	
VII Non-Metalic & Mineral	21					
1 Glass Sheets	9	0.19	M.Tons	238633	103308	231.0
2 Cement	12	3.91	M.Tons	18792813	21112670	89.0
VIII Engineering Products	459					
1 Steel Bars/ Angles	41	1.06	M.Tons	244886	258680	94.7
2 Fabricated Metal Products/HMC	1	0.53	M.Tons	275	426	64.6
3 Tractors	4	0.86	Nos.	20342	34576	58.8
4 Automobiles Cars/Trucks	1	1.65	Nos.	7001	20685	33.8
5 Diesel Engines	15	0.06	Nos.	1834	1491	123.0
6 Motor Cycles	17	0.13	Nos.	1044387	1508578	69.2
7 Bicycles	3	0.15	Nos.	122548	115546	106.1
8 Electric Fans	126	0.11	Nos.	1756540	2055433	85.5
i) Ceiling				1027824	1253493	82.0
ii) Pedestal				277388	366088	75.8
iii) Others				451328	435852	103.6
9 Electric Transformers	3	0.00	Nos.	27465	27443	100.1
10 Electric Motors	30	0.52	Nos.	15873	19176	82.8
11 Switch Gears	3	0.01	Nos.	9199	11028	83.4
12 Washing Machines	20	0.00	Nos.	343300	511284	67.1
13 Electric Meters	4	0.19	Nos.	1709618	1667623	102.5
14 Air-Conditioners	5	0.14	Nos.	76708	131671	58.3
15 Refrigerators/Deep Freezers	5	0.31	Nos.	360179	552958	65.1
16 Safety Razor Blades	1	0.14	Mill. Nos.	874	977	89.5
17 Agricultural Implements	151	0.38	Nos.	11942	12745	93.7
i) Chaff Cutter	54			6963	8279	84.1
ii) Sugarcane Machines	35			37	72	51.4
iii) Wheat Thrashers	30			208	203	102.5
iv) Others (Misc. Imp.)	43			4734	4191	113.0
18 Textiles Machinery	29	0.01		488	430	113.5
i) Power Looms	20		Nos.	448	390	114.9
ii) Bobbins	5		000 Nos.	0	0	
iii) Shuttles	6		000 Nos.	40	40	100.0
General Index*	2041	72.14		188.8	192.5	98.0

* Average Index of Ten months.

Table 5: Total Employment Regarding Large-Scale Industries, March-2023, April-2023 and April-2022

Groups/Items	No. of Units Covered in April: 2023	Mar: 2023	Apr: 2023	Apr: 2022	Index of Employment	
					Apr: 2023 with Mar: 2023	Apr: 2023 with Apr: 2022
I Food Drinks & Tobacco	910					
1 Vegetable Ghee/Cooking Oil	44	5823	5848	5425	100.4	107.8
2 Dairy Products	8	2125	2137	2081	100.6	102.7
3 Wheat Milling	776	9905	9908	10087	100.0	98.2
4 Sugar	44	35814	29641	28784	82.8	103.0
5 Tea (Blended)	3	1366	1264	1377	92.5	91.8
6 Starch & its Products	2	1839	1839	1829	100.0	100.5
7 Soft Drinks & Juices	30	8359	8350	8433	99.9	99.0
8 Cigarettes	3	588	581	645	98.8	90.1
II Textiles	313					
1 Cotton Textiles	285	144508	144580	158796	100.0	91.0
2 Woolen Textiles	21	926	901	1013	97.3	88.9
3 Jute Textiles	7	4934	4924	5095	99.8	96.6
III Leather Rubber & Plastic Products	147					
1 Leather Tanning	106	2205	2211	2155	100.3	102.6
2 Footwear	41	12454	12452	11957	100.0	104.1
IV Plywood	6	86	86	86	100.0	100.0
V Paper & Paper Board	47					
1 Paper & Paper Board	47	5116	5111	5021	99.9	101.8
VI Chemicals & Petroleum Products	139					
1 Pharmaceuticals	36	8033	8028	8114	99.9	98.9
2 Basic Inorganic Chemicals	8	2180	2193	2210	100.6	99.2
3 Fertilizers	7	5391	5376	5581	99.7	96.3
4 Paints & Varnishes	12	2371	2366	2353	99.8	100.6
5 Tyres & Tubes	6	1322	1332	1335	100.8	99.8
6 Soap	62	2978	2993	2832	100.5	105.7
7 Matches	2	500	496	495	99.2	100.2
8 Synthetic Fibre	4	1776	1776	1776	100.0	100.0
9 Petroleum Products	2	923	925	822	100.2	112.5
VII Non-Metallic & Mineral Products	21					
1 Glass Sheets	9	1155	1160	811	100.4	143.0
2 Cement	12	7322	7296	7705	99.6	94.7
VIII Engineering Products	458					
1 Steel Bars/ Angles	40	1097	1090	1082	99.4	100.7
2 Fabricated Metal Products/HMC	1	16	16	16	100.0	100.0
3 Tractors	4	430	430	500	100.0	86.0
4 Automobile Cars/Trucks	1	700	700	1150	100.0	60.9
5 Diesel Engines	15	24	24	24	100.0	100.0
6 Motor Cycles	17	3207	3200	3320	99.8	96.4
7 Bicycles	3	686	686	686	100.0	100.0
8 Electric Fans	126	2040	2060	2186	101.0	94.2
9 Electric Transformers	3	2680	2680	2680	100.0	100.0
10 Electric Motors	30	166	164	199	98.8	82.4
11 Electric Meters	4	1200	1200	1200	100.0	100.0
12 Switch Gears	3	12	12	12	100.0	100.0
13 Washing Machines	20	265	265	291	100.0	91.1
15 Air-Conditioners/Refrigerators/Deep Freezers	10	2153	2153	2153	100.0	100.0
16 Safety Razor Blades	1	701	701	745	100.0	94.1
17 Agricultural Implements	151	468	470	405	100.4	116.0
18 Textiles Machinery	29	74	72	79	97.3	91.1
Total	2041	285918	279697	293546	97.8	95.3

Table 6: Total Number of Production Workers Regarding Large-Scale Industries, April-2023, March-2023 and April-2022

Groups/Items		No. of Units Covered in April: 2023	Mar: 2023	Apr: 2023	Apr: 2022	Index of Employment	
						Apr: 2023 with Mar: 2023	Apr: 2023 with Apr: 2022
I	Food Drinks & Tobacco	910					
1	Vegetable Ghee/Cooking Oil	44	3596	3611	3355	100.4	107.6
2	Dairy Products	8	1379	1390	1316	100.8	105.6
3	Wheat Milling	776	6056	6037	6172	99.7	97.8
4	Sugar	44	23998	17642	17373	73.5	101.5
5	Tea (Blended)	3	1052	950	1054	90.3	90.1
6	Starch & its Products	2	1690	1690	1684	100.0	100.4
7	Soft Drinks & Juices	30	4332	4304	4449	99.4	96.7
8	Cigarettes	3	358	389	507	108.7	76.7
II	Textiles	313					
1	Cotton Textiles	285	120555	121186	133173	100.5	91.0
2	Woolen Textiles	21	720	704	751	97.8	93.7
3	Jute Textiles	7	4524	4513	4669	99.8	96.7
III	Leather Rubber & Plastic Products	147					
1	Leather Tanning	106	1592	1599	1564	100.4	102.2
2	Footwear	41	9339	9337	9190	100.0	101.6
IV	Plywood	6	70	70	70	100.0	100.0
V	Paper & Paper Board	47					
1	Paper & Paper Board	47	3687	3679	3585	99.8	102.6
VI	Chemicals & Petroleum Products	139					
1	Pharmaceuticals	36	3260	3256	3321	99.9	98.0
2	Basic Inorganic Chemicals	8	1355	1467	1386	108.3	105.8
3	Fertilizers	7	3403	3395	3708	99.8	91.6
4	Paints & Varnishes	12	1336	1333	1201	99.8	111.0
5	Tyres & Tubes	6	1024	1027	1039	100.3	98.8
6	Soap	62	2391	2399	2253	100.3	106.5
7	Matches	2	460	456	438	99.1	104.1
8	Synthetic Fibre	4	1472	1472	1471	100.0	100.1
9	Petroleum Products	2	500	475	436	95.0	108.9
VII	Non-Metallic & Mineral Products	21					
1	Glass Sheets	9	840	850	596	101.2	142.6
2	Cement	12	4305	4533	5002	105.3	90.6
VIII	Engineering Products	458					
1	Steel Bars/ Angles	40	807	802	782	99.4	102.6
2	Fabricated Metal Products/HMC	1	11	11	11	100.0	100.0
3	Tractors	4	315	315	366	100.0	86.1
4	Automobile Cars/Trucks	1	470	470	860	100.0	54.7
5	Diesel Engines	15	16	16	16	100.0	100.0
6	Motor Cycles	17	2400	2400	2424	100.0	99.0
7	Bicycles	3	527	527	527	100.0	100.0
8	Electric Fans	126	1802	1840	1877	102.1	98.0
9	Electric Transformers	3	1980	1980	1980	100.0	100.0
10	Electric Motors	30	140	140	157	100.0	89.2
11	Electric Meters	4	955	955	955	100.0	100.0
12	Switch Gears	3	10	10	10	100.0	100.0
13	Washing Machines	20	192	193	219	100.5	88.1
15	Air-Conditioners/Refrigerators/Deep Freezers	10	1845	1845	1845	100.0	100.0
16	Safety Razor Blades	1	552	552	591	100.0	93.4
17	Agricultural Implements	151	353	355	324	100.6	109.6
18	Textiles Machinery	29	62	60	70	96.8	85.7
Total		2041	215731	210235	222777	97.5	94.4

Table 7: Average Monthly Total Employment Regarding Large-Scale Industries, 2022-23 (Jul-Apr): VS 2021-22 (Jul-Apr):

Groups/Items		No. of Units Covered in April: 2023	2022-23 (Jul-Apr):	2021-22 (Jul-Apr):	2022-23 (Jul-Apr) with 2021-22(Jul-Apr):
I	Food Drinks & Tobacco	910			
1	Vegetable Ghee/Cooking Oil	44	5617	5293	106.1
2	Dairy Products	8	2056	2282	90.1
3	Wheat Milling	776	10020	10084	99.4
4	Sugar	44	28746	29916	96.1
5	Tea (Blended)	3	1350	1393	96.9
6	Starch & its Products	2	1840	1885	97.6
7	Soft Drinks & Juices	30	8229	8115	101.4
8	Cigarettes	3	627	659	95.1
II	Textiles	313			
1	Cotton Textiles	285	152260	157010	97.0
2	Woolen Textiles	21	918	1120	81.9
3	Jute Textiles	7	5006	4960	100.9
III	Leather Rubber & Plastic Products	147			
1	Leather Tanning	106	2220	2291	96.9
2	Footwear	41	12412	11863	104.6
IV	Plywood	6	87	95	91.6
V	Paper & Paper Board	47			
1	Paper & Paper Board	47	5097	5027	101.4
VI	Chemicals & Petroleum Products	139			
1	Pharmaceuticals	36	8052	8086	99.6
2	Basic Inorganic Chemicals	8	2206	2339	94.3
3	Fertilizers	7	5494	5567	98.7
4	Paints & Varnishes	12	2358	2305	102.3
5	Tyres & Tubes	6	1331	1317	101.1
6	Soap	62	2907	2851	101.9
7	Matches	2	496	464	106.9
8	Synthetic Fibre	4	1776	1776	100.0
9	Petroleum Products	2	956	961	99.5
VII	Non-Metallic & Mineral Products	21			
1	Glass Sheets	9	1151	633	181.9
2	Cement	12	7419	8049	92.2
VIII	Engineering Products	458			
1	Steel Bars/ Angles	40	1092	1078	101.3
2	Fabricated Metal Products/HMC	1	16	16	99.4
3	Tractors	4	461	500	92.3
4	Automobile Cars/Trucks	1	825	1150	71.7
5	Diesel Engines	15	24	21	112.7
6	Motor Cycles	17	3255	3204	101.6
7	Bicycles	3	686	686	100.0
8	Electric Fans	126	2091	2122	98.6
9	Electric Transformers	3	2680	2680	100.0
10	Electric Motors	30	177	202	87.9
11	Electric Meters	4	1200	1200	100.0
12	Switch Gears	3	12	12	100.0
13	Washing Machines	20	272	296	91.8
15	Air-Conditioners/Refrigerators/Dec	10	2153	2153	100.0
16	Safety Razor Blades	1	723	745	97.0
17	Agricultural Implements	151	435	417	104.3
18	Textiles Machinery	29	75	78	96.3
Total		2041	286805	292899	97.9

Table 8: Average Monthly Number of Production Workers Regarding Large-Scale Industries,2022-23 (Jul-Apr): VS 2021-22 (Jul-Apr):

Groups/Items		No. of Units Covered in April: 2023	2022-23 (Jul-Apr):	2021-22 (Jul-Apr):	2022-23 (Jul-Apr) with 2021-22(Jul-Apr):
I	Food Drinks & Tobacco	910			
1	Vegetable Ghee/Cooking Oil	44	3433	3277	104.8
2	Dairy Products	8	1306	1367	95.6
3	Wheat Milling	776	6075	6164	98.5
4	Sugar	44	18464	18836	98.0
5	Tea (Blended)	3	1036	1074	96.5
6	Starch & its Products	2	1693	1743	97.2
7	Soft Drinks & Juices	30	4257	4159	102.3
8	Cigarettes	3	417	503	83.0
II	Textiles	313			
1	Cotton Textiles	285	127489	131948	96.6
2	Woolen Textiles	21	722	841	85.8
3	Jute Textiles	7	4581	4579	100.0
III	Leather Rubber & Plastic Products	147			
1	Leather Tanning	106	1617	1602	101.0
2	Footwear	41	9371	9103	102.9
IV	Plywood	6	71	74	95.0
V	Paper & Paper Board	47			
1	Paper & Paper Board	47	3644	3601	101.2
VI	Chemicals & Petroleum Products	139			
1	Pharmaceuticals	36	3290	3316	99.2
2	Basic Inorganic Chemicals	8	1387	1607	86.3
3	Fertilizers	7	3540	3645	97.1
4	Paints & Varnishes	12	1271	995	127.7
5	Tyres & Tubes	6	1040	1021	101.9
6	Soap	62	2309	2246	102.8
7	Matches	2	451	407	110.8
8	Synthetic Fibre	4	1472	1471	100.1
9	Petroleum Products	2	490	468	104.7
VII	Non-Metallic & Mineral Products	21			
1	Glass Sheets	9	837	464	180.3
2	Cement	12	4515	5416	83.4
VIII	Engineering Products	458			
1	Steel Bars/ Angles	40	798	787	101.4
2	Fabricated Metal Products/HMC	1	11	11	100.0
3	Tractors	4	336	365	91.9
4	Automobile Cars/Trucks	1	553	860	64.3
5	Diesel Engines	15	16	15	106.0
6	Motor Cycles	17	2435	2296	106.0
7	Bicycles	3	527	527	100.0
8	Electric Fans	126	1831	1799	101.7
9	Electric Transformers	3	1980	1980	100.0
10	Electric Motors	30	146	157	92.9
11	Electric Meters	4	955	955	100.0
12	Switch Gears	3	10	10	100.0
13	Washing Machines	20	200	217	92.2
15	Air-Conditioners/Refrigerators/Dec	10	1845	1845	100.0
16	Safety Razor Blades	1	570	591	96.4
17	Agricultural Implements	151	343	334	102.8
18	Textiles Machinery	29	64	67	95.1
Total		2041	217393	222744	97.6

PERFORMANCE OF COTTON TEXTILE INDUSTRY

Report for the month of April 2023

Coverage

This report covers Two Hundred & Eighty Five (285) Cotton Textiles Mills, Producing yarn and cloth.

Spindles/Rotors/Looms	Installed	Average Worked	% Utilization
Spindles	8278712	6256868	75.6%
Rotors	52714	36871	69.9%
Looms	7988	5876	73.6%

MANUFACTURING ACTIVITY (APRIL 2023)

Production, Consumption and Stock of Cotton Bales

Textile mills purchased 823512 Bales of Cotton during the month, which is 5.5% lower than March 2023. These mills consumed 900460 of Cotton Bales to manufacture Yarn that is 0.01% lower than the last month. The stock of Cotton Bales at the end of the month was 4115482 Bales.

Production, Consumption and Sale of Cotton Yarn

The production of Cotton Yarn during the month was 80878 thousand kgs. Which is 1.7% higher than March 2023. The mills consumed 12703 thousand kgs. Of Cotton Yarn to manufacture Cotton Cloth, during the month, 75030 thousand kgs. Of Cotton Yarn was sold by the textile mills which was 1.8% lower than the March 2023. The Export of Cotton Yarn during the month was 9720 thousand kgs. Which was 22.6% lower than the last month.

Production and Sale of Cotton Cloth

The production of Cotton Cloth during the month was 52292 thousand Metres. Which is 0.3% lower than the last month, 71490 thousand Metres. Of Cotton Cloth was sold, out of which 14410 thousand Metres was exported by the Textile Mills during the month which was 7.6% lower than last month.

Production of Man Made/Blended Yarn and Cloth

The production of Man Made/Blended Yarn was 44343 thousand kgs. which is 0.4% lower than the last month. The production of Man Made/Blended Cloth was 6944 thousand Mtrs. which was 5.4% lower the last month.

Employment and Wages/Salaries

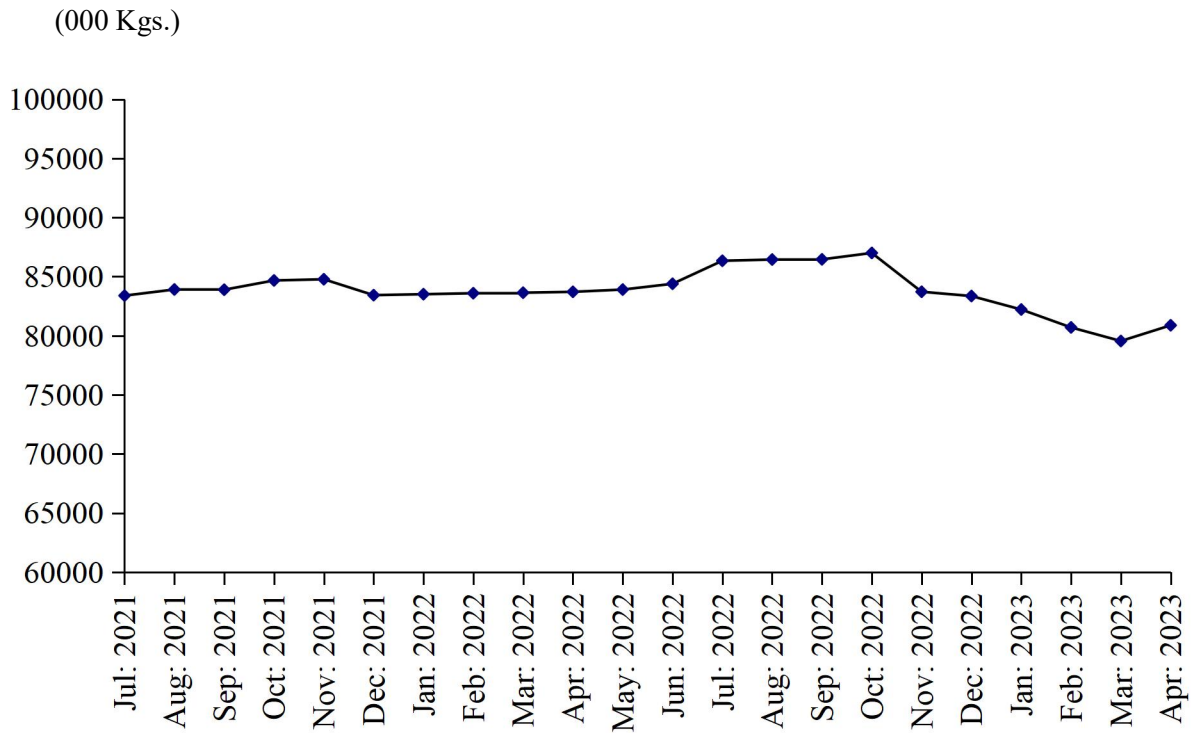
Total employment during the month was 144580 Out of this total employment, 121186 were production workers. Total wages/salaries for the month amounted to 337.4 Million Rupees.

Production of Man Made/Blended Yarn and Cloth (Since July 2022)

Month/Year	Man Made / Blended Yarn (000 Kgs.)		Man Made / Blended Cloth (000.Mtrs.)	
	2021-22	2022-23	2021-22	2022-23
<u>July- Apr:</u>	<u>532722</u>	<u>492474</u>	<u>96380</u>	<u>83826</u>
July	55304	52124	7807	9635
August	52332	51864	9990	9480
September	52108	51960	9644	9065
October	52419	52978	9699	9080
November	52985	51399	9624	8671
December	53313	51099	9966	8639
January	53432	46377	9858	7515
February	53416	45812	9916	7449
March	53559	44518	9925	7348
April	53854	44343	9951	6944
May	54181		9965	
June	54289		9995	

PRODUCTION OF COTTON YARN

July 2021 to April 2023



PRODUCTION OF COTTON CLOTH

July 2021 to April 2023

(000 Linear Mtrs.)

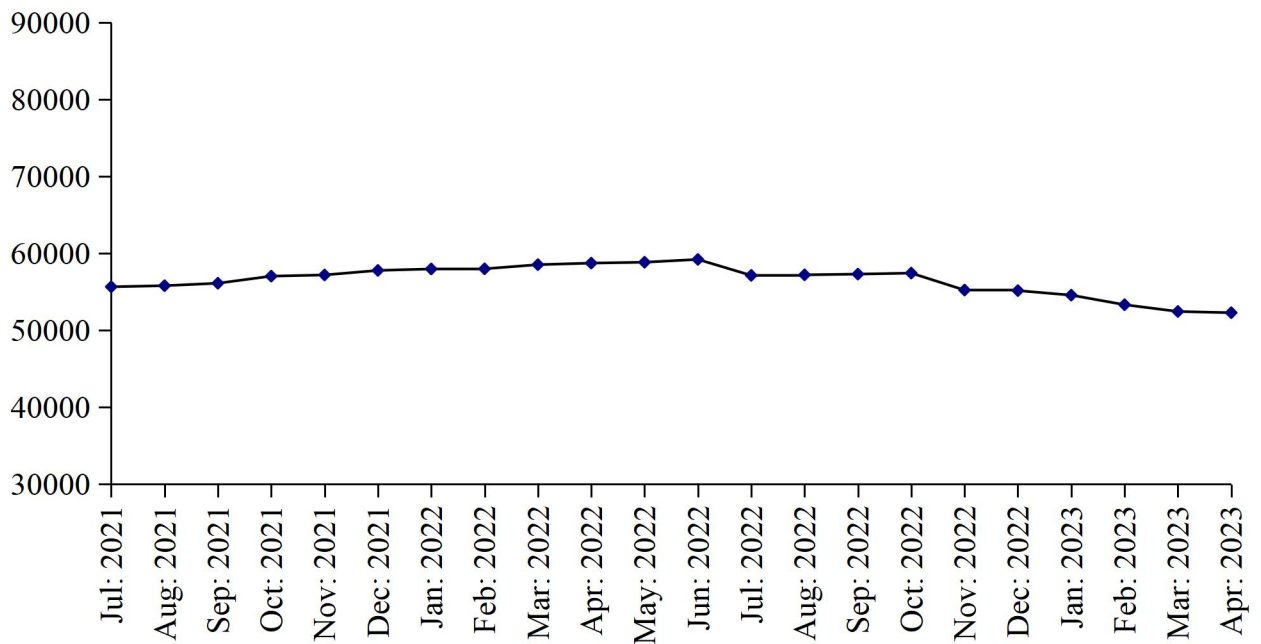


TABLE 10: DETAIL OF THE PURCHASE, SALE, CONSUMPTION AND STOCK OF COTTON BALES.

(one Bale = 170 Kg)

Year (July-June)/ Month	No. Of Reporting Mills	Purchase	Sale	Consumed for Spinning	Stock at the end of Year/Month
2006-07	268	9067493	395172	8691665	1959734
2007-08	268	8457435	451365	7987689	1978115
2008-09	268	7284896	483579	7100353	1679079
2009-10	268	8143340	505951	7889680	1426788
2010-11	274	8801855	484794	8596317	1147532
2011-12	274	8025974	387146	7286551	1499809
2012-13	277	8618084	326690	7863746	1927457
2013-14	277	8301002	434565	7838753	1955141
2014-15	277	8281619	550118	7819131	1867511
2015-16	290	7263140	330272	7085902	1714477
2016-17	290	8271104	587127	7802375	1596079
2017-18	299	8157127	412752	7459759	1880695
2018-19	299	8156763	448409	7552656	2036393
2019-20	299	6953009	399666	6319497	2270239
2020-21	285	8478928	314792	7320669	3113706
2021-22	285	11846884	1594595	9431481	3934514
(Jul: – Apr:)	<u>285</u>	<u>10006161</u>	<u>1538847</u>	<u>7351641</u>	<u>4229379</u>
Jul:	285	714986	31523	677441	3119728
Aug:	285	590918	50396	649939	3010311
Sep:	285	943166	146879	733099	3073499
Oct:	285	1602969	124703	707058	3844707
Nov:	285	1388987	29269	838596	4365829
Dec:	285	995600	291992	827294	4242143
Jan:	285	961344	211704	776955	4214828
Feb:	285	904421	217514	676888	4224847
Mar:	285	952248	219210	677308	4280577
Apr:	285	951522	215657	787063	4229379
May	285	1028216	46997	1004486	4206112
June	285	812507	8751	1075354	3934514
<u>2022-23</u>					
(Jul: – Apr:)	<u>285</u>	<u>9358599</u>	<u>215504</u>	<u>8962127</u>	<u>4115482</u>
Jul:	285	820550	5941	887827	3861296
Aug:	285	832204	6141	886409	3800950
Sep:	285	832004	6044	866238	3760672
Oct:	285	1224446	20334	912256	4052528
Nov:	285	1153844	51368	904283	4250721
Dec:	285	992031	9189	921049	4312514
Jan:	285	866527	37837	893823	4247381
Feb:	285	941554	29648	889218	4270069
Mar:	285	871927	27947	900564	4213485
Apr:	285	823512	21055	900460	4115482

TABLE 11: PRODUCTION, PURCHASE, CONSUMPTION, SALE AND STOCK OF COTTON YARN

Year (July-June)/ Month	No. of Reporting Mills	Production	Purchase	Consumed	SALE			Stock at the end of Year/ Month
					Total	Within Country	Exported	
2006-07	250	935996	155461	161905	929558	648260	281298	36643
2007-08	263	869531	182463	185558	853110	626939	226171	49969
2008-09	263	744478	138920	150092	736453	562275	174178	46822
2009-10	263	824100	93550	108458	809044	646616	162428	46970
2010-11	263	861278	86884	107441	843590	672067	171523	44101
2011-12	263	807305	83157	76949	824281	661528	162753	33333
2012-13	274	892200	116081	106323	898240	651670	246570	37051
2013-14	274	939965	129796	132378	931890	720629	211561	42544
2014-15	289	982172	132904	139454	974797	750512	224285	43369
2015-16	292	987258	139201	162386	962945	753246	209699	44497
2016-17	290	1063645	143722	153715	1056034	857310	198724	42115
2017-18	247	1082179	191064	179554	1090682	857987	232695	45122
2018-19	247	1075008	186447	178128	1082390	888248	194132	46059
2019-20	247	976627	221511	180109	997528	812952	184576	66560
2020-21	247	998181	342664	169862	1182999	991173	191826	54544
2021-22	247	1006783	252995	215857	1033312	843488	189824	65153
(Jul: – Apr:)	<u>247</u>	<u>838495</u>	<u>215143</u>	<u>177667</u>	<u>868859</u>	<u>705674</u>	<u>163185</u>	<u>61656</u>
Jul:	247	83388	25366	8227	98638	79839	18799	56433
Aug:	247	83907	23576	9282	103674	84065	19609	50960
Sep:	247	83887	20276	17841	84806	70081	14725	52476
Oct:	247	84671	20701	18511	84538	69940	14598	54799
Nov:	247	84772	21556	20848	84334	66359	17975	55945
Dec:	247	83428	20486	22634	83752	66955	16797	53473
Jan:	247	83508	20624	20603	80948	67143	13805	56054
Feb:	247	83590	20632	19968	82999	66624	16375	57309
Mar:	247	83634	20862	19901	81499	67017	14482	60405
Apr:	247	83710	21064	19852	83671	67651	16020	61656
May	247	83899	19937	19444	81609	69841	11768	64439
Jun:	247	84389	17915	18746	82844	67973	14871	65153
<u>2022-23</u>								
(Jul: – Apr:)	<u>247</u>	<u>836633</u>	<u>170485</u>	<u>168578</u>	<u>816150</u>	<u>689019</u>	<u>127131</u>	<u>87543</u>
July	247	86335	17915	18646	83465	68391	15074	67292
Aug:	247	86440	18309	18613	83078	68133	14945	70350
Sep:	247	86455	18194	18498	82345	67956	14389	74156
Oct:	247	86998	22361	20963	90334	81469	8865	72218
Nov:	247	83714	14233	16093	81358	70434	10924	72714
Dec:	247	83353	20261	16310	80147	67481	12666	79871
Jan:	247	82213	14410	16501	85804	71431	14373	74189
Feb:	247	80699	13903	15866	78162	63547	13615	74763
Mar:	247	79548	13894	14385	76427	63867	12560	77393
Apr:	247	80878	17005	12703	75030	65310	9720	87543

TABLE 12: PRODUCTION, PURCHASE, SALE AND STOCK OF COTTON CLOTH.

(000 Mtrs.)

Year (July-June)/ Month	No. Of Reporting Mills	Production	Purchased	SALE			Stock at the end of Year/ Month
				Total	Within Country	Exported	
2006-07	50	421403	93715	508661	267082	241579	56285
2007-08	52	401275	22913	410559	245425	165134	69914
2008-09	52	350406	52966	397698	207800	189898	75588
2009-10	52	369035	62330	438802	258870	179932	68151
2010-11	53	377058	27814	411759	273413	138346	61264
2011-12	53	324906	26410	354262	245679	108583	58318
2012-13	56	337955	39613	384441	227950	156491	51445
2013-14	56	414827	44459	454427	230989	223438	56304
2014-15	57	468206	33332	500905	297034	203871	56937
2015-16	57	522412	18246	542268	325894	216374	55327
2016-17	58	670884	42791	703647	431374	272273	65355
2017-18	39	703513	44908	749157	439486	309671	64619
2018-19	39	697096	38577	751178	456319	294859	49114
2019-20	39	650317	30785	658561	455655	202906	75042
2020-21	38	644439	48331	702494	513618	188876	65318
2021-22	38	690956	48439	728202	512555	215647	76511
(Jul: – Apr:)	38	572882	45318	605270	423191	182079	78248
Jul:	38	55662	12787	63374	51764	11610	70393
Aug:	38	55805	14537	71790	53582	18208	68945
Sep:	38	56124	3019	58336	42284	16052	69752
Oct:	38	57045	4417	56074	40706	15368	75140
Nov:	38	57200	4149	58292	41233	17059	78197
Dec:	38	57790	1234	63512	40608	22904	73709
Jan:	38	57978	1121	58135	37346	20789	74673
Feb:	38	57999	1427	56594	37043	19551	77505
Mar:	38	58539	1344	58767	39368	19399	78621
Apr:	38	58740	1283	60396	39257	21139	78248
May:	38	58855	1327	63388	43979	19409	75042
Jun:	38	59219	1794	59544	45385	14159	76511
<u>2022-23</u>							
(Jul: – Apr:)	38	552163	130878	667268	523534	143734	92284
Jul:	38	57145	1756	54757	40640	14117	80655
Aug:	38	57215	1826	54897	40710	14187	84799
Sep:	38	57310	1928	55094	40807	14287	88943
Oct:	38	57442	18886	67030	50674	16356	98241
Nov:	38	55235	17725	71249	56048	15201	99952
Dec:	38	55165	17125	72514	60078	12436	99728
Jan:	38	54575	18052	73521	59619	13902	98834
Feb:	38	53332	17072	71385	58141	13244	97853
Mar:	38	52452	18204	75331	59737	15594	93178
Apr:	38	52292	18304	71490	57080	14410	92284

TABLE 13: EMPLOYMENT AND WAGES/SALARIES

Year (July-June)/ Month	No. Of Reporting Mills	E M P L O Y M E N T (Nos.)*			WAGES/SALARIES (000 Rs.)		
		Total	Production Workers	Office Staff	Total	Production Workers	Office Staff
2006-07	288	183201	158112	25089	791772	620130	171642
2007-08	288	176643	152036	24607	842722	661182	181540
2008-09	288	162984	139152	23832	802438	629608	172830
2009-10	288	168727	144487	24240	944137	750701	193436
2010-11	295	166718	142756	23962	1149580	893633	255947
2011-12	295	163535	140315	23220	1171743	926744	245002
2012-13	280	169697	144411	25286	1323153	1043134	280586
2013-14	281	172129	144216	27913	1627528	1286234	341294
2014-15	289	170528	143048	27480	1734882	1372957	361925
2015-16	289	164049	135777	28272	1925533	1497525	423209
2016-17	298	165251	133259	31992	2069106	1599857	469249
2017-18	299	161727	133190	28537	2251084	1756455	494629
2018-19	299	157846	131085	26761	2438412	1891246	247166
2019-20	299	151851	126203	25648	2499773	1973563	526210
2020-21	285	154706	129886	24820	2816361	2213454	602907
2021-22	285	157343	132207	25136	3146792	2425150	721642
(Jul: – Apr:)	285	157010	131948	25062	3128119	2408860	719259
Jul:	285	154695	130621	24074	2812038	2219728	592310
Aug:	285	156003	131674	24329	3055240	2374009	681231
Sep:	285	155803	131402	24401	3096924	2394889	702035
Oct:	285	156075	131460	24615	3097145	2388151	708994
Nov:	285	156507	131457	25050	3192910	2448728	744182
Dec:	285	156748	131590	25158	3181397	2451990	729407
Jan:	285	158294	132490	25804	3180335	2441813	738522
Feb:	285	158540	132610	24930	3199488	2448892	750596
Mar:	285	158640	133007	24633	3213548	2453189	760359
Apr:	285	158796	133173	25623	3252167	2467214	784953
May	285	158989	133329	24666	3252787	2480662	772125
Jun	285	159028	133672	25356	3227523	2532533	773840
2022-23							
(Jul: – Apr:)	285	152260	127489	24771	3302776	2542642	760134
Jul:	285	159734	133921	25813	3312202	2537499	774703
Aug:	285	159579	133766	25813	3246751	2467880	778871
Sep:	285	159251	133635	25616	3231165	2457355	773810
Oct:	285	159311	133665	25646	3334720	2570476	764244
Nov:	285	150546	125553	24993	3201749	2470765	730984
Dec:	285	149936	124976	24960	3342458	2577991	764467
Jan:	285	147853	124076	23777	3331972	2577507	754465
Feb:	285	147305	123555	23750	3331919	2580691	751228
Mar:	285	144508	120555	23953	3321011	2571512	749499
Apr:	285	144580	121186	23394	3373814	2614747	759067

* = Monthly averages over the ten months.

PERFORMANCE OF WOOLLEN TEXTILE INDUSTRY

Report for the month of April 2023

Coverage

This report covers Twenty Six (21) Woollen Textile Mills of the Punjab.

Production

The Woollen Textile Mills Produced 579 thousand Kgs. of Woollen Yarn, and nil production of Knitting Wool during the month of April 2023. The production of Woollen Yarn was 2.5% higher than the last month and Knitting Wool was same as the last month respectively.

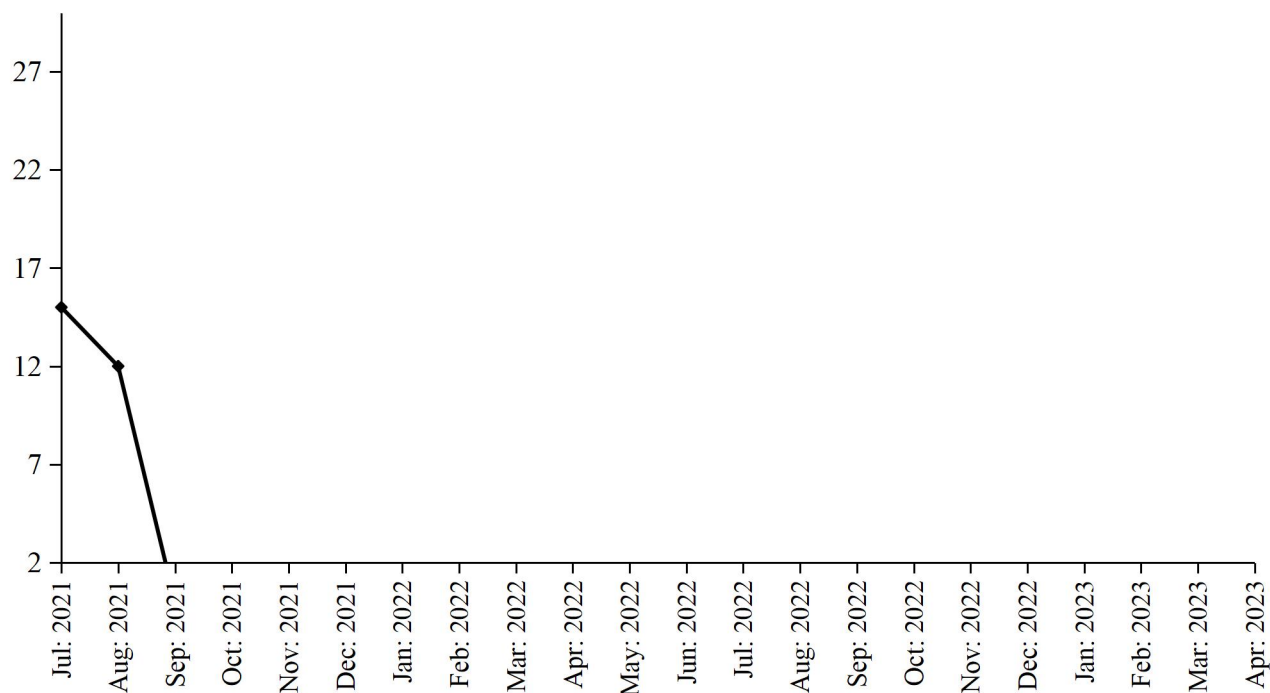
Employment

Total employment in Woollen Textile Mills during the month was 911 which was 0.8% higher than the last month. Out of this total employment, 712 were production workers.

PRODUCTION OF KNITTING WOOL

July 2021 to April 2023

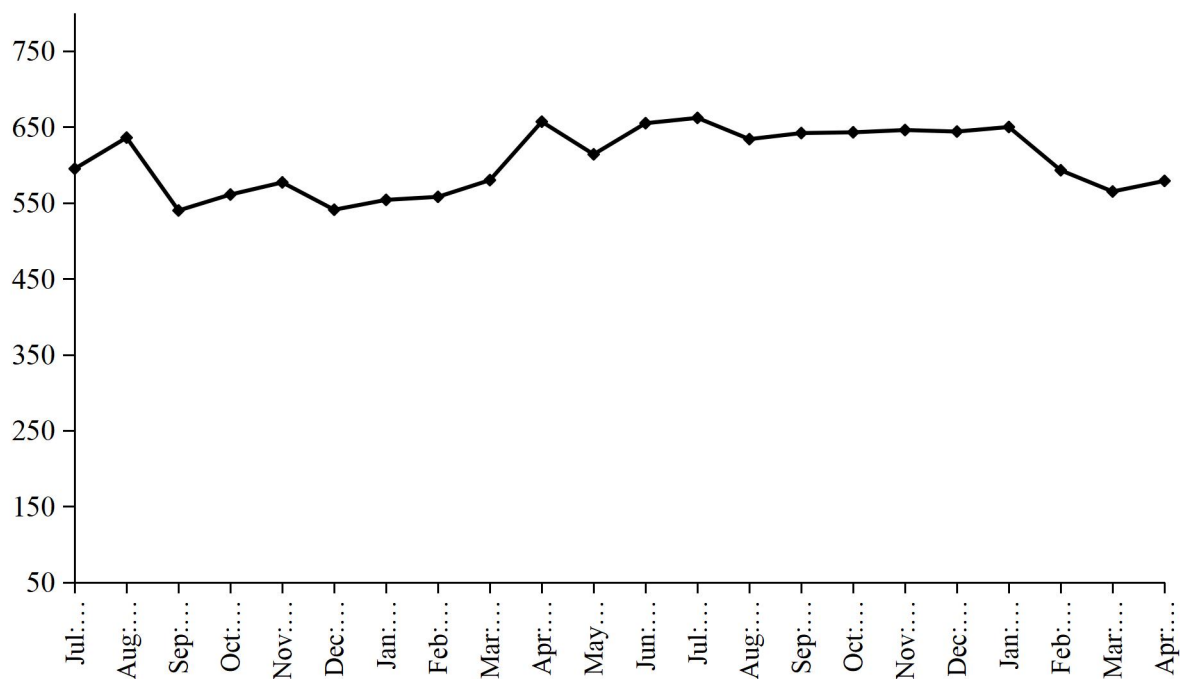
(000 Kg.)



PRODUCTION OF WOOLEN YARN

July 2021 to April 2023

(000 Kg.)



PRODUCTION OF WOOLEN WORSTED CLOTH

July 2021 to April 2023

(000 Mtrs.)

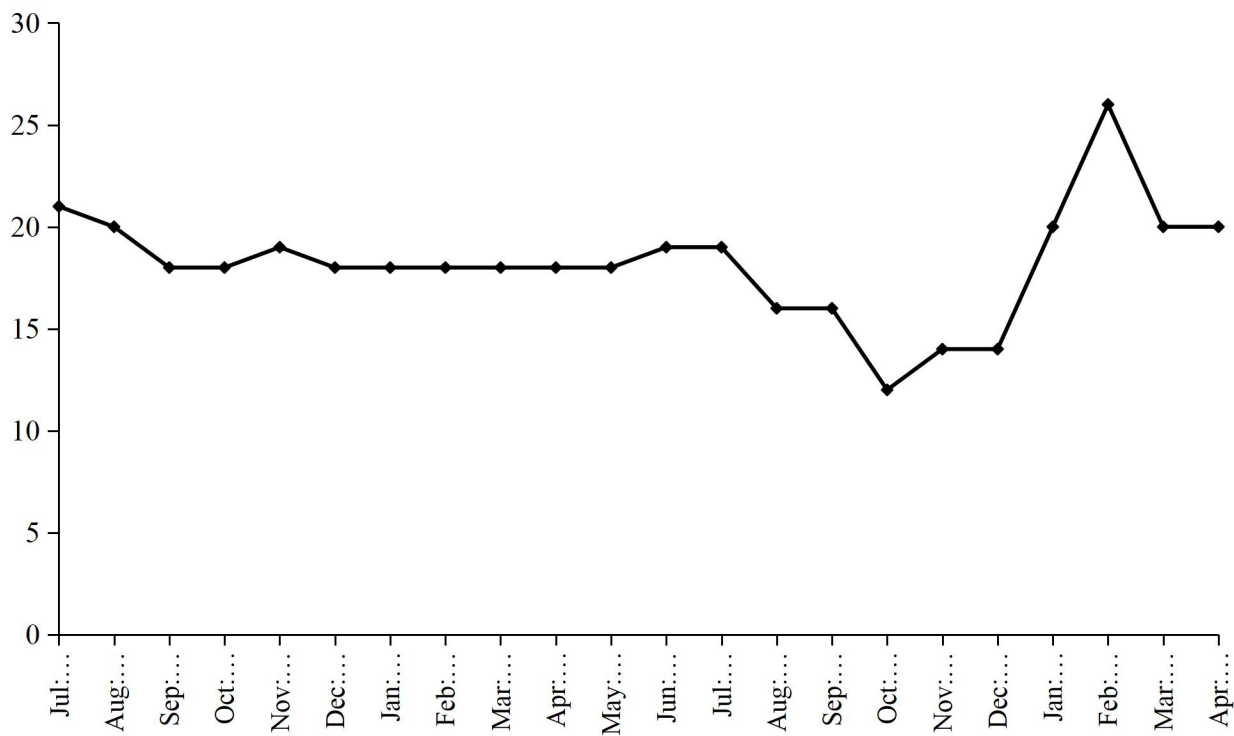


TABLE 13: MANUFACTURING ACTIVITY OF WOOLLEN INDUSTRY.

Year (July-June)/ month	No. Of Reporting Units	PRODUCTION				EMPLOYMENT (Nos.) *	
		Woollen Yarn (M.Tons)	Knitting Wool (M.Tons)	Woollen Worsted Cloth (000 Mtrs.)	Blankets (Nos.)	Total	Production Workers
2006-07	27	1056	3263	612	-	1675	1309
2007-08	27	1194	3306	819	-	1719	1401
2008-09	27	1046	2778	991	-	1787	1476
2009-10	27	1154	2565	825	-	1797	1491
2010-11	27	1037	2351	844	-	1729	1478
2011-12	27	826	2097	808	-	1680	1405
2012-13	27	740	2250	592	-	1661	1413
2013-14	27	864	1633	221	-	1410	1153
2014-15	27	1510	1805	243	-	1301	1037
2015-16	27	1334	1963	246	-	1252	998
2016-17	27	1738	1898	226	-	1318	1056
2017-18	26	2159	1673	160	-	1397	1116
2018-19	26	1918	1488	11	-	1372	1096
2019-20	25	2731	883	79	-	1318	1055
2020-21	21	7988	428	172	-	1303	1017
2021-22	21	7068	27	223	-	1096	832
(Jul: – Apr:)	<u>21</u>	<u>5799</u>	<u>27</u>	<u>186</u>	<u>=</u>	<u>1130</u>	<u>851</u>
Jul:	21	595	15	21	-	1283	999
Aug:	21	636	12	20	-	1273	989
Sep:	21	540	-	18	-	1125	854
Oct:	21	561	-	18	-	1124	853
Nov:	21	577	-	19	-	1125	854
Dec:	21	541	-	18	-	1014	749
Jan:	21	554	-	18	-	1098	800
Feb:	21	558	-	18	-	1101	808
Mar:	21	580	-	18	-	1144	854
Apr:	21	657	-	18	-	1013	751
May	21	614	-	18	-	928	736
Jun:	21	655	-	19	-	928	736
<u>2022-23</u>							
(Jul: – Apr:)	<u>21</u>	<u>6258</u>	<u>=</u>	<u>177</u>	<u>=</u>	<u>917</u>	<u>721</u>
Jul:	21	662	-	19	-	913	726
Aug:	21	634	-	16	-	913	720
Sep:	21	642	-	16	-	915	721
Oct:	21	643	-	12	-	921	725
Nov:	21	646	-	14	-	919	723
Dec:	21	644	-	14	-	919	723
Jan:	21	650	-	20	-	939	732
Feb:	21	593	-	26	-	919	723
Mar:	21	565	-	20	-	904	708
Apr:	21	579	-	20	-	911	712

* = Monthly Average over ten months.

ANNEXURE – III

PERFORMANCE OF VEGETABLE GHEE/COOKING OIL INDUSTRY

Report for the month of April 2023

Coverage

This report covers Fifty (50) Vegetable Ghee/Cooking Oil Mills of the Punjab Province.

Purchase, Consumption and Stock of Edible Oil

During the month of April 2023, about 39534 metric tons Local Oil and 32019 metric tons Imported Palm Oil was purchased by the Mills, meanwhile, about 16037 metric tons Other Oil was produced as compared to 14890 metric tons produced in the last month. The Oil intake for production of Vegetable Ghee/Cooking Oil during the month was recorded at 50962 metric tons witnessed 9.0% decrease as compared to the last month. The stock of Oil at the end of the month was closed at 83439 metric tons.

Production, Sale and Stock of Vegetable Ghee/Cooking Oil

Vegetable Ghee and Cooking Oil production in the province during the month registered 2.0% percent increase as compared to last month. The data revealed about 81823 metric tons & 18864 metric tons production of Vegetable Ghee and Cooking Oil during the month respectively. The sale of Vegetable Ghee/Cooking Oil during the month was 100687 metric tons witnessed 0.2% percent increase as compared to the last month. The stock of Vegetable Ghee/Cooking Oil closed at the end of the month at 11164 metric tons.

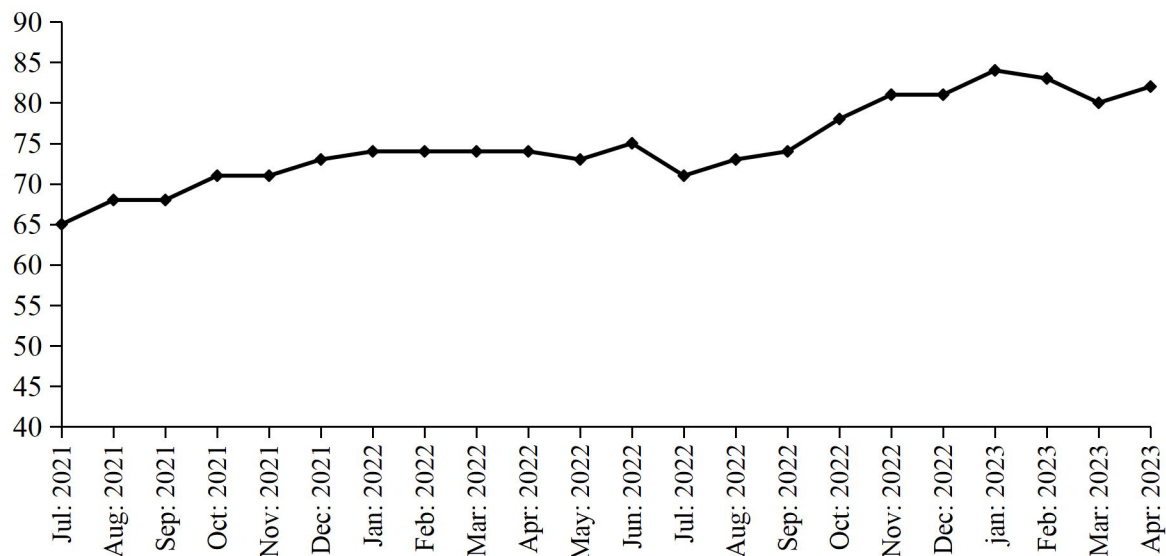
Employment and Wages/Salaries

Total employment recorded in the Mills of Vegetable Ghee/Cooking Oil during the month was 5848, 1.7% higher than the last month. Production workers was 3611 amount of Rs.132 million was paid by the Mills against total wages/salaries for the month of April 2023.

PRODUCTION OF VEGETABLE GHEE

July 2021 to April 2023

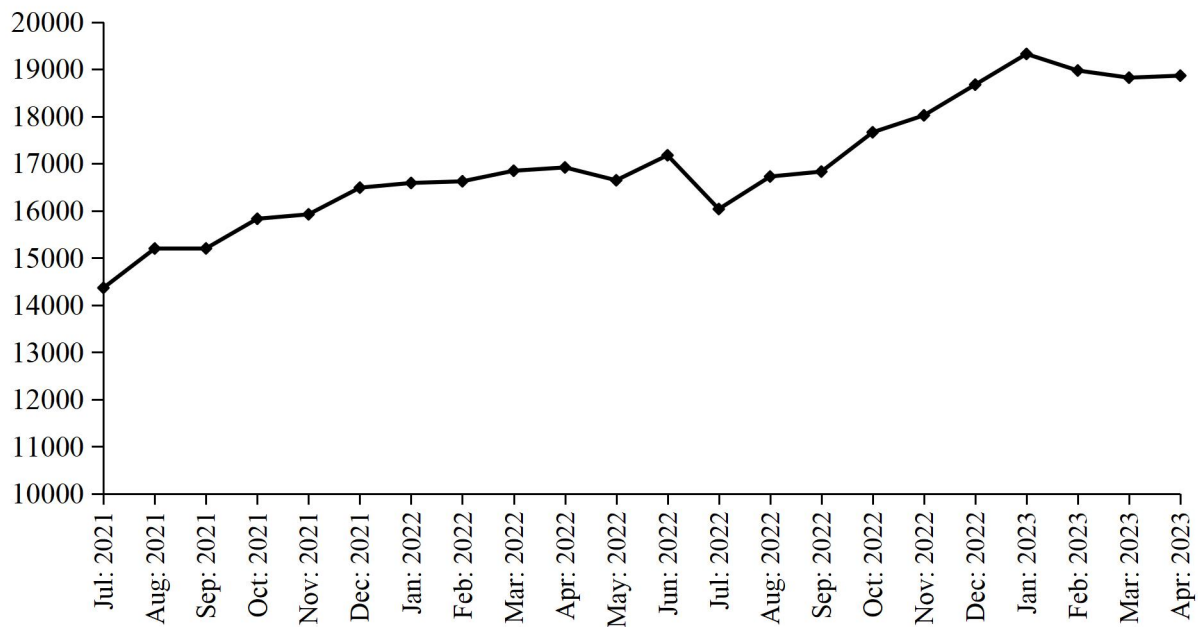
(000 M.Tons)



PRODUCTION OF COOKING OIL

July 2021 to April 2023

(000 M.Tons)



PRODUCTION OF VEGETABLE GHEE/COOKING OIL

July 2021 to April 2023

(000 M.Tons)

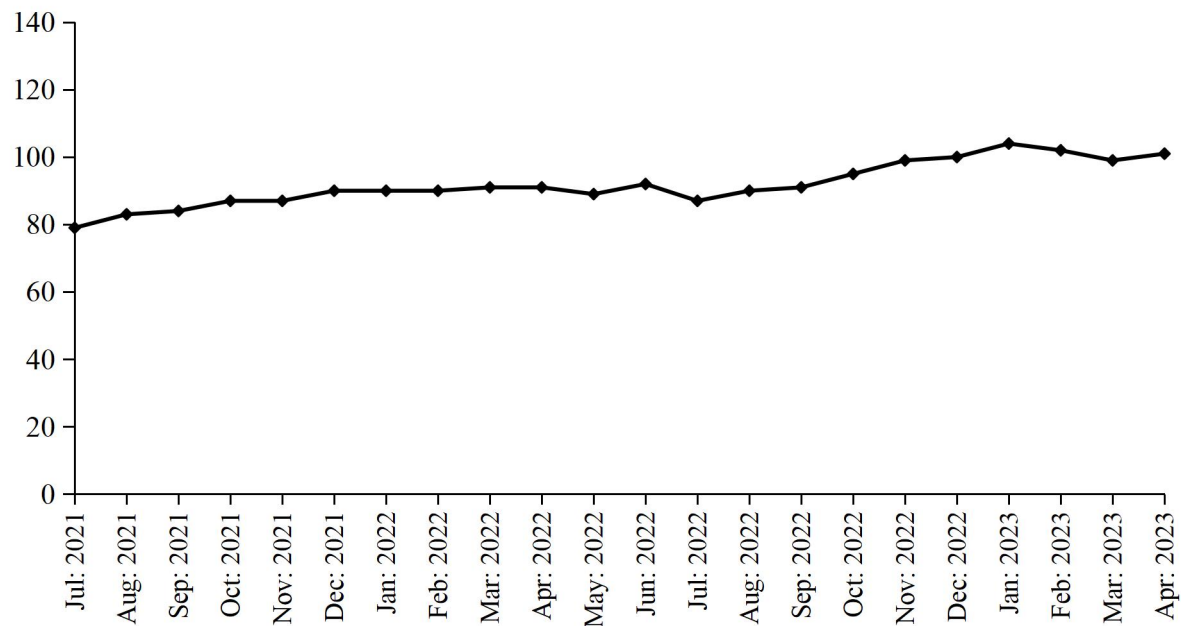


TABLE 15:DETAIL OF THE STOCK, PURCHASED, CONSUMED AND SALE OF EDIBLE OIL.

(M. Tons)

Year (July-June)/ Month	No. Of Repor- ting Mills	LOCALLY PURCHASED		PRODUCED		Impor- ted	Consumed / Sent for Refinery	Sold/ Trans- ferred	Stock at the end of Year/ Month
		Cotton Seed Oil	Other Oil	Cotton Seed Oil	Other Oil				
2006-07	54	8076	50042	-	4068	509698	576065	2730	20158
2007-08	54	-	92673	-	-	432703	530500	-	15034
2008-09	54	-	100857	-	5206	398310	487250	-	32157
2009-10	54	-	104202	-	25852	512468	615680	25090	33909
2010-11	54	327	183884	-	35675	482008	634601	77461	23741
2011-12	54	-	183112	-	34577	423778	607993	37657	19558
2012-13	54	-	229765	-	43652	431163	660016	33454	30668
2013-14	54	-	216660	-	38972	495070	696775	42965	41630
2014-15	53	-	162624	-	49151	585062	753658	50338	34471
2015-16	53	-	185823	-	44073	885878	885882	18622	40602
2016-17	50	-	220571	-	60257	633199	881071	39566	33992
2017-18	51	-	206532	-	83627	849072	1074228	60975	38020
2018-19	51	-	213910	-	92005	836051	1055742	77884	46360
2019-20	52	-	248945	-	60421	715798	921638	102073	47813
2020-21	50	-	374560	-	84020	578628	837241	176122	65658
2021-22	44	-	363623	-	137479	560354	710634	330409	86071
(Jul: – Apr:)	44	=	293021	=	120054	473135	607578	259919	84371
Jul:	44	-	25776	-	10656	44694	63009	24424	59351
Aug:	44	-	23136	-	13397	44376	60793	21168	58299
Sep:	44	-	24527	-	13735	51782	57107	23189	68047
Oct:	44	-	25936	-	14770	44265	58513	23893	70612
Nov:	44	-	28598	-	11030	44050	58333	20075	75882
Dec:	44	-	33827	-	10882	46751	65239	25231	76872
Jan:	44	-	30935	-	9883	46492	65081	28256	70845
Feb:	44	-	32027	-	11904	51043	62442	30363	73014
Mar:	44	-	31088	-	12207	50831	61334	30563	75243
Apr:	44	-	37171	-	11590	48851	55727	32757	84371
May:	44	-	37910	-	9034	45602	52011	34529	90377
Jun:	44	-	32692	-	8391	41617	51645	35361	86071
<u>2022-23</u>									
(Jul: – Apr:)	44	=	363021	=	115612	377602	394478	464389	83439
Jul:	44	-	29239	-	8594	40283	33465	44310	86412
Aug:	44	-	29250	-	8794	39983	32965	42906	88568
Sep:	44	-	29839	-	8807	40121	33750	44628	88957
Oct:	44	-	33981	-	8998	35798	34223	43241	90270
Nov:	44	-	35080	-	9982	35179	36196	37128	97187
Dec:	44	-	37569	-	10002	38372	43751	39940	99439
Jan:	44	-	43324	-	13079	37892	45401	48851	99482
Feb:	44	-	43439	-	16429	40293	42354	56435	100854
Mar:	44	-	41766	-	14890	37662	49269	55988	89915
Apr:	44	-	39534	-	16037	32019	43104	50962	83439

TABLE 16:DETAIL OFPRODUCTION, SALE AND STOCK OF VEGETABLE GHEE/COOKING OIL

(M.Tons)

Year (July-June)/ Month	No. Of Repor- ting Mills	P R O D U C T I O N			Sale	Stock At the end
		Vegetable Ghee	Cooking Oil	Total		
2006-07	54	492595	71696	564291	562729	7932
2007-08	54	438129	55186	493315	494707	6540
2008-09	54	427976	60147	488123	486544	8119
2009-10	54	519765	87487	607252	606825	8546
2010-11	54	524809	96711	621520	622978	7088
2011-12	54	507688	93151	600839	600269	7658
2012-13	54	537111	119437	656548	654031	9059
2013-14	54	533628	20248	159078	156829	10897
2014-15	53	576943	102881	679824	679487	8985
2015-16	53	641889	113708	755597	755526	9057
2016-17	50	644550	110166	754716	755306	8170
2017-18	51	786226	127257	913483	912553	9100
2018-19	51	804497	152352	956849	944020	18074
2019-20	50	880796	193901	1074697	1076905	15866
2020-21	50	860505	198332	1058837	1063974	10729
2021-22	44	859227	193809	1053036	1051023	12742
(Jul: – Apr:)	44	711805	159987	871792	870464	12057
Jul:	44	64561	14365	78926	84457	5198
Aug:	44	68008	15199	83207	78504	9901
Sep:	44	68323	15201	83524	83892	9533
Oct:	44	70951	15830	86781	86783	9531
Nov:	44	71123	15924	87047	87926	8652
Dec:	44	73132	16489	89621	88414	9859
Jan:	44	73825	16589	90414	90912	9361
Feb:	44	73864	16624	90488	90166	9683
Mar:	44	73908	16848	90756	89874	10565
Apr:	44	74110	16918	91028	89536	12057
May	44	72564	16646	89210	88979	12288
Jun:	44	74858	17176	92034	91580	12742
<u>2022-23</u>						
(Jul: – Apr:)	44	787379	179931	967310	968888	11164
Jul:	44	71360	16036	87396	87036	13102
Aug:	44	73360	16725	90085	87767	15420
Sep:	44	74112	16830	90942	91607	14755
Oct:	44	77531	17663	95194	95195	14754
Nov:	44	80545	18022	98567	97584	15737
Dec:	44	80994	18673	99667	101393	14011
Jan:	44	84474	19324	103798	106192	11617
Feb:	44	82964	18973	101937	101741	11813
Mar:	44	80216	18821	99037	98190	12660
Apr:	44	81823	18864	100687	102183	11164

TABLE 17:EMPLOYMENT AND WAGES/SALARIES.

Year (July-June)/ Month	No. Of Reporting Mills	E M P L O Y M E N T (NOS)*			WAGES/SALARIES (000 Rs.)	
		Total	Production Workers	Office Staff	Total	Production Workers
2006-07	54	4308	2551	1757	20138	11068
2007-08	54	3917	2408	1509	19923	11167
2008-09	54	3406	2109	1297	23522	12589
2009-10	54	3449	2176	1273	30532	17526
2010-11	54	3675	2366	1309	34883	20727
2011-12	54	3703	2558	1145	35708	20873
2012-13	54	3798	2625	1173	40008	23277
2013-14	54	4072	2753	1319	50720	28667
2014-15	53	4009	2756	1253	55717	31302
2015-16	53	4122	2901	1221	64521	38408
2016-17	50	3933	2678	1255	62720	35328
2017-18	51	4105	2737	1368	65889	38083
2018-19	52	4111	2787	1324	69521	39564
2019-20	50	5001	3286	1715	77791	41351
2020-21	50	5111	3250	1861	91913	42105
2021-22	44	5295	3287	2008	99277	48422
(Jul: – Apr:)	<u>44</u>	<u>5293</u>	<u>3277</u>	<u>2016</u>	<u>98631</u>	<u>48180</u>
Jul:	44	5121	3109	2012	93456	44544
Aug:	44	5195	3206	1989	96667	49786
Sep:	44	5204	3227	1977	97573	46748
Oct:	44	5274	3279	1995	97913	46855
Nov:	44	5283	3286	1997	98266	46906
Dec:	44	5329	3302	2027	99440	48213
Jan:	44	5339	3324	2015	99696	48380
Feb:	44	5351	3332	2019	99782	49627
Mar:	44	5411	3349	2062	101367	50313
Apr:	44	5425	3355	2070	102153	50425
May:	44	5259	3288	1971	101407	48392
Jun:	44	5348	3387	1961	103603	50878
<u>2022-23</u>						
(Jul: – Apr:)	<u>44</u>	<u>5609</u>	<u>3432</u>	<u>2177</u>	<u>120358</u>	<u>59174</u>
Jul:	44	5351	3392	1959	105579	51995
Aug:	44	5351	3392	1959	105579	51995
Sep:	44	5371	3362	2009	105974	51535
Oct:	44	5525	3254	2271	122547	60109
Nov:	44	5611	3265	2346	123348	62129
Dec:	44	5629	3267	2362	123795	63619
Jan:	44	5839	3644	2195	124217	65322
Feb:	44	5810	3583	2227	130667	61288
Mar:	44	5752	3554	2198	130031	61724
Apr:	44	5848	3611	2237	131845	62020

* =Monthly averages over the ten months.

PERFORMANCE OF BEVERAGES INDUSTRY

Report for the month of April 2023

Coverage

The report covers Thirty (30) Beverages factories of the Punjab.

Production

The factories produced 221576 thousand litres of Soft Drinks and 20878 thousand litres of Fruit Juices during April 2023. The production of Soft Drinks and Fruit Juices was 7.5% higher and 0.3% lower than the last month respectively.

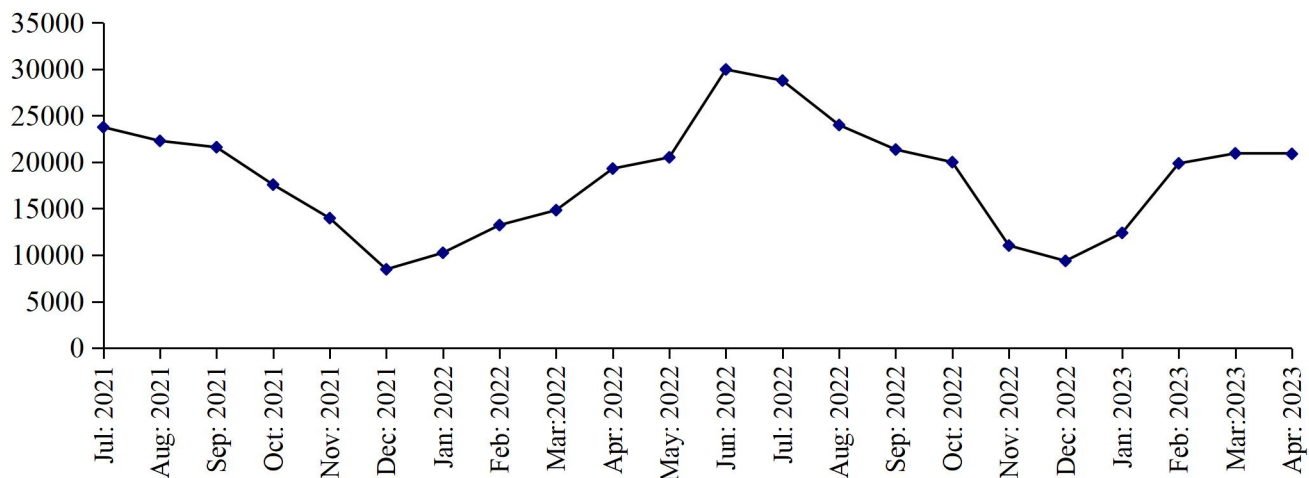
Employment

Total employment in these factories was 8350 which was 0.1% lower than the last month. Out of this total employment 4304 were production workers.

PRODUCTION OF FRUIT JUICES

July 2021 to April 2023

('000'Ltrs)



PRODUCTION OF SOFT DRINKS

July 2021 to April 2023

('000' Ltrs)

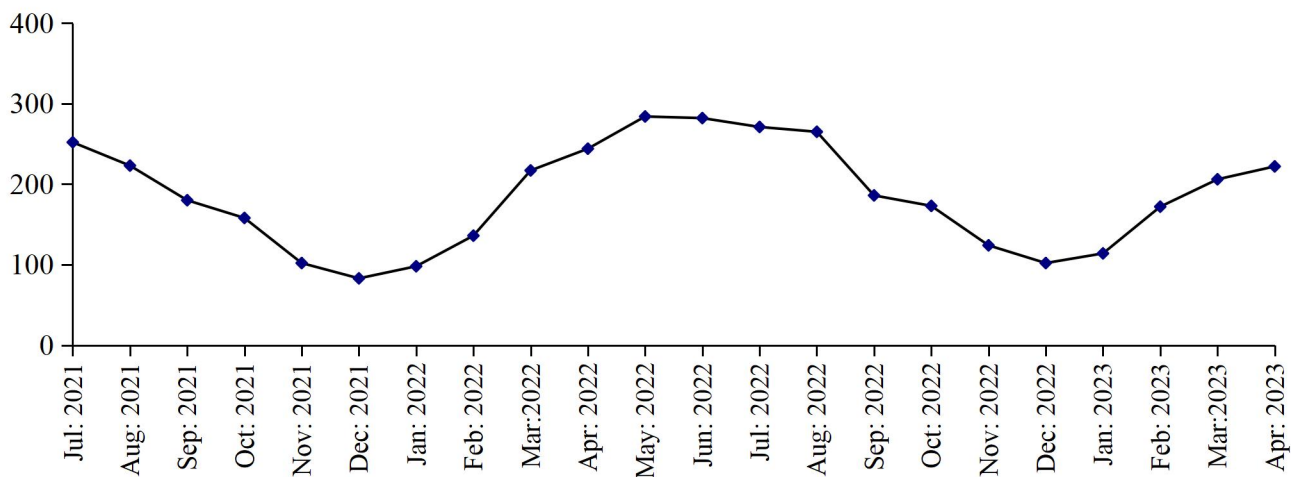


Table 18: MANUFACTURING ACTIVITY OF BEVERAGES INDUSTRY.

Year (July-June)/ Month	No. Of Reporting Units	PRODUCTION (in '000' Ltrs)		EMPLOYMENT (NOS.)*	
		Soft Drinks	Fruit Juices	Total	Production Workers
2006-07	39	1144416	105395	5518	2536
2007-08	37	1367154	98692	6621	2733
2008-09	37	1445760	67932	6492	3037
2009-10	37	1041643	68020	6925	3323
2010-11	37	982963	92115	7577	3027
2011-12	37	1155234	116048	7948	3136
2012-13	37	1349580	120176	8224	3501
2013-14	37	1409663	127571	8125	3659
2014-15	34	1552102	156889	8328	4379
2015-16	30	1722698	139237	15461	8600
2016-17	29	1964432	154877	8549	3997
2017-18	30	1893694	177397	8981	4216
2018-19	31	1830166	219885	8529	4306
2019-20	31	1587814	183550	8173	4099
2020-21	31	1964275	172608	7988	4053
2021-22	30	2258557	215698	8173	4210
(Jul: – Apr:)	<u>30</u>	<u>1692898</u>	<u>165236</u>	<u>8115</u>	<u>4159</u>
Jul:	30	252003	23753	8270	4342
Aug:	30	222993	22278	8338	4322
Sep:	30	180057	21597	8263	4274
Oct:	30	157763	17572	8074	4122
Nov:	30	102146	13969	7970	4039
Dec:	30	83127	8469	7756	3839
Jan:	30	97868	10246	7719	3814
Feb:	30	135719	13224	7925	3973
Mar:	30	217189	14829	8402	4414
Apr:	30	244033	19299	8433	4449
May	30	284156	20505	8435	4440
Jun:	30	281503	28957	8493	4488
<u>2022-23</u>					
(Jul: – Apr:)	<u>30</u>	<u>1766084</u>	<u>184390</u>	<u>8229</u>	<u>4257</u>
Jul:	30	254026	26462	8425	4413
Aug:	30	214578	22130	8384	4377
Sep:	30	185552	21348	8203	4322
Oct:	30	172708	19991	8184	4264
Nov:	30	124018	11026	8040	4145
Dec:	30	101568	9377	8086	4107
Jan:	30	113829	12385	8070	4102
Feb:	30	172135	19856	8192	4199
Mar:	30	206094	20937	8359	4332
Apr:	30	221576	20878	8350	4304

* =Monthly Average over the ten months.

PERFORMANCE OF SUGAR INDUSTRY

Report for the month of April 2023

Coverage

This report covers Forty four (44) Sugar Mills located in the Punjab Province.

Cane Crushing

Total cane crushed for the month of “April” 2023, because of the off crushing season.

Production

Total Sugar Produced during the month of “April” 2023, is nil production due to off season.

Sale and Stock of Sugar 2022-23

The sugar sold out from the previous stock as reported during the month of April 2023 was 479574 Metric Tons and the remaining stock of sugar is 2804248 Metric Tons.

Employment and Wages / Salaries

Total employment during the month of April 2023 was 29641. Out of this total employment, the number of production workers were 20473. The total wages/salaries during this month is amounted to 762 million rupees.

MONTHLY PRODUCTION OF SUGAR

Season 2021-22 VS 2022-23

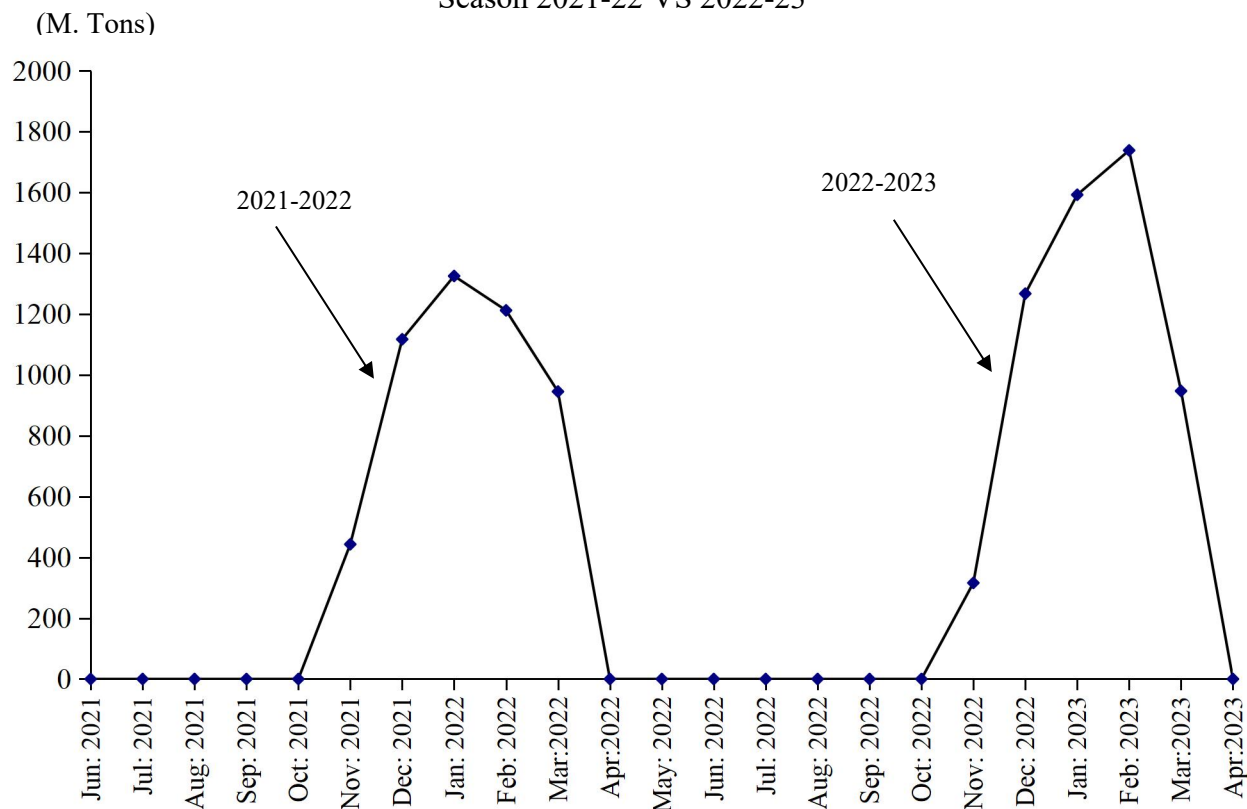


Table 19: MANUFACTURING ACTIVITY OF SUGAR INDUSTRY.

(Metric Tons)

Year	Months	No. Of Units Covered	Sugarcane Crushed	Opening Stock Of Sugar	Production Of Sugar	Sale Of Sugar	Closing Stock Of Sugar	Molasses
2006-07	Nov: 06 – Apr: 07	41	27105733	-	2163263	-	-	1544850
2007-08	Nov: 07- May 08	41	29394739	-	2676345	-	-	1751935
2008-09	Nov:08-Apr:09	45	20388990	-	1926209	-	-	1280422
2009-10	Nov:09 –March10	46	22460655	-	1987285	-	-	887362
2010-11	Nov:10 –April 11	46	27026172	128193	2475907	2013178	590922	709876
2011-12	Oct: 11- Apr: 12	46	32310644	590922	3057611	2633244	1015289	750699
2012-13	Nov:12–May 13	46	35745878	1015289	3739171	4064180	690280	666328
2013-14	Nov:13–Apr: 14	46	30864941	690280	3075144	2013384	1752040	807507
2014-15	Nov:14–Apr: 15	46	31453631	1752040	3036312	2775995	2012357	66682
2015-16	Nov:15–Apr: 16	44	28922605	2012357	2666278	2951038	1727597	571184
2016-17	Nov: 16-Apr: 17	44	44143327	1727597	4314228	2754948	3286877	1522522
2017-18	Nov: 17-Apr: 18	45	53190310	3286877	5111165	6745070	1652972	1352698
2018-19	Dec: 18-Apr: 19	45	30835769	1652972	4868545	4278122	2243395	1361477
2019-20	Nov: 19-Mar:20	44	23839905	1973322	3102104	4054794	1020632	671189
2020-21	Nov: 20-Mar:21	44	50011167	1020632	3877150	3620582	1277200	1166132
2021-22	Nov:21-Apr:22	44	47559505	1277200	5258131	4696627	1838704	2631504
<u>2022-23</u>	<u>(Jul: – Apr:)</u>	<u>44</u>	<u>21410225</u>	<u>1838704</u>	<u>5575980</u>	<u>4610436</u>	<u>2804248</u>	<u>778634</u>
	Jul:	44	-	1838704	-	309554	1529150	-
	Aug:	44	-	1529150	-	207363	1321787	-
	Sep:	44	-	1321787	-	254986	1066801	-
	Oct:	44	-	1066801	-	241631	825170	-
	Nov:	44	4998520	825170	31644	277021	579793	4450
	Dec:	44	4831330	579793	1267202	543448	1303547	168172
	Jan:	44	6443499	1303547	1591828	571997	2323378	248718
	Feb:	44	2591038	2323378	1738125	1299417	3033312	233665
	Mar:	44	2545838	3033312	947181	696671	3283822	123629
	Apr:	44	3283822	-	-	479574	2804248	-

TABLE 20: EMPLOYMENT AND WAGES / SALARIES

Year /Months	No. Of Units Covered	EMPLOYMENT (Nos.)			WAGES / SALARIES (000 Rs.)	
		Total	Production Workers	Office Staff	Total	Production Workers
2007-2008	<u>41</u>	<u>28047</u>	<u>17824</u>	<u>10223</u>	<u>155822</u>	<u>89252</u>
(Crushing Season)		31966	20512	11454	176659	103596
(Non-Crushing Season)		22559	14062	8497	126651	69170
2008-2009	<u>45</u>	<u>21716</u>	<u>13193</u>	<u>8524</u>	<u>164256</u>	<u>95503</u>
(Crushing Season)		<u>27532</u>	<u>17387</u>	<u>10145</u>	<u>193291</u>	<u>119674</u>
(Non-Crushing Season)		20262	12144	32473	156998	89461
2009-10	<u>46</u>	<u>24448</u>	<u>15250</u>	<u>9197</u>	<u>197290</u>	<u>116870</u>
(Crushing Season)		31580	20435	11145	247830	153135
(Non-Crushing Season)		19354	11547	7807	161190	90967
2010-11	<u>46</u>	<u>22967</u>	<u>14468</u>	<u>8499</u>	<u>209749</u>	<u>126526</u>
(Crushing Season)		27879	18340	9539	246395	154557
(Non-Crushing Season)		18055	10595	7459	173102	98495
2011-12	<u>46</u>	<u>23078</u>	<u>13932</u>	<u>9145</u>	<u>230146</u>	<u>132212</u>
(Crushing Season)		26017	10957	8007	204749	111423
(Non-Crushing Season)		18964	16058	9959	248287	147060
(2012-13)	<u>46</u>	<u>25311</u>	<u>16021</u>	<u>9848</u>	<u>276892</u>	<u>171611</u>
(Crushing Season)	46	28541	19094	10404	318296	203325
(Non-Crushing Season)	46	20788	11719	9069	127701	127212
(2013-14)	<u>46</u>	<u>25672</u>	<u>16563</u>	<u>9009</u>	<u>318239</u>	<u>196709</u>
(Crushing Season)	46	29968	19690	10278	366452	229798
(Non-Crushing Season)	46	21300	13907	7393	260446	162496
(2014-15)	<u>46</u>	<u>23845</u>	<u>15042</u>	<u>8804</u>	<u>337354</u>	<u>207609</u>
(Crushing Season)	46	27988	18137	9852	389645	244041
(Non-Crushing Season)	46	19703	11947	7755	285051	171178
(2015-16)	<u>44</u>	<u>22554</u>	<u>14023</u>	<u>8531</u>	<u>341965</u>	<u>205969</u>
(Crushing Season)	44	25752	16141	9611	388494	237002
(Non-Crushing Season)	44	19356	11738	7618	298435	174937
2016-17	<u>45</u>	<u>24469</u>	<u>14900</u>	<u>9569</u>	<u>404061</u>	<u>250817</u>
(Crushing Season)	45	30354	18632	11722	480241	305510
(Non-Crushing Season)	45	18583	11168	7415	327881	156664
2017-18	<u>45</u>	<u>26874</u>	<u>16910</u>	<u>9964</u>	<u>588807</u>	<u>325440</u>
(Crushing Season)	45	31429	20009	11419	706001	393686
(Non-Crushing Season)	45	22318	13810	8507	471613	257195
2018-19	<u>45</u>	<u>28234</u>	<u>18208</u>	<u>10226</u>	<u>720481</u>	<u>406815</u>
(Crushing Season)	45	32495	21556	10939	794668	459287
(Non-Crushing Season)	45	25190	15817	9373	667492	369336
2019-20	<u>45</u>	<u>19599</u>	<u>12795</u>	<u>6834</u>	<u>419356</u>	<u>265765</u>
(Crushing Season)	45	31689	21217	10472	722697	285965
(Non-Crushing Season)	45	22940	15223	9373	7717	507681
2020-21	<u>44</u>	<u>27571</u>	<u>17326</u>	<u>10245</u>	<u>616305</u>	<u>359633</u>
(Crushing Season)	44	33603	21507	12096	692380	424448
(Non-Crushing Season)	44	21538	13145	8393	540231	294819
2021-22	<u>44</u>	<u>28202</u>	<u>17665</u>	<u>10537</u>	<u>680443</u>	<u>439798</u>
(Crushing Season)	44	34807	21899	12908	760582	504374
(Non-Crushing Season)	44	21597	13430	8167	600255	375223
(Jul: – Apr:)	<u>44</u>	<u>28746</u>	<u>18747</u>	<u>9999</u>	<u>731096</u>	<u>457412</u>
Jul:	44	19071	11924	7147	605819	394717
Aug:	44	18225	10540	7685	583200	347820
Sep:	44	18125	10530	7595	580000	347490
Oct:	44	19621	12308	7313	631983	411139
Nov:	44	33416	20766	12650	644615	427104
Dec:	44	36439	25343	11096	750716	521968
Jan:	44	37939	25351	12588	947188	639278
Feb:	44	39165	26239	12926	950536	851007
Mar:	44	35814	23998	11816	855053	579911
Apr:	44	29641	20473	9168	761853	511098

*= Monthly average over the ten months/ crushing/Non crushing season.

PERFORMANCE OF CIGARETTES INDUSTRY

Report for the month of April 2023

Coverage

This report covers three (03) Cigarettes factories of the Punjab.

Production

The production of Cigarettes during the month was 1252 Million Nos. Which was 4.9% lower than March 2023.

Sale and Stock

Sale of Cigarettes during the month was 2433 Million Nos. Which was 33.3% higher than March 2023.

Employment

Total employment in these factories during the month was 581, which was 1.2% lower than the last month. Out of this total employment, 389 were production workers. Total wages/salaries for the month were amounted to Rs.64.9 Million.

PRODUCTION OF CIGARETTES

July 2021 to April 2023

(Millions Nos.)

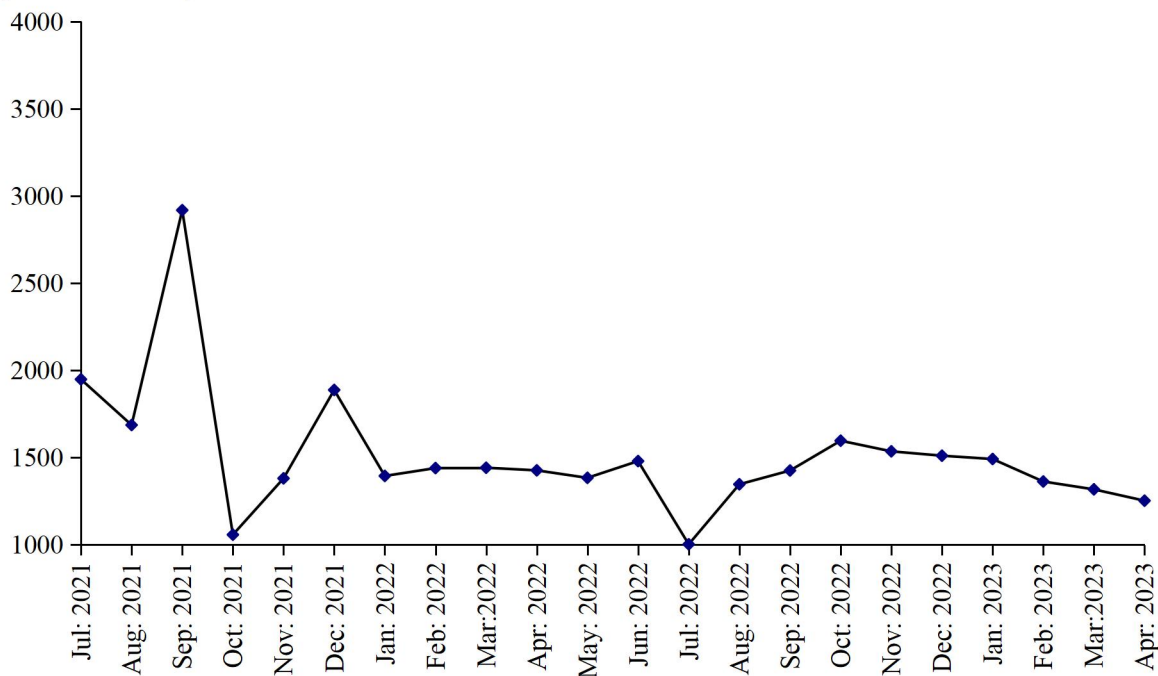


Table No.21 MANUFACTURING ACTIVITY OF CIGARETTES INDUSTRY.

Year (July-June)/ Month	No. Of Reporting Units	PRODUCTION, SALE & STOCK OF CIGARETTES (Million Nos.)			EMPLOYMENT* (Nos.)		WAGES/SALARIES (‘000’Rs.)	
		Production	Sale	Stock at the end	Total	Production Workers	Total	Production Workers
2006-07	3	29901.9	29642.1	1297.5	1398	1272	18278	14591
2007-08	3	34987.2	35762.5	510	1364	1238	22291	16829
2008-09	3	43058.0	42901.0	667	1307	1089	23946	18512
2009-10	3	37296.0	36987.0	976	1269	1136	26379	20638
2010-11	3	37944	37420	1500	1178	1051	28432	25294
2011-12	3	34955	35961	494	998	898	32942	29936
2012-13	3	37845	37996	343	907	811	27023	22214
2013-14	3	33094	24934	8503	904	797	27781	22032
2014-15	3	33966	38328	4141	905	793	32807	24413
2015-16	3	27502	29914	1729	808	707	33019	24855
2016-17	3	28452	274135	3046	603	509	33264	25008
2017-18	3	28324	30503	867	509	425	32139	23057
2018-19	3	35850	27486	9231	552	446	36978	21686
2019-20	3	25634	21861	13234	640	493	45641	20945
2020-21	3	21353	19306	15124	657	494	50439	21564
2021-22	3	19438	19013	15549	658	490	55998	24776
(Jul: - Apr:)	<u>3</u>	<u>16576</u>	<u>15789</u>	<u>15911</u>	<u>663</u>	<u>504</u>	<u>54204</u>	<u>24455</u>
Jul:	3	1948	1481	15591	656	484	49056	21725
Aug:	3	1686	1296	15981	656	484	53974	21576
Sep:	3	2918	2325	16574	658	485	52676	21758
Oct:	3	1057	1421	16210	659	485	52676	21758
Nov:	3	1380	1292	16298	673	520	53886	22158
Dec:	3	1887	1709	16476	673	520	53886	23828
Jan:	3	1394	1401	16469	676	523	53988	28872
Feb:	3	1439	1693	16215	678	524	53988	28872
Mar:	3	1441	1335	16321	651	512	53721	28637
Apr:	3	1426	1836	15911	645	507	64190	25367
May	3	1383	1793	15501	636	472	65089	25367
Jun:	3	1479	1431	15549	633	358	64846	27353
2022-23								
(Jul:- Apr:)	<u>3</u>	<u>13836</u>	<u>18931</u>	<u>10454</u>	<u>627</u>	<u>417</u>	<u>65017</u>	<u>32485</u>
Jul:	3	1002	1551	15000	630	372	63984	25377
Aug:	3	1346	1472	14874	639	444	65178	30192
Sep:	3	1425	1577	14722	643	452	65586	30736
Oct:	3	1596	1573	14745	639	448	65976	30731
Nov:	3	1535	1519	14761	648	451	66036	30805
Dec:	3	1510	1415	14856	648	451	66036	30805
Jan:	3	1491	1331	13016	648	451	66036	30805
Feb:	3	1362	2235	12143	608	358	63161	38023
Mar:	3	1317	1825	11635	588	358	63231	38223
Apr:	3	1252	2433	10454	581	389	64943	39157

* = Monthly Average over the ten months.

PERFORMANCE OF CEMENT INDUSTRY

Report for the month of April 2023

Coverage

This report covers twelve (12) factories in the Punjab.

Production of Clinker

The cement factories produced 16685372 Metric Tons of Clinker during April 2023, which was 16.6% lower than the last month. The factories consumed 1339402 Metric Tons of Clinker to produce Cement.

Production of Cement

The cement factories produced 1548970 Metric Tons of Cement during the month, which was 22.1% lower than the last month.

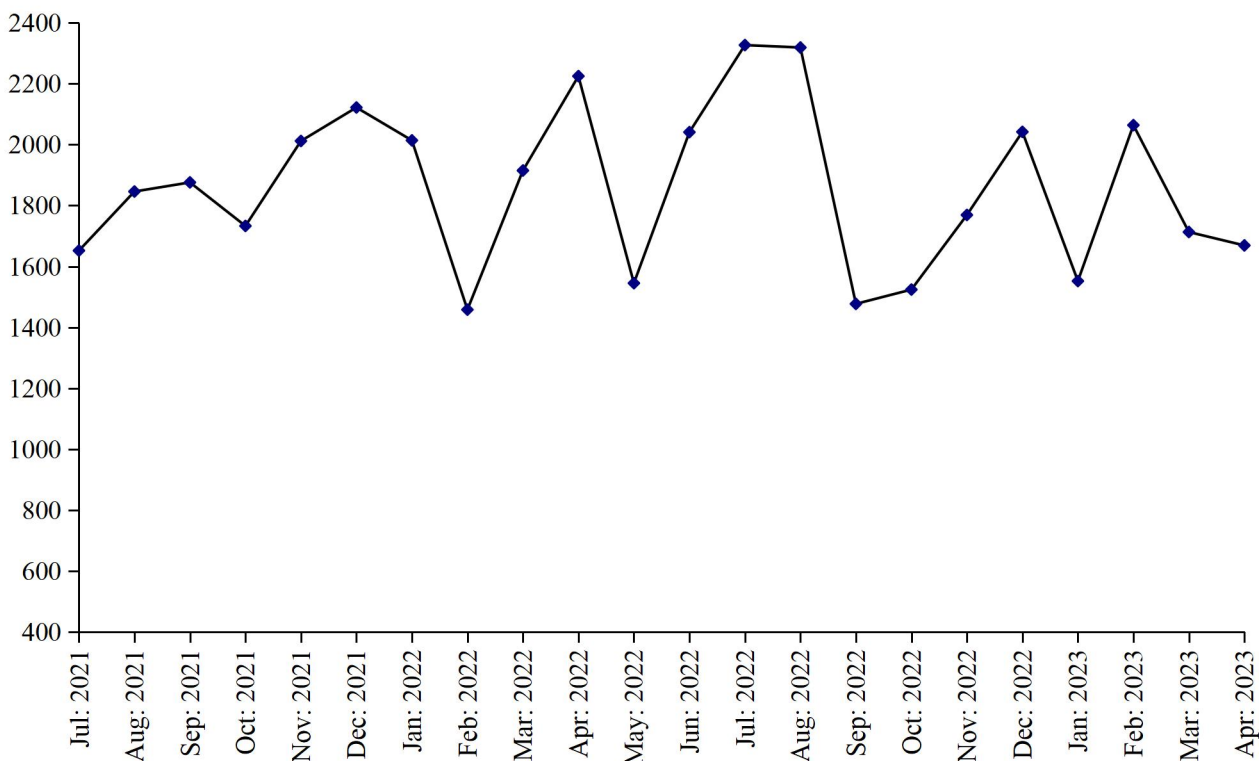
Employment

Total employment in the factories as reported was 7296 which was 0.4% lower than the last month. Out of this total employment, 4533 were production workers. Total wages/salaries for the month under report were 658.6 Million Rupees.

PRODUCTION OF CLINKER

July 2021 to April 2023

(000 M. Tons)



PRODUCTION OF CEMENT

July 2021 to April 2023

(000 M. Tons)

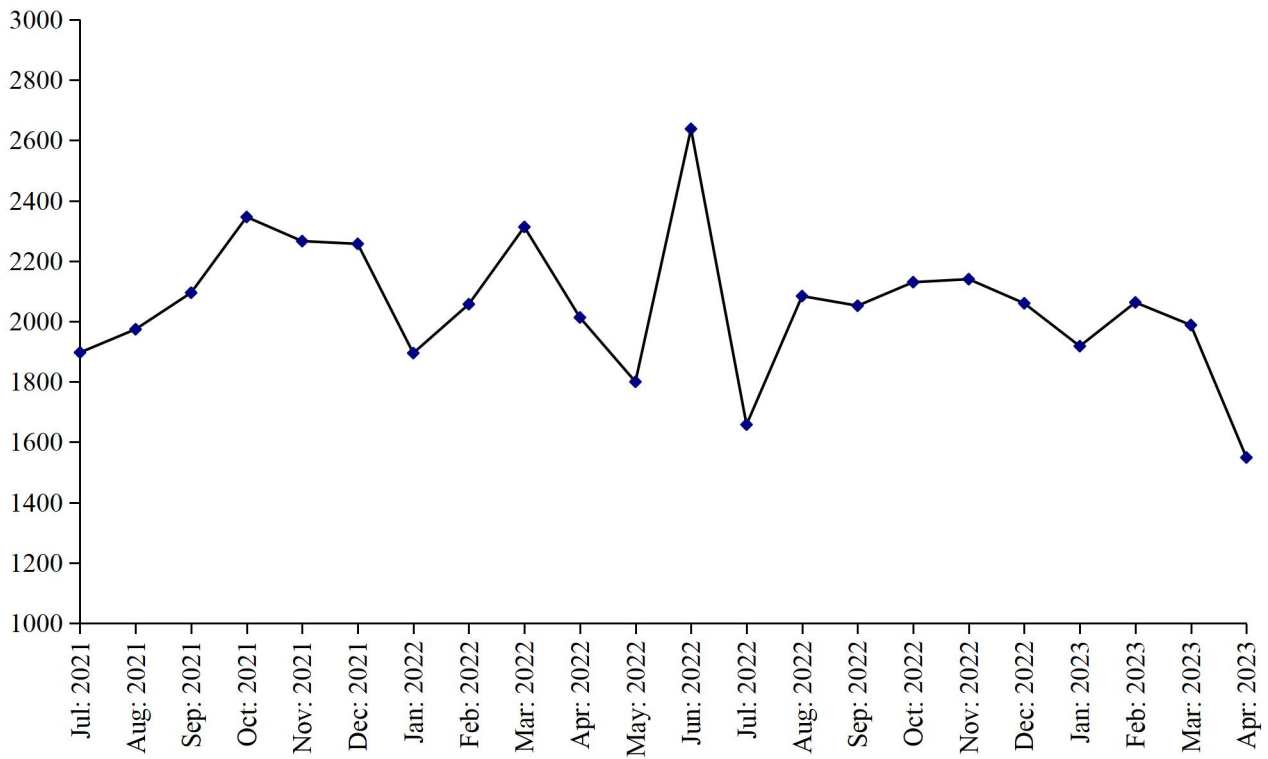


Table No.22 DETAIL OF PRODUCTION, CONSUMPTION AND STOCK OF CLINKER.

(M.Tons)

Year (July-June)/ Month	No. Of reporting Units	Stock at the Beginning	Production	Consumption	Stock at the end
2006-07	12	372278	8573452	8533162	412569
2007-08	13	412569	10403031	10417823	397777
2008-09	13	397777	14275929	13996684	677022
2009-10	13	677022	15438372	15593172	522222
2010-11	13	522222	14340746	13920004	942964
2011-12	13	942964	13937197	13851368	1028793
2012-13	12	1028793	15210981	14730923	1508851
2013-14	12	1508851	15780981	15535319	1754513
2014-15	12	1754513	15926314	15853807	1827020
2015-16	12	1827020	15973852	17140392	660480
2016-17	12	660480	19101688	18498074	1264094
2017-18	12	1264094	20080615	19767345	1577364
2018-19	12	1577364	18892935	18992061	1478238
2019-20	12	1478238	19838457	19197793	2118902
2020-21	12	2118902	21735282	21668097	2186087
2021-22	12	2186087	22442834	22063309	2565612
(Jul: – Apr:)	<u>12</u>	<u>2186087</u>	<u>18853777</u>	<u>18619918</u>	<u>2419946</u>
Jul:	12	2186087	1652107	1531086	2307108
Aug:	12	2307108	1846363	1612070	2541401
Sep:	12	2541401	1876108	1753780	2663729
Oct:	12	2663729	1733236	2009680	2387285
Nov:	12	2387285	2011603	2197532	2201356
Dec:	12	2201356	2121533	2112822	2210067
Jan:	12	2210067	2014331	1727433	2496965
Feb:	12	2496965	1457714	1887601	2067078
Mar:	12	2067078	1915494	2084743	1897829
Apr:	12	1897829	2225288	1703171	2419946
May:	12	2419946	1547777	1522494	2445229
Jun:	12	2445229	2041280	1920897	2565612
<u>2022-23</u>					
(Jul: – Apr:)	<u>12</u>	<u>2251510</u>	<u>16685372</u>	<u>16522183</u>	<u>2414699</u>
Jul:	12	2251510	2088489	1370038	2969961
Aug:	12	2969961	1027513	1464659	2532815
Sep:	12	2532815	1476615	1777019	2232411
Oct:	12	2232411	1524220	1781599	1975032
Nov:	12	1975032	1769433	1831898	1912567
Dec:	12	1912567	2041714	1717585	2236696
Jan:	12	2236696	1551915	1668587	2120024
Feb:	12	2120024	2063896	1884200	2299720
Mar:	12	2299720	1713215	1687196	2325739
Apr:	12	2325739	1428362	1839402	2414699

Table No.23 DETAIL OF PRODUCTION, SALE AND STOCK OF CEMENT

(M.Tons)

Year (July- June)/ Month	No. Of Reporting Units	Stock at the beginning	Production	S O L D			Stock at the end
				Total	Within country	Export- ed	
2006-07	12	57012	8882277	8793994	8793994	-	145295
2007-08	13	145295	10713689	10767713	10767713	-	91271
2008-09	13	91271	14227580	14068486	14068486	-	250365
2009-10	13	250365	16951531	16973086	16973086	-	228810
2010-11	13	228810	14685518	14528966	14528966	-	385362
2011-12	13	385362	15269328	15299852	15299852	-	354838
2012-13	12	354838	15929819	15922363	15922363	-	362294
2013-14	12	362294	16668915	16472689	16472689	-	558520
2014-15	12	558520	17175158	17358446	17358446	-	375232
2015-16	12	375232	18479957	18588721	18588721	-	266468
2016-17	12	266468	19569160	19445145	19445145	-	390483
2017-18	12	390483	22067871	22188484	22188484	-	269870
2018-19	12	269870	21077461	20903996	20903996	-	443335
2019-20	12	443335	20386575	20021979	20021979	-	807931
2020-21	12	807931	24535481	24360442	24360442	-	982970
2021-22	12	982970	25551134	25220928	25220928	-	1313176
(Jul: – Apr:)	12	982970	21112670	20859078	20859078	=	1236562
Jul:	12	982970	1896820	1759516	1759516	-	1120274
Aug:	12	1120274	1974246	1929710	1929710	-	1164810
Sep:	12	1164810	2094744	2089161	2089161	-	1170393
Oct:	12	1170393	2346177	2283767	2283767	-	1232803
Nov:	12	1232803	2265548	2235177	2235177	-	1263174
Dec:	12	1263174	2256806	2247223	2247223	-	1272757
Jan:	12	1272757	1894814	1839850	1839850	-	1327721
Feb:	12	1327721	2057450	2076809	2076809	-	1308362
Mar:	12	1308362	2312804	2411977	2411977	-	1209189
Apr:	12	1209189	2013261	1985888	1985888	-	1236562
May:	12	1236562	1800109	1721343	1721343	-	1315328
Jun:	12	1315328	2638355	2640507	2640507	-	1313176
<u>2022-23</u>							
(Jul: – Apr:)	12	1313176	18792813	18841860	18841860	=	1264129
Jul:	12	1313176	1288682	1186775	1186775	-	1415083
Aug:	12	1415083	1603861	1710889	1710889	-	1308055
Sep:	12	1308055	2052463	2052262	2052262	-	1308256
Oct:	12	1308256	2130127	2089301	2089301	-	1349082
Nov:	12	1349082	2140314	2133084	2133084	-	1356312
Dec:	12	1356312	2060063	2036330	2036330	-	1380045
Jan:	12	1380045	1917740	2001374	2001374	-	1296411
Feb:	12	1296411	2062575	2041991	2041991	-	1316995
Mar:	12	1316995	1988018	1978052	1978052	-	1326961
Apr:	12	1326961	1548970	1611802	1611802	-	1264129

Table No.24 EMPLOYMENT AND WAGES/SALARIES OF CEMENT INDUSTRY

Year (July-June)/ Month	No. Of Reporting Units	EMPLOYMENT (No)*			WAGES/SALARIES (000 Rs.)	
		Total	Production Workers	Non-Production Workers	Total	Production Workers
2006-07	12	4950	2839	2111	62364	28354
2007-08	13	5429	3200	2229	113212	54248
2008-09	13	5858	3906	1952	137089	755759
2009-10	13	6272	4292	1980	157409	80564
2010-11	13	6713	4631	2082	177979	94502
2011-12	13	6614	4729	1885	195861	115717
2012-13	12	6463	4591	1872	226498	135792
2013-14	12	6593	4648	1945	241852	140576
2014-15	12	6767	4817	1950	301847	178187
2015-16	12	7046	5009	2037	384190	222124
2016-17	12	7627	5178	2448	521509	292515
2017-18	12	8033	5262	2771	729712	399586
2018-19	12	8077	5360	2717	668155	384602
2019-20	12	7988	5400	2588	634682	387052
2020-21	12	7912	5328	2583	661961	405863
2021-22	12	7969	5325	2644	717914	438054
(Jul: – Apr:)	<u>12</u>	<u>8049</u>	<u>5416</u>	<u>2633</u>	<u>728587</u>	<u>449568</u>
Jul:	12	8210	5620	2590	707723	445546
Aug:	12	8170	5593	2577	744994	468152
Sep:	12	8117	5568	2549	748078	466123
Oct:	12	8115	5567	2548	749369	473170
Nov:	12	8101	5561	2540	750353	472517
Dec:	12	8218	5499	2719	763646	471320
Jan:	12	8065	5357	2708	740527	456321
Feb:	12	8059	5358	2701	739443	455027
Mar:	12	7725	5033	2692	675027	395887
Apr:	12	7705	5002	2703	673907	391614
May:	12	7563	4866	2697	663063	381770
Jun:	12	7575	4881	2694	666032	379198
<u>2022-23</u>						
(Jul: – Apr:)	<u>12</u>	<u>7417</u>	<u>4515</u>	<u>2902</u>	<u>668879</u>	<u>367868</u>
Jul:	12	7449	4695	2754	662075	371559
Aug:	12	7426	4699	2727	673867	375353
Sep:	12	7426	4700	2726	673448	375018
Oct:	12	7484	4513	2971	676081	371098
Nov:	12	7466	4434	3032	673403	366475
Dec:	12	7444	4428	3016	673371	366319
Jan:	12	7412	4417	2995	673962	366702
Feb:	12	7440	4423	3017	657608	366947
Mar:	12	7322	4305	3017	666397	360466
Apr:	12	7296	4533	2763	658579	358743

* = Monthly average over the ten months.

PERFORMANCE OF FERTILIZER INDUSTRY

Report for the month of April 2023

Coverage

This report covers Seven (07) fertilizer factories in the Punjab Province.

Production

These factories produced 299647 Metric Tons of Urea, 0 Metric Tons of Super Phosphate, 74016 Metric Tons of Amm. Nitrate and 61807 Metric Tons of Nitro Phosphate. The overall production of Fertilizer during the month was 20.9% higher than the last month.

Sale and Stock

These fertilizer factories reported a sale of 208098 Metric Tons of Urea, 13 Metric Tons of Super phosphate, 74016 Metric Tons of Amm. Nitrate and 60948 Metric Tons of Nitro Phosphate. The stock of Urea, Super Phosphate, Amm. Nitre and Nitro Phosphate at the end of the month was 110011, 7820, 1685 and 1352 Metric Tons respectively.

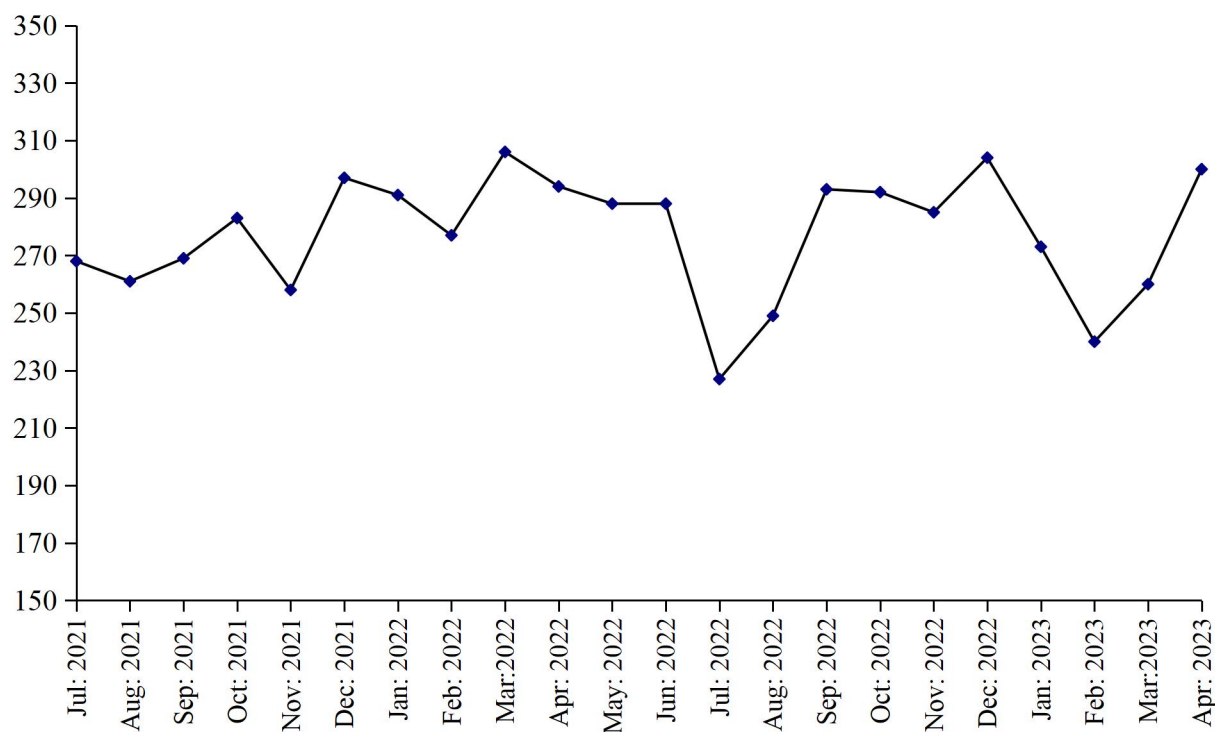
Employment and Wages/Salaries

Total employment during the month was 5376 which is. 0.3% lower than the last month. Out of this total employment 3395 were production workers. Total Wages/Salaries for the month under report were amounted to 993.9 Million Rupees.

PRODUCTION OF UREA

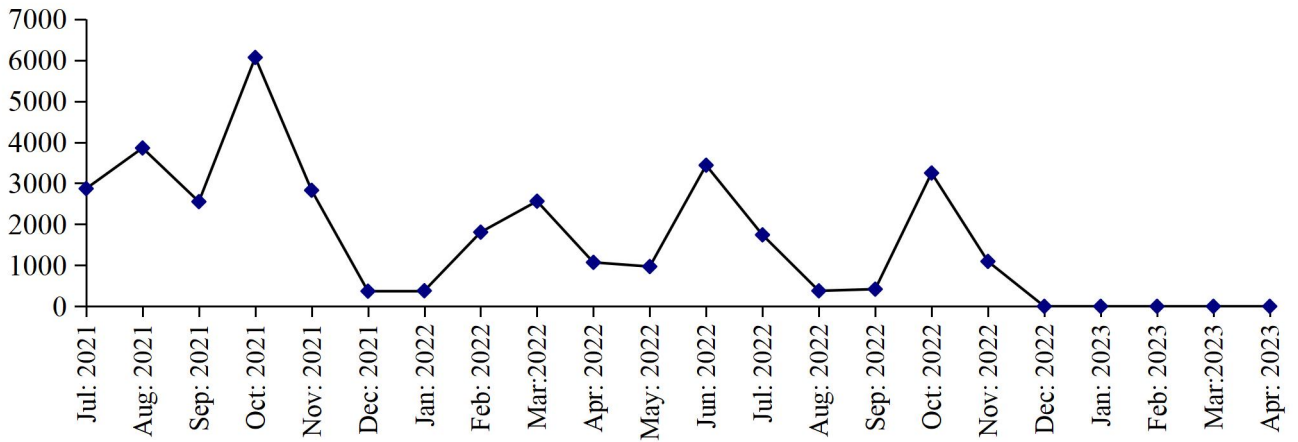
July 2021 to April 2023

(000 M. Tons)



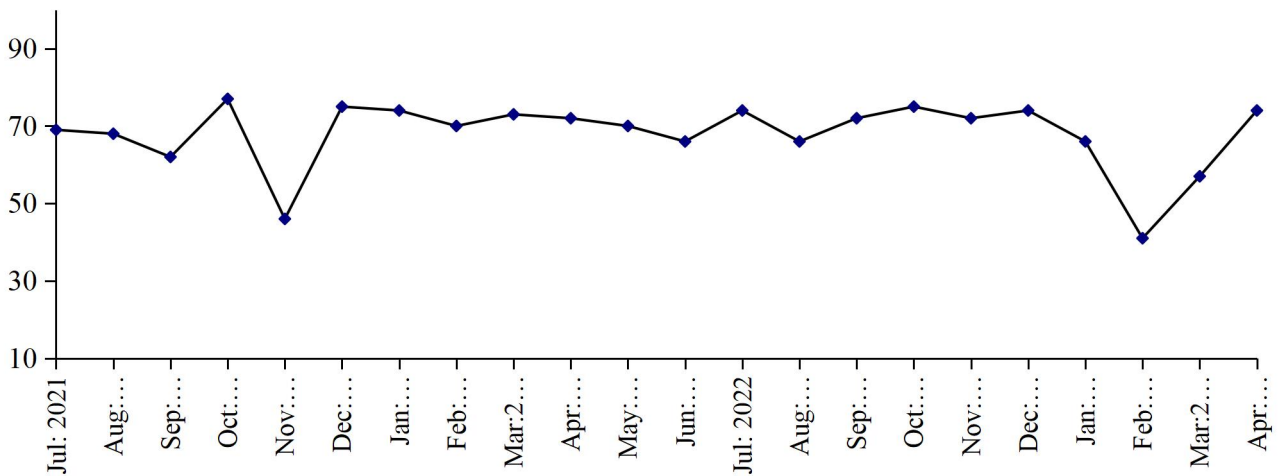
PRODUCTION OF SUPER PHOSPHATE

(000 M. Tons) July 2021 to April 2023



PRODUCTION OF AMM. NITRATE

(000 M. Tons) July 2021 to April 2023



PRODUCTION OF NITRO PHOSPHATE

(000 M. Tons) July 2021 to April 2023

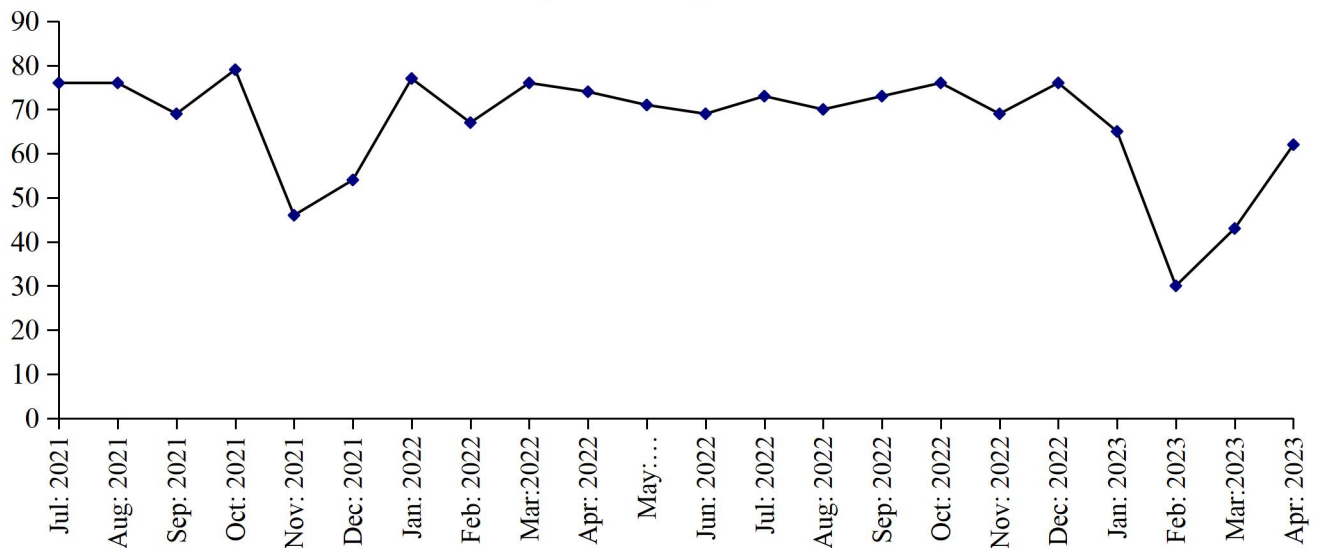


Table No: 25 DETAIL OF PRODUCTION, SALE AND STOCK OF UREA AND AMM. SULPHATE

(M. Tons)

Year (July-June)/ Month	U R E A			AMM. SULPHATE		
	Production	Sale	Stock at The end	Production	Sale	Stock at the end
2006-07	3267943	3024493	321843	-	-	-
2007-08	3274090	3553613	42320	-	-	-
2008-09	3377275	3404025	15570	-	-	-
2009-10	3431545	3374056	73059	-	-	-
2010-11	3016783	3064387	25455	-	-	-
2011-12	2750392	2701061	74786	-	-	-
2012-13	2592718	2639313	28191	-	-	-
2013-14	2582330	2539991	70530	-	-	-
2014-15	2459980	2505550	24960	-	-	-
2015-16	2856143	2392405	488698	-	-	-
2016-17	2808518	2895909	401307	-	-	-
2017-18	2987690	3367935	21062	-	-	-
2018-19	3181203	3133449	68816	-	-	-
2019-20	3201765	3251695	18886	-	-	-
2020-21	3268768	3132828	154826	-	-	-
2021-22	3381465	3514260	22031	-	-	-
(Jul: – Apr:)	<u>2804791</u>	<u>2875704</u>	<u>83913</u>	=	=	=
Jul:	267660	302833	119653	-	-	-
Aug:	260817	331466	49004	-	-	-
Sep:	268983	262644	55343	-	-	-
Oct:	283418	86286	252475	-	-	-
Nov:	258361	447787	63049	-	-	-
Dec:	296917	326311	33655	-	-	-
Jan:	290980	307983	16652	-	-	-
Feb:	277309	285466	8495	-	-	-
Mar:	305863	272439	41919	-	-	-
Apr:	294483	252489	83913	-	-	-
May	288282	245035	127160	-	-	-
Jun:	288392	393521	22031	-	-	-
<u>2022-23</u>						
(Jul: – Apr:)	<u>2722553</u>	<u>2634623</u>	<u>110011</u>	=	=	=
Jul:	227313	201455	47889	-	-	-
Aug:	248817	258546	38160	-	-	-
Sep:	292779	283832	47107	-	-	-
Oct:	292032	291161	47978	-	-	-
Nov:	284606	309337	23247	-	-	-
Dec:	303961	311744	15514	-	-	-
Jan:	272783	266514	21783	-	-	-
Feb:	240385	241208	20960	-	-	-
Mar:	260230	262728	18462	-	-	-
Apr:	299647	208098	110011	-	-	-

Table No:26 DETAIL OF PRODUCTION, SALE AND STOCK OF SUPER PHOSPHATE AND AMM. NITRATE
(M. Tons)

Year (July-June)/ Month	SUPER PHOSPHATE			AMM. NITRATE		
	Production	Sale	Stock at The end	Production	Sale	Stock at the end
2006-07	67236	63270	8104	330756	338854	5839
2007-08	83146	78492	12758	343728	349559	8
2008-09	89171	75025	26904	344334	339921	4421
2009-10	46952	56524	17332	345735	330963	19193
2010-11	126909	137940	6301	298029	307696	9526
2011-12	123294	90442	39153	228664	227808	10382
2012- 13	44638	42997	40794	26574	36898	58
2013-14	10081	29493	21382	119631	119539	150
2014-15	18706	25502	14586	113541	65804	47887
2015-16	28023	33404	9205	237844	169639	116092
2016-17	23815	9546	23474	226183	328008	14267
2017-18	1027	23807	694	553091	532829	34529
2018-19	18244	18828	110	456249	487629	3149
2019-20	9034	9122	22	548571	544771	6949
2020-21	31087	28244	2865	756461	762169	1241
2021-22	28780	25353	6292	821680	819768	3153
(Jul: – Apr:)	<u>24370</u>	<u>24283</u>	<u>2952</u>	<u>685760</u>	<u>686610</u>	<u>391</u>
Jul:	2870	2378	3357	68776	67488	2529
Aug:	3860	1725	5492	67741	69099	1171
Sep:	2552	2406	5638	62255	61957	1469
Oct:	6067	10225	1480	77119	75720	2868
Nov:	2829	4231	78	45922	46639	2151
Dec:	369	421	26	75248	76887	512
Jan:	380	380	26	73840	73945	407
Feb:	1808	1133	701	69549	68599	1357
Mar:	2563	759	2505	73259	74081	535
Apr:	1072	625	2952	72051	72195	391
May	970	970	2952	69899	69764	526
Jun:	3440	100	6292	66021	63394	3153
<u>2022-23</u>						
(Jul: – Apr:)	<u>6884</u>	<u>5356</u>	<u>7820</u>	<u>670233</u>	<u>671701</u>	<u>1685</u>
Jul:	1742	1597	6437	74324	71321	6156
Aug:	378	378	6437	65792	67150	4798
Sep:	419	419	6437	71617	66065	10350
Oct:	3250	2257	7430	74824	76434	8740
Nov:	1095	179	8346	71927	77839	2828
Dec:	-	3	8343	73599	75964	463
Jan:	-	266	8078	66038	66128	373
Feb:	-	130	7947	41081	41081	373
Mar:	-	114	7833	57015	55703	1685
Apr:	-	14	7820	74016	74016	1685

Table No: 27 DETAIL OF PRODUCTION, SALE AND STOCK OF NITRO PHOSPHATE.

(M.Tons)

Year (July-June)/ Month	Production	Sale	Stock at the end
2006-07	325826	357595	80
2007-08	329655	267704	62031
2008-09	305678	362938	4771
2009-10	304444	286441	22774
2010-11	265490	287894	370
2011-12	198799	198818	351
2012- 13	22109	22460	0
2013-14	122494	122478	16
2014-15	101171	93467	7720
2015-16	221059	228779	0
2016-17	274512	269570	4942
2017-18	455002	459944	0
2018-19	449667	449667	0
2019-20	624396	615632	8764
2020-21	845493	846511	7746
2021-22	835140	832990	9896
(Jul: - Apr:)	<u>694352</u>	<u>691956</u>	<u>10142</u>
Jul:	76427	77902	6271
Aug:	76358	79618	3011
Sep:	68591	71456	146
Oct:	78859	78514	491
Nov:	45976	46117	350
Dec:	53587	53823	114
Jan:	77414	62611	14917
Feb:	67126	66468	15575
Mar:	75747	78156	13166
April:	74267	77291	10142
May:	71404	75550	5996
June:	69384	65484	9896
<u>2022-23</u>			
(Jul: – Apr:)	<u>636852</u>	<u>645396</u>	<u>1352</u>
Jul:	72715	62971	19640
Aug:	70175	73435	16380
Sep:	73067	71495	17952
Oct:	76121	79819	14254
Nov:	69087	66792	16549
Dec:	76302	77001	15850
Jan:	64588	71678	8760
Feb:	30185	30185	8760
Mar:	42805	51072	493
Apr:	61807	60948	1352

Table No: 28 EMPLOYMENT AND WAGES/SALARIES OF FERTILIZER INDUSTRY*

Year (July-June) / Month	No. Of Working Units	E M P L O Y M E N T (Nos.)*			WAGES/SALARIES (000 Rs.)	
		Total	Production Workers	Office Staff	Total	Production Workers
2006-07	6	4594	3221	1373	148034	93870
2007-08	6	4587	3277	1310	175821	113661
2008-09	5	4710	3316	1394	209439	132521
2009-10	5	4878	3388	1490	273098	166113
2010-11	6	5161	3496	1665	310502	181462
2011-12	6	5407	3671	1736	353344	207054
2012-13	6	5136	3469	1667	363237	210167
2013-14	6	4720	3121	1599	395486	224472
2014-15	6	5090	3015	2075	433858	222449
2015-16	6	5473	3070	2403	489752	235912
2016-17	6	5260	3045	2215	494139	260682
2017-18	7	6020	3616	2404	545307	287497
2018-19	7	6141	3663	2478	573893	295543
2019-20	7	5714	3443	2270	600079	321309
2020-21	7	5700	3590	2110	638195	355515
2021-22	7	5567	3647	1920	743477	417103
(Jul: - Apr:)	7	<u>5567</u>	<u>3646</u>	<u>1921</u>	<u>733388</u>	<u>414770</u>
Jul:	7	5481	3550	1931	725259	396900
Aug:	7	5520	3577	1943	678224	387504
Sep:	7	5529	3593	1936	647039	367985
Oct:	7	5558	3628	1930	633817	360129
Nov:	7	5630	3701	1929	642225	369056
Dec:	7	5603	3683	1920	632104	360027
Jan:	7	5564	3658	1906	649302	374987
Feb:	7	5562	3633	1929	643316	365090
Mar:	7	5639	3723	1916	1003967	522587
Apr:	7	5581	3708	1873	1078631	643434
May	7	5591	3681	1910	794263	429295
Jun:	7	5540	3625	1915	793551	428244
<u>2022-23</u>						
(Jul: - Apr:)	7	<u>5494</u>	<u>3540</u>	<u>1954</u>	<u>925689</u>	<u>486957</u>
Jul:	7	5570	3420	2150	800181	435263
Aug:	7	5534	3736	1798	963632	535843
Sep:	7	5541	3738	1803	965414	538102
Oct:	7	5545	3666	1879	940200	518170
Nov:	7	5611	3665	1946	938432	507671
Dec:	7	5515	3554	1961	846617	433398
Jan:	7	5434	3415	2019	913884	463343
Feb:	7	5418	3403	2015	932003	469248
Mar:	7	5391	3403	1988	962530	492160
Apr:	7	5376	3395	1981	993998	476368

* = Monthly averages over the ten months.

PERFORMANCE OF FOOTWEAR INDUSTRY

Report for the month of April 2023

Coverage

This report covers Forty One (41) factories of Footwear Industry in the Punjab Province.

Production

The factories produced 2665 thousand Pairs of Footwear during the current month, which was 0.2% higher than the previous month.

Employment

Total employment in these factories during the current month was 12468, 0.1%, higher than the last month. Out of this total employment, 9343 were production workers.

PRODUCTIN OF FOOTWEAR

July 2021 to April 2023

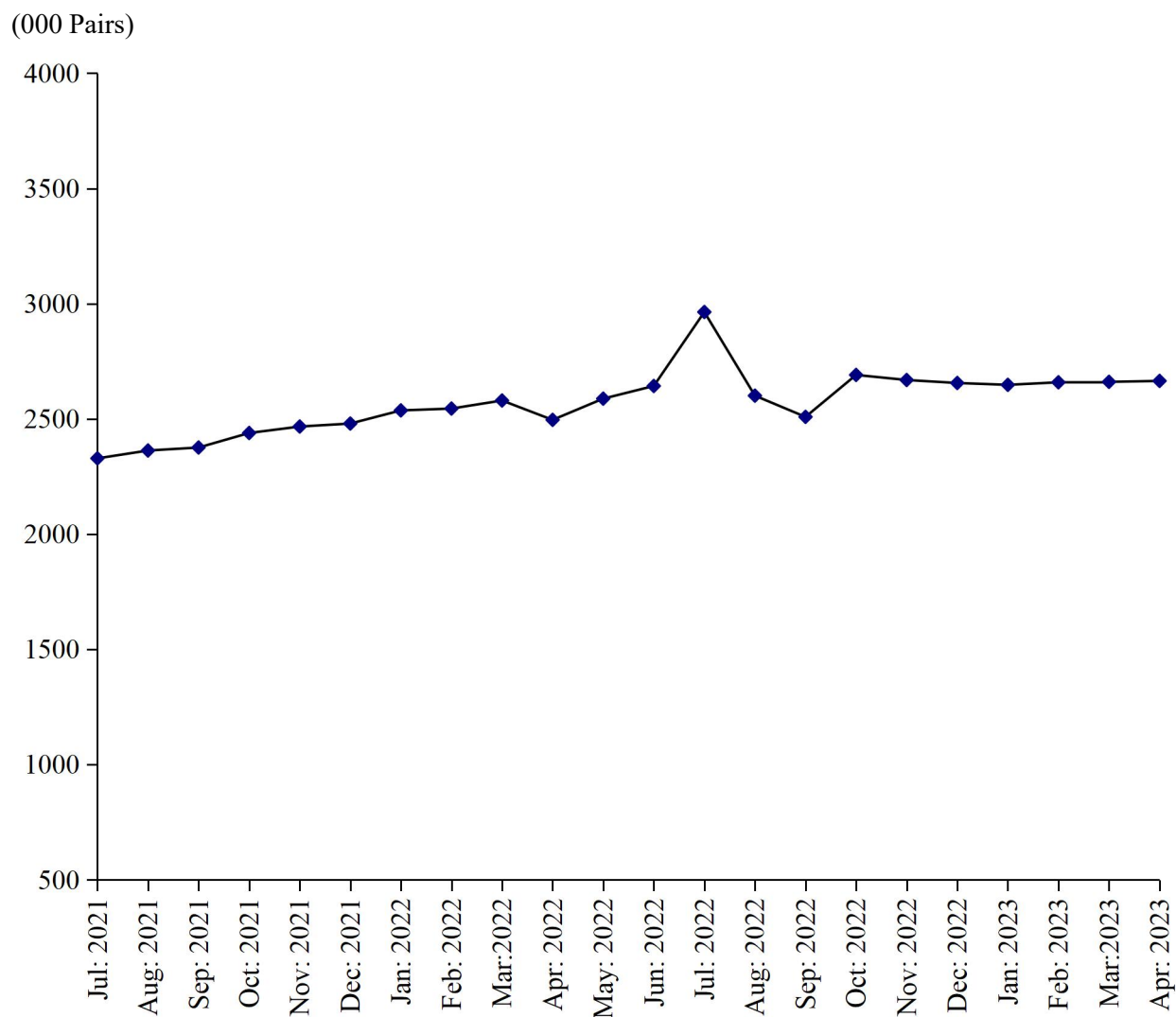


Table No.29 MANUFACTURING ACTIVITY OF FOOTWEAR INDUSTRY

Year (July-June)/ Month	No. Of Reporting Units	Production Of Footwear (000) Pairs)	EMPLOYMENT (NOS.) *	
			Total	Production Workers
2006-07	16	24628	8948	7507
2007-08	16	26865	8592	6928
2008-09	16	30979	8521	7038
2009-10	16	34817	8667	7152
2010-11	40	41008	9699	8116
2011-12	40	41944	9719	8535
2012-13	40	43232	9997	8536
2013-14	40	45030	9967	7937
2014-15	40	55136	9523	7398
2015-16	40	60462	10350	7959
2016-17	41	45476	9778	7401
2017-18	41	37411	9758	7477
2018-19	41	38805	9844	7783
2019-20	41	37860	10346	8451
2020-21	41	25658	10158	7745
2021-22	41	29843	11939	9145
(Jul: – Apr:)	<u>41</u>	<u>24612</u>	<u>11863</u>	<u>9103</u>
Jul:	41	2329	11398	8737
Aug:	41	2363	11624	8935
Sep:	41	2376	11642	8948
Oct:	41	2439	11891	9178
Nov:	41	2467	11907	9192
Dec:	41	2480	11925	9195
Jan:	41	2537	12085	9206
Feb:	41	2545	12092	9209
Mar:	41	2580	12104	9237
Apr:	41	2496	11957	9190
May	41	2588	12164	9219
June	41	2643	12484	9489
<u>2022-23</u>				
(Jul: – Apr:)	<u>41</u>	<u>26723</u>	<u>12414</u>	<u>9371</u>
July	41	2964	12468	9476
Aug:	41	2601	12235	9322
Sep:	41	2509	12014	9306
Oct:	41	2691	12583	9469
Nov:	41	2669	12571	9462
Dec:	41	2656	12452	9338
Jan:	41	2648	12440	9326
Feb:	41	2659	12454	9332
Mar	41	2661	12458	9339
Apr:	41	2665	12468	9343

* = Monthly Average over the ten months.

PERFORMANCE OF LEATHER TANNING INDUSTRY

Report for the month of April 2023

Coverage

The report for the month covers one Hundred and Six (106) Tanneries working in the Punjab Province.

Production

These Tanneries produced 775 thousand Sq. Mtrs. of Upper Leather and 16 M. Tons of Sole Leather during the current month. The Production of Upper Leather during the month was 3.0% higher than the previous month.

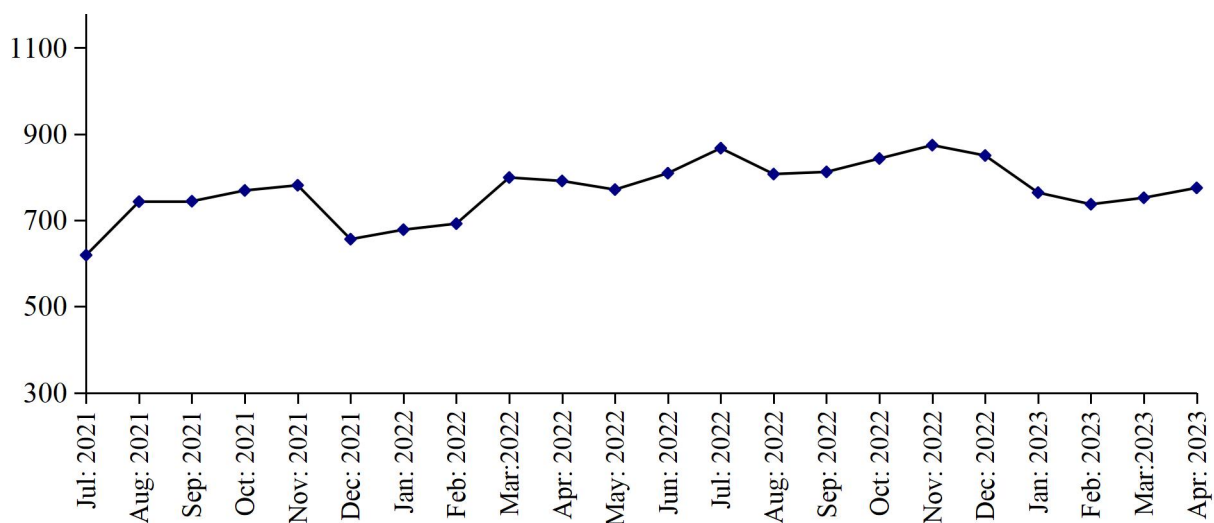
Employment

Total employment in these factories was 2313 persons which was 4.9% higher than the last month. Out of this total employment 1599 persons were production workers.

PRODUCTION OF UPPER LEATHER

July 2021 to April 2023

(000 Sq. Mtrs)



PRODUCTION OF SOLE LEATHER

July 2021 to April 2023

(000 M. Tons)

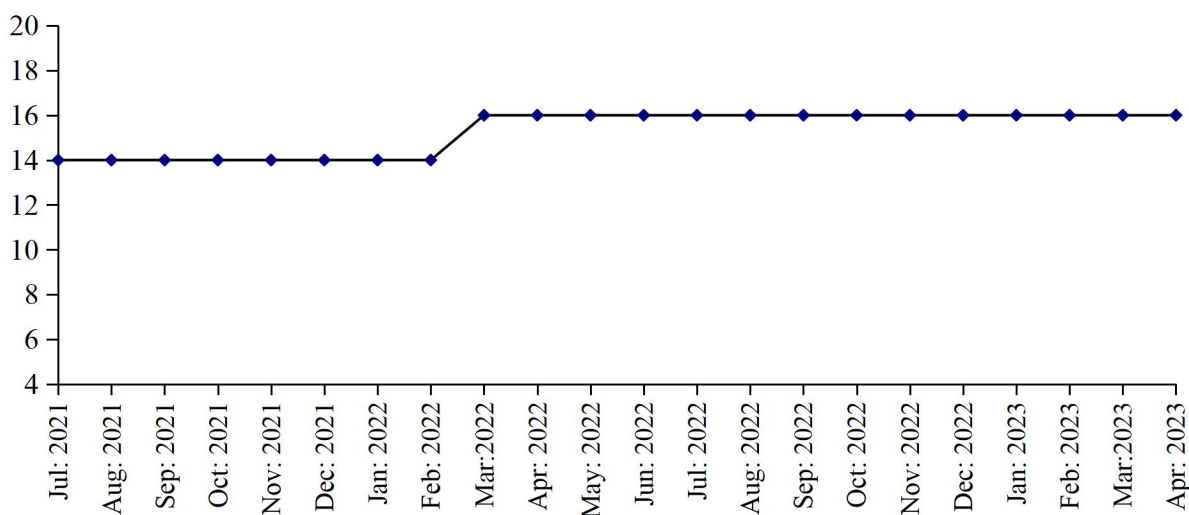


Table No: 30: MANUFACTURING ACTIVITY OF LEATHER TANNING INDUSTRY

Year (July-June) / Month	No. Of Reporting Units	P R O D U C T I O N		EMPLOYMENT (NOS.) *	
		Upper Leather (000 Sq. Mtrs)	Sole Leather (M. Tons)	Total	Production Workers
2006-07	19	5078	126	1296	950
2007-08	19	5833	99	1294	919
2008-09	19	5980	156	1195	910
2009-10	60	10465	215	1711	1325
2010-11	100	12999	381	2234	1813
2011-12	100	11154	417	2133	1709
2012-13	100	10169	356	1824	1318
2013-14	100	10766	287	2404	1703
2014-15	100	10071	241	2539	1821
2015-16	100	9563	198	2550	1935
2016-17	106	10330	156	2956	2174
2017-18	107	11150	168	3071	2248
2018-19	107	11045	168	2938	2135
2019-20	108	9340	168	2787	2006
2020-21	108	7956	168	2467	1755
2021-22	106	8852	176	2261	1591
(Jul: –Apr:)	<u>106</u>	<u>7272</u>	<u>144</u>	<u>2291</u>	<u>1602</u>
Jul:	106	619	14	2489	1778
Aug:	106	743	14	2409	1725
Sept:	106	744	14	2417	1705
Oct:	106	769	14	2383	1694
Nov:	106	781	14	2398	1701
Dec:	106	656	14	2129	1428
Jan:	106	678	14	2138	1441
Feb:	106	692	14	2194	1489
Mar:	106	799	16	2195	1492
Apr:	106	791	16	2155	1564
May	106	771	16	2067	1511
Jun:	106	809	16	2154	1567
<u>2022-23</u>					
(Jul: – Apr:)	<u>106</u>	<u>8081</u>	<u>160</u>	<u>2230</u>	<u>1615</u>
Jul:	106	867	16	2243	1629
Aug:	106	807	16	2215	1605
Sep:	106	812	16	2215	1605
Oct:	106	843	16	2235	1665
Nov:	106	874	16	2235	1672
Dec:	106	850	16	2213	1582
Jan:	106	764	16	2225	1613
Feb:	106	737	16	2205	1592
Mar:	106	752	16	2203	1590
Apr:	106	775	16	2313	1599

* = Monthly average over the ten months.

PERFORMANCE OF PAPER & PAPER BOARD INDUSTRY

Report for the month of April 2023

Coverage

This report covers forty seven (47) factories of Paper & Paper Board Industries in the Punjab Province.

Production

Forty eight factories produced 18012 Metric Tons of paper, which comprises of 8285 Metric Tons of writing, 4631 Metric Tons of printing and 5096 Metric Tons of packing and other 28264 Metric Tons of paper board during the month. The production of paper and paper board was 0.8% lower and 28.2% lower than the last month respectively.

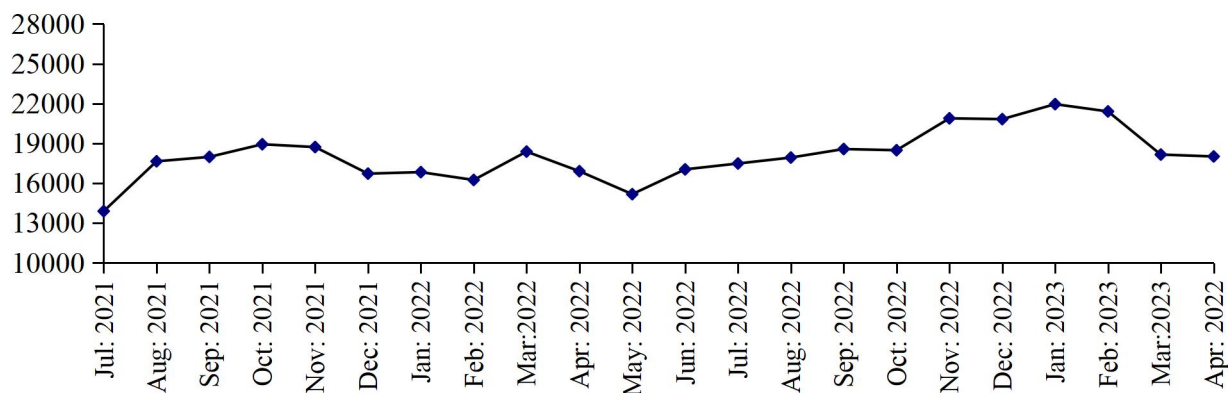
Employment

Total employment during the month was 5111 persons, which was 0.1% lower than the last month. Out of this total employment, 3679 were production workers.

PRODUCTION OF PAPER & PAPER BOARD

July 2021 to April 2023

(M. Tons)



(M. Tons)

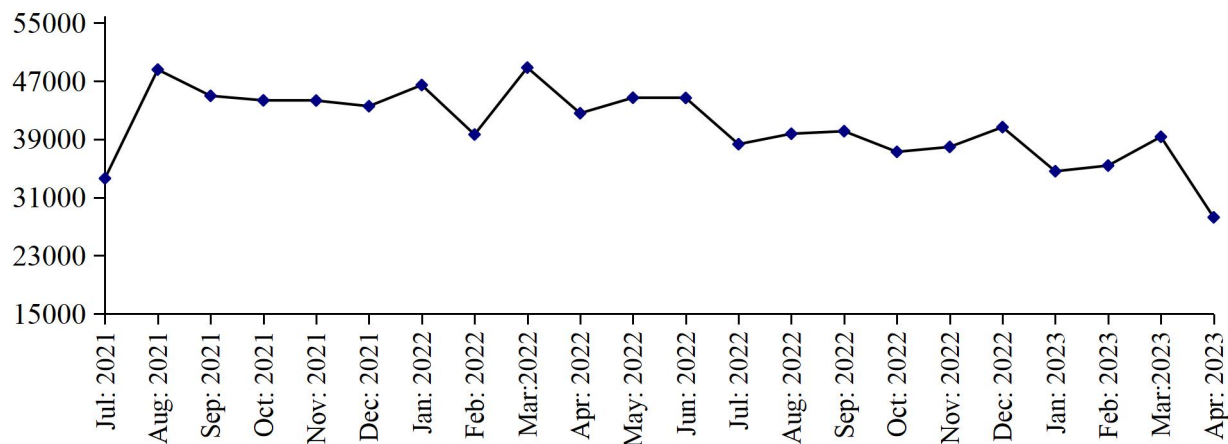


Table No: 31 MANUFACTURING ACTIVITY OF PAPER & PAPER BOARD INDUSTRY.

Year (July-June)/ Month	No. Of Reporting Units	P R O D U C T I O N (M.Tons)			EMPLOYMENT (NOS.) *	
		Paper	Paper Board	Paper & Paper Board	Total	Production Workers
2006-07	34	149972	276010	425982	4975	3983
2007-08	34	180162	223883	404045	5532	4218
2008-09	34	244838	165797	410635	5835	4845
2009-10	41	240775	165269	406044	5398	4178
2010-11	41	220587	194084	414671	5787	3945
2011-12	41	236217	287645	523862	5403	3539
2012-13	43	218980	376138	595118	5702	3774
2013-14	43	205252	457794	663046	6031	4053
2014-15	46	190193	407658	597851	6086	4370
2015-16	50	219040	370427	589467	6169	4629
2016-17	49	226251	398950	625201	6065	4614
2017-18	48	237723	451717	689440	6130	4570
2018-19	47	225544	429716	655260	5567	4052
2019-20	47	220495	441640	662135	5112	3683
2020-21	47	191962	488542	680504	5101	3660
2021-22	47	204434	526353	730787	5026	3600
(Jul: – Apr:)	<u>47</u>	<u>172225</u>	<u>436954</u>	<u>609179</u>	<u>5027</u>	<u>3601</u>
Jul:	47	13887	33616	47503	5026	3605
Aug:	47	17645	48583	66228	5028	3603
Sep:	47	17979	44978	62957	5024	3598
Oct:	47	18930	44353	63283	5026	3602
Nov:	47	18720	44326	63046	5029	3604
Dec:	47	16718	43548	60266	5034	3610
Jan:	47	16829	46459	63288	5036	3616
Feb:	47	16240	39653	55893	5025	3600
Mar:	47	18377	48858	67235	5019	3591
Apr:	47	16900	42580	59480	5021	3585
May	47	15170	44714	59884	5018	3585
Jun:	47	17039	44685	61724	5026	3595
<u>2022-23</u>						
(Jul: – Apr:)	<u>47</u>	<u>193694</u>	<u>371980</u>	<u>565674</u>	<u>5097</u>	<u>3644</u>
Jul:	47	17481	38625	56106	5036	3596
Aug:	47	17928	39762	57690	5090	3625
Sep:	47	18570	40112	58682	5090	3625
Oct:	47	18482	37273	55755	5105	3633
Nov:	47	20884	37948	58832	5114	3646
Dec:	47	20825	40670	61495	5114	3647
Jan:	47	21953	34604	56557	5099	3647
Feb:	47	21405	35382	56787	5096	3651
Mar:	47	18154	39340	57494	5116	3687
Apr:	47	18012	28264	46276	5111	3679

* = Monthly average over the ten months.

PERFORMANCE OF LIGHT ENGINEERING INDUSTRY

Report for the month of April 2023

RE-ROLLED STEEL

Coverage

This report covers Forty One (41) factories of Re-Rolled Steel in the Punjab Province.

Production

Forty one factories covered under the survey produced 23650 Metric Tons of steel bars/angles during April 2023, which was 2.7% lower than the last month.

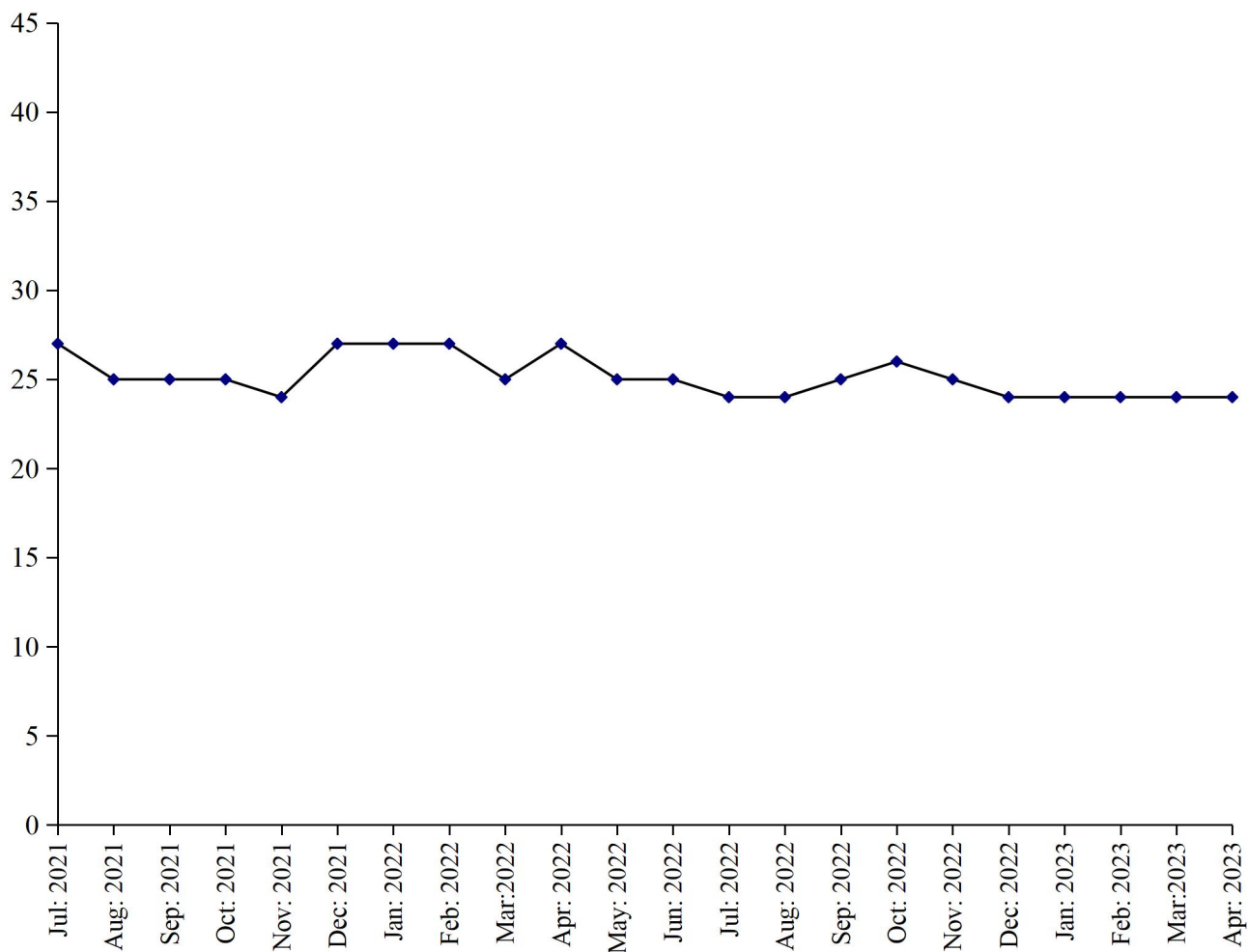
Employment

Total employment in the industry during the month was 1090, which was 0.6% lower than the last month. Out of this total employment, 802 were production workers.

PRODUCTION OF RE-ROLLED STEEL

July 2021 to April 2023

(000 M. Tons)



BICYCLES

Coverage

This report covers three (3) factories of Bicycles in the Punjab.

Production

Three factories being covered in the survey manufactured and assembled 11915 complete bicycles during March 2023, which was 1.0% higher than the last month.

Employment

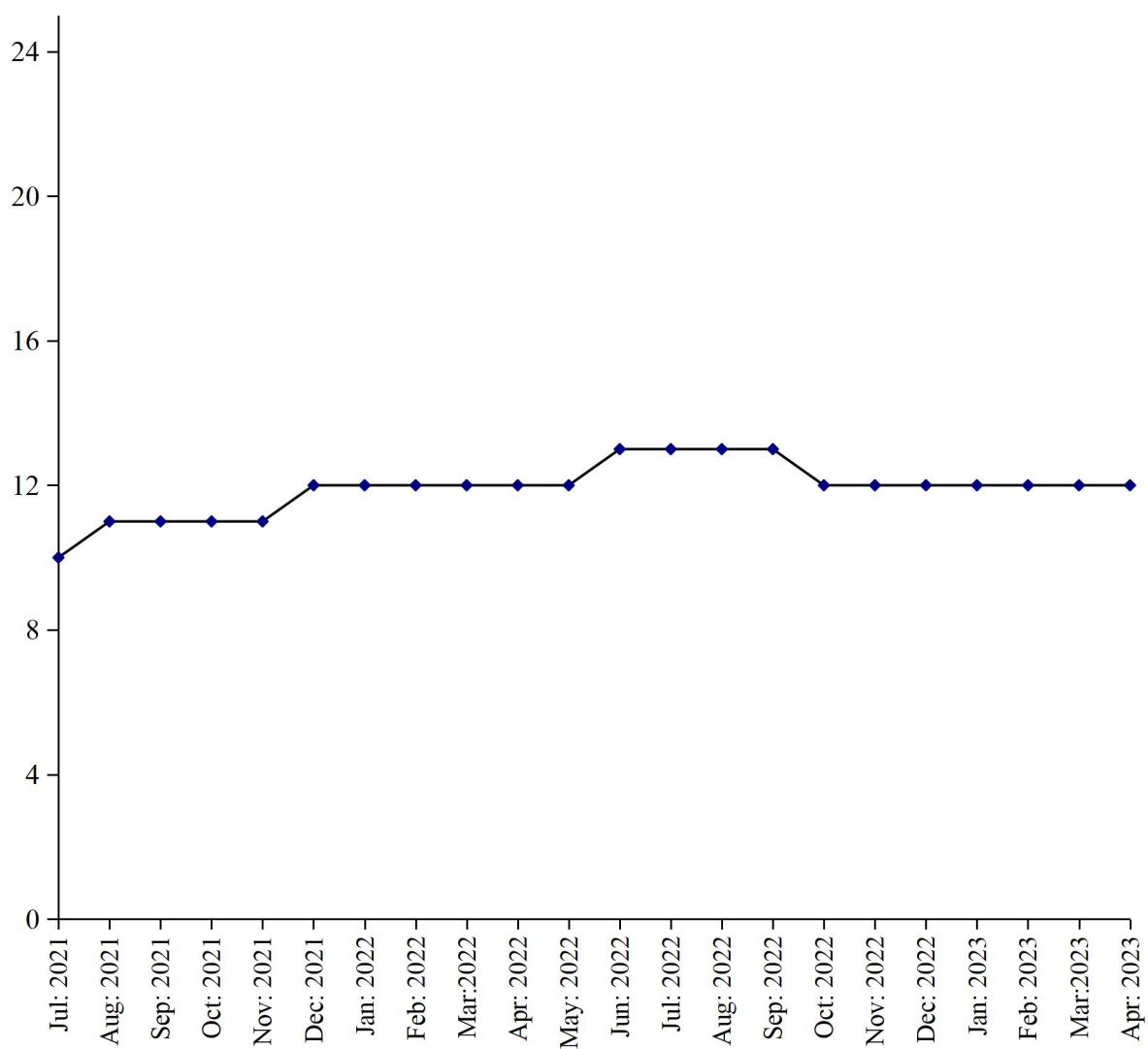
Total employment in these factories during the month was 686, which was same as the last month.

Out of this total employment, 527 were production workers.

PERFORMANCE OF BICYCLES

July 2021 to April
2023

(000 M. Tons)



ELECTRIC FANS

Coverage

This report covers one hundred and twenty six (126) factories of Electric Fans in the Punjab Province.

Production

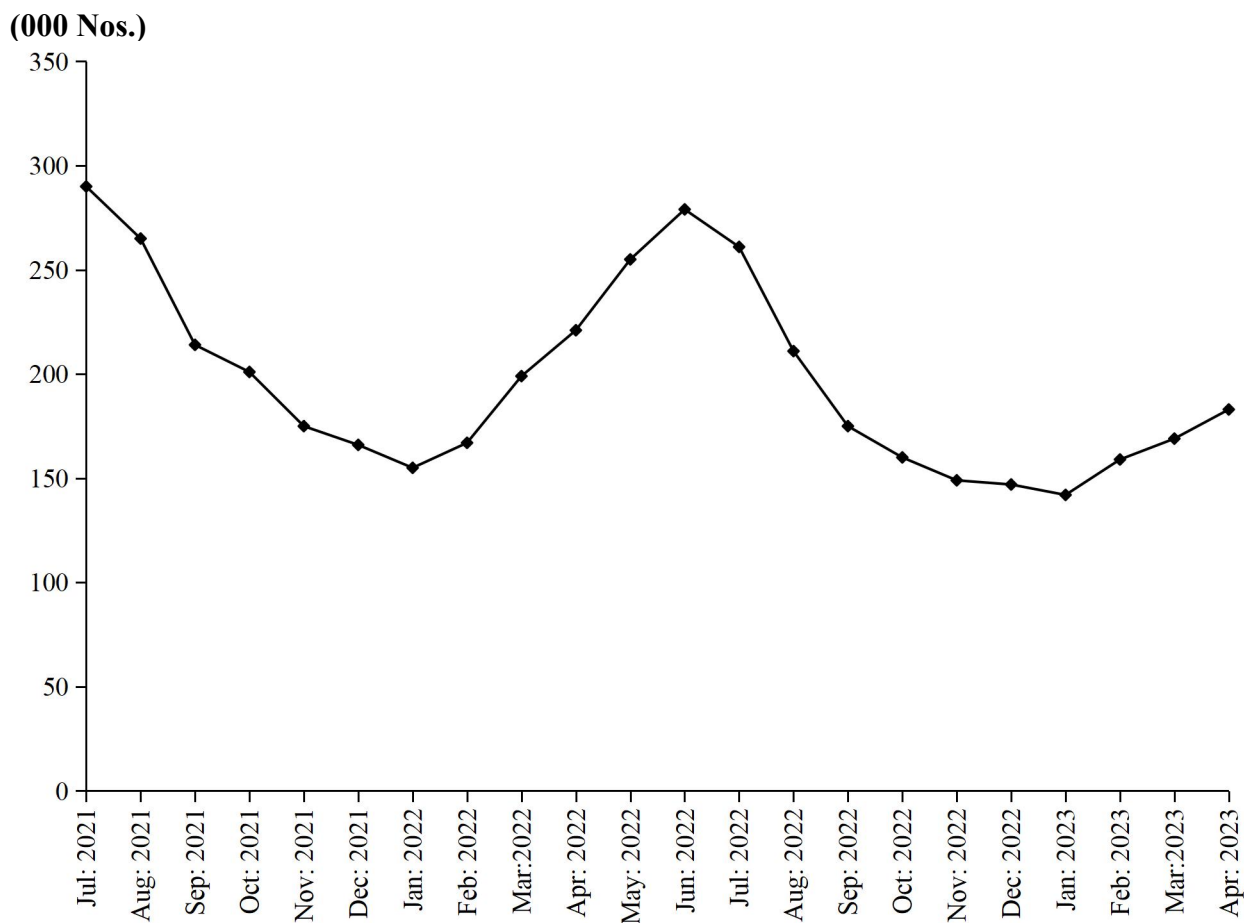
One hundred and twenty six factories covered under the survey manufactured 182919 (ceiling fans, 102917 pedestal fans, 24134 and other fans 55868) during April, 2023, which was 8.2% higher than the last month.

Employment

These factories reported 2060 total employment during the month, which was 1.0% higher than the last month. Out of this total employment, 1840 were production workers.

PERFORMANCE OF ELECTRIC FANS

July 2021 to April 2023



ELECTRIC MOTORS

Coverage

This report covers thirty (30) factories of Electric Motors in the Punjab Province.

Production

Thirty factories covered under the survey manufactured 1470 electric motors during the month, which was 0.8% lower than the last month.

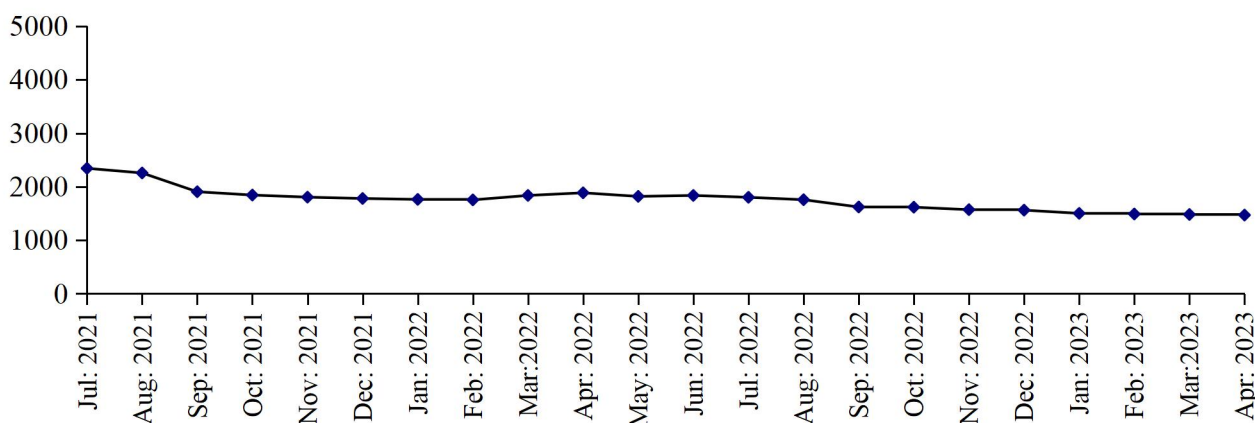
Employment

Total Employment in these factories during the month which was 164, which was 1.2% lower than the last month. Out of this total employment, 140 were production workers.

PRODUCTION OF ELECTRIC MOTORS

(Nos.)

July 2021 to April 2023



DIESEL ENGINES

Coverage

This report covers fifteen (15) factories of Diesel Engines in the Punjab Province.

Production

These fifteen factories covered under the survey and 152 complete diesel engines manufactured during the month, which was 1.9% lower than the last month.

Employment

Total employment in these factories during the month was 24, which is same as it was in previous month. Out of this total employment, 16 were production workers.

PRODUCTION OF DIESEL ENGINES

(Nos.)

July 2021 to April 2023

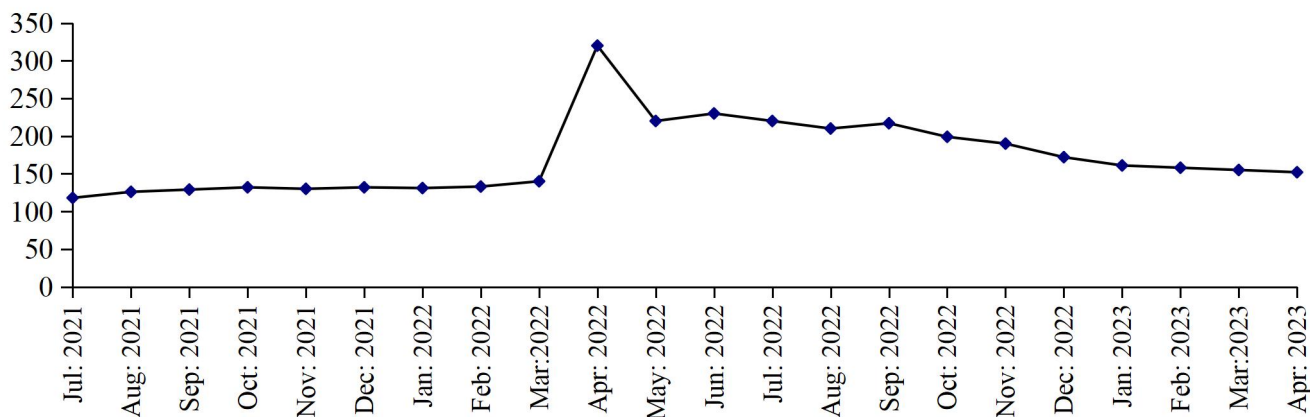


Table No: 32 MANUFACTURINGACTIVITYOFLIGHT ENGINEERING INDUSTRY

Year (July – June) / Month	Re-rolled Steel Bars / Angles (M. Tons)	Bicycles (Nos.)	Electric Fans (Nos.)	Electric Motors (Nos.)	Diesel Engines (N0s.)
2006-07	490894	486349	1469494	7942	14997
2007-08	411062	535519	1654165	5818	18952
2008-09	343506	419897	1697140	6604	16906
2009-10	321369	447207	2128884	7068	20157
2010-11	312433	345272	1940346	7667	10285
2011-12	289874	262096	1858883	5857	2861
2012-13	266669	232979	1909412	5752	2219
2013-14	257569	206459	1870475	9906	2117
2014-15	264406	210931	1870291	9013	2045
2015-16	320769	198966	1970506	7319	495
2016-17	367619	200218	2461369	9206	1554
2017-18	485131	202168	2498919	41793	1120
2018-19	382890	173545	2508085	56819	908
2019-20	289350	141125	2124301	39312	1294
2020-21	312922	79310	2498634	30054	1644
2021-22	308749	141236	2589903	22832	1941
(Jul: – Apr:)	<u>258680</u>	<u>115546</u>	<u>2055433</u>	<u>18176</u>	<u>1491</u>
Jul:	26742	10400	290116	2344	118
Aug:	24691	10700	265414	2257	126
Sep:	25191	11000	214096	1906	129
Oct:	25165	11402	201040	1844	132
Nov:	24414	11490	175414	1805	130
Dec:	26782	11700	165902	1780	132
Jan:	26680	12019	155467	1763	131
Feb:	26512	12129	167449	1754	133
Mar:	25494	12402	199415	1837	140
Apr:	27009	12304	221120	1886	320
May	25144	12304	255147	1819	220
Jun:	24925	12990	279413	1837	230
<u>2022-23</u>					
(Jul: – Apr:)	<u>244886</u>	<u>122548</u>	<u>1756540</u>	<u>15873</u>	<u>1834</u>
Jul:	24423	13007	261144	1802	220
Aug:	24411	13000	211119	1757	210
Sep:	25017	12519	174917	1621	217
Oct:	26077	12409	160121	1617	199
Nov:	24861	12301	149299	1571	190
Dec:	24006	12102	147102	1562	172
Jan:	24089	11799	142010	1502	161
Feb:	24050	11687	158917	1490	158
Mar:	24302	11809	168992	1481	155
Apr:	23650	11915	182919	1470	152

Table No: 33 TOTAL EMPLOYMENT (Nos.) OF LIGHT ENGINEERING INDUSTRY*

Year (July – June)/ Month	Re-rolled Steel Bars / Angles (M.Tons)	Bicycles (Nos.)	Electric Fans (Nos.)	Electric Motors (Nos.)	Diesel Engines (N0s.)
2006-07	1165	2046	1867	112	199
2007-08	1106	2160	1881	72	199
2008-09	1103	2257	1894	69	200
2009-10	1134	2124	2124	63	223
2010-11	1218	2009	2120	64	191
2011-12	1193	1612	2351	64	155
2012-13	1188	1318	2172	58	147
2013-14	1269	1214	2307	64	154
2014-15	1299	1060	2208	63	154
2015-16	1317	907	2090	65	150
2016-17	1372	885	2325	121	146
2017-18	1310	883	2549	130	133
2018-19	1304	759	2673	158	52
2019-20	1013	751	1817	191	22
2020-21	1067	686	2141	197	20
2021-22	1077	686	2229	213	21
(Jul: - Apr:)	<u>1078</u>	<u>686</u>	<u>2121</u>	<u>202</u>	<u>21</u>
Jul:	1111	686	2260	215	21
Aug:	1082	686	2285	215	21
Sep:	1086	686	2141	209	21
Oct:	1061	686	2065	200	21
Nov:	1054	686	2050	198	21
Dec:	1072	686	2030	197	21
Jan:	1070	686	2010	195	21
Feb:	1080	686	2050	194	21
Mar:	1078	686	2140	196	21
Apr:	1082	686	2186	199	24
May	1074	686	2199	197	24
Jun:	1071	686	2229	198	24
<u>2022-23</u>					
(Jul: – Apr:)	<u>1093</u>	<u>686</u>	<u>2092</u>	<u>178</u>	<u>24</u>
Jul:	1070	686	2210	192	24
Aug:	1067	686	2188	190	24
Sep:	1097	686	2144	188	24
Oct:	1113	686	2130	184	24
Nov:	1106	686	2102	178	24
Dec:	1091	686	2020	173	24
Jan:	1093	686	2000	170	24
Feb:	1095	686	2019	168	24
Mar:	1097	686	2040	166	24
Apr:	1090	686	2060	164	24

* = Monthly averages over the ten months.

Table No: 34 PRODUCTION WORKERS (Nos.) OF LIGHT ENGINEERING INDUSTRY *

Year (July – June)/ Month	Re-rolled Steel Bars / Angles (M.Tons)	Bicycles (Nos.)	Electric Fans (Nos.)	Electric Motors (Nos.)	Diesel Engines (N0s.)
2006-07	821	1814	1483	89	146
2007-08	780	1900	1545	62	157
2008-09	757	1905	1542	60	160
2009-10	782	1892	1748	57	154
2010-11	870	1843	1709	57	126
2011-12	857	1540	1904	57	99
2012-13	843	1289	1761	50	95
2013-14	905	1161	1850	55	99
2014-15	920	992	1745	54	100
2015-16	934	836	1658	56	97
2016-17	976	820	1865	113	93
2017-18	926	804	1994	119	86
2018-19	916	696	2066	122	34
2019-20	706	679	1425	147	15
2020-21	780	527	1735	151	14
2021-22	786	527	1815	157	16
(Jul: – Apr:)	<u>787</u>	<u>527</u>	<u>1800</u>	<u>158</u>	<u>15</u>
Jul:	810	527	1850	168	15
Aug:	785	527	1840	167	15
Sep:	788	527	1830	165	15
Oct:	783	527	1780	155	15
Nov:	780	527	1765	153	15
Dec:	785	527	1750	152	15
Jan:	785	527	1730	150	15
Feb:	788	527	1760	150	15
Mar:	788	527	1810	150	15
Apr:	782	527	1877	157	16
May	777	527	1888	156	16
Jun:	775	527	1907	157	16
<u>2022-23</u>					
(Jul: – Apr:)	<u>798</u>	<u>527</u>	<u>1830</u>	<u>146</u>	<u>16</u>
Jul:	773	527	1899	154	16
Aug:	770	527	1886	152	16
Sep:	784	527	1871	150	16
Oct:	819	527	1862	150	16
Nov:	815	527	1805	147	16
Dec:	801	527	1780	145	16
Jan:	804	527	1770	142	16
Feb:	805	527	1790	140	16
Mar:	807	527	1802	140	16
Apr:	802	527	1840	140	16

* = Monthly averages over the ten months.

PERFORMANCE OF PHARMACEUTICAL INDUSTRY

Report for the month of April 2023

Coverage

This report covers thirty six (36) Pharmaceutical Industries in the Punjab Province.

Production

Overall production of these 36 pharmaceutical factories during the month was 2.8% higher and 13.9% lower than April 2022 respectively.

These factories produced 278114 thousand Nos. of Tablets, 1864 thousand Ltrs., of Liquids/Syrups, 42917 thousand Nos. of Capsules, 14912 thousand Nos. of Injections, 53160 kgs. of Ointments and 3 thousand Ltrs. of Galanicals (Tincture/Spirits). The production of Tablets, Capsules 4.0% and 4.7% higher whereas the production of Injections and Ointments are 1.4%, 3.8%, Liquids and Galanicals 1.2% lower, 40% lower than the last month.

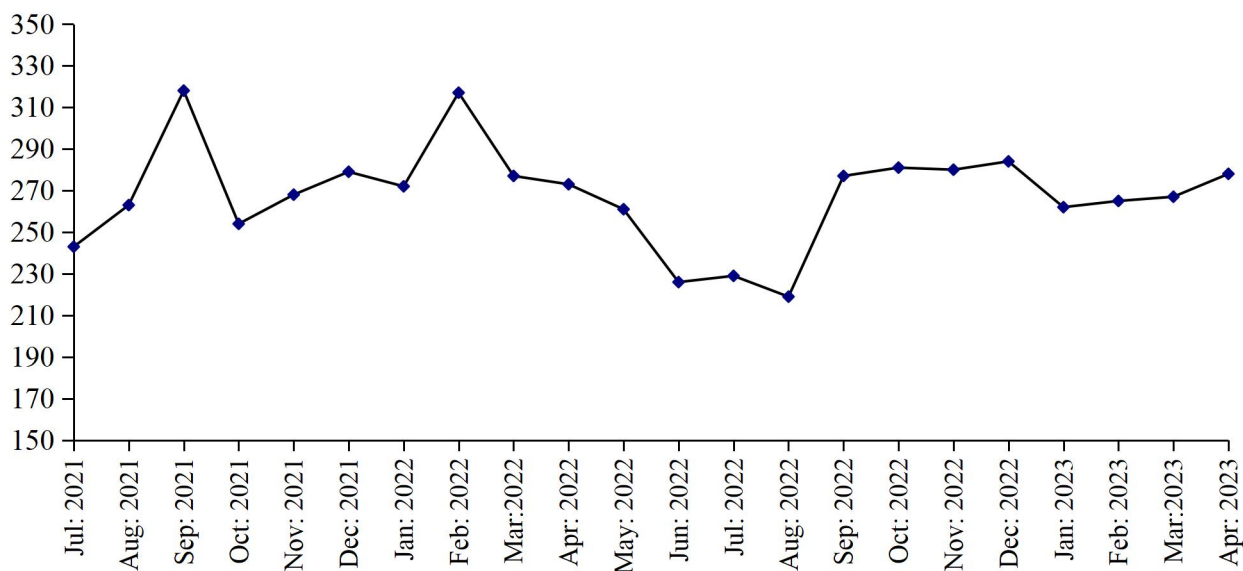
Employment

Total employment in these factories during the month was 8028 which is 0.1% lower than the last month. Out of this total employment 3256 were production workers. Total wages/salaries during the month were 279.1 million rupees.

PRODUCTION OF TABLETS

July 2021 to April 2023

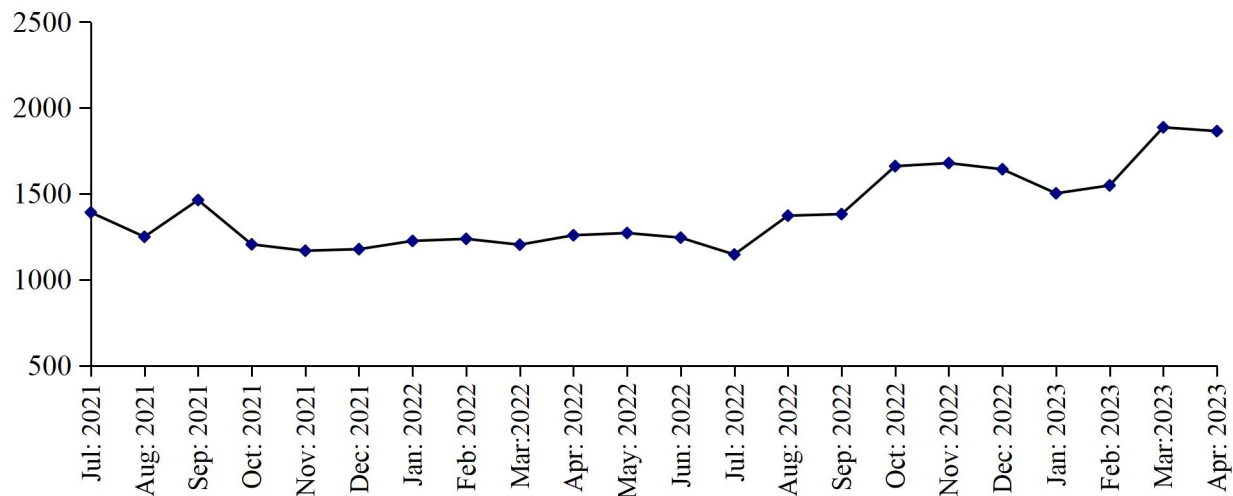
(000 Nos.)



PRODUCTION OF LIQUIDS

July 2021 to April 2023

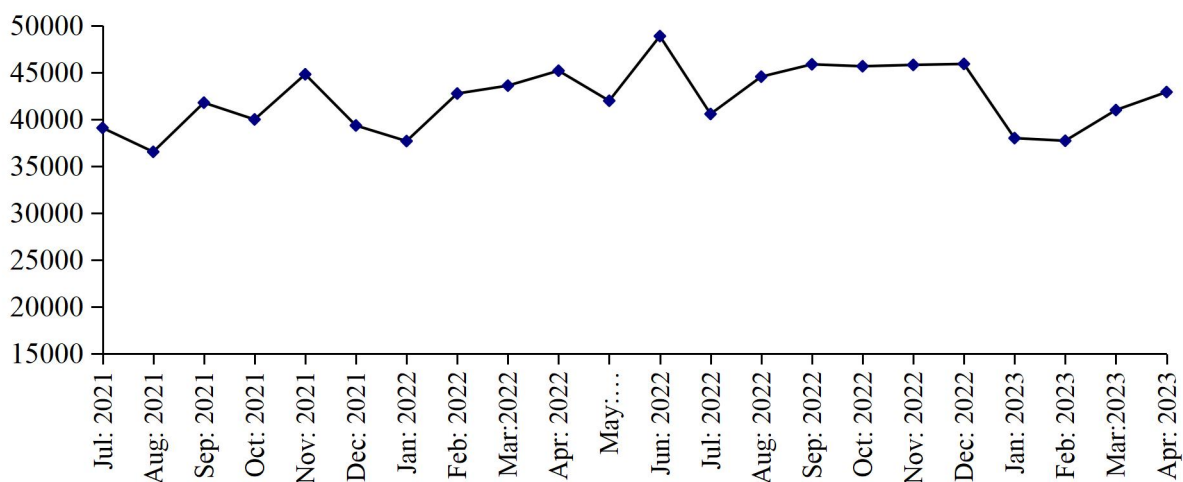
(000 Nos.)



PRODUCTION OF CAPSULES

July 2021 to April 2023

(000 Nos.)



PRODUCTION OF INJECTIONS

July 2021 to April 2023

(000 Nos.)

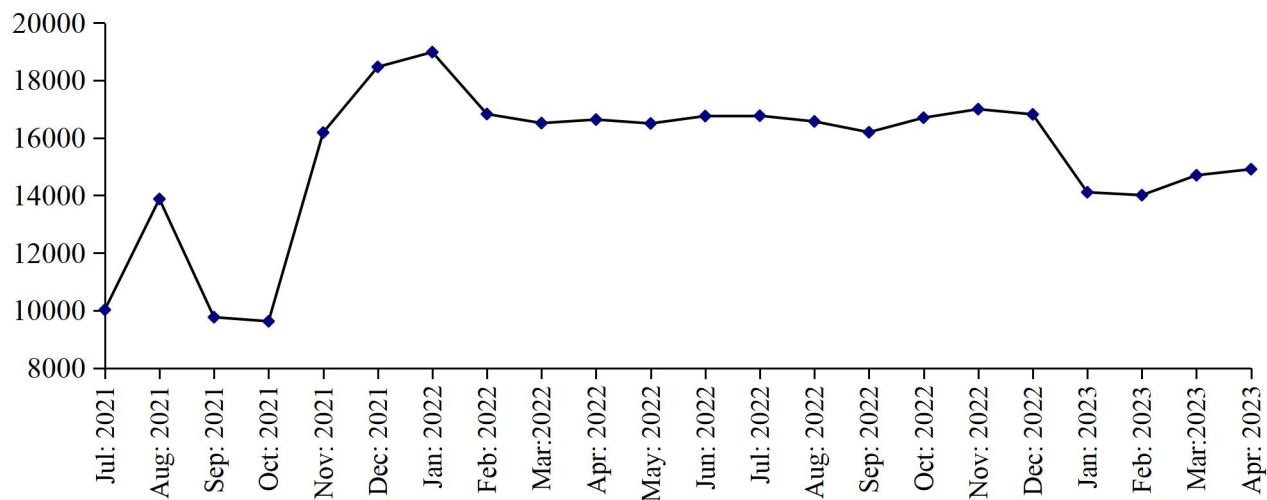


Table 35: MANUFACTURING ACTIVITY OF PHARMACEUTICAL INDUSTRY

Year (July – June) / Month	No. Of Reporting Factories	P R O D U C T I O N					
		Tablets (000 Nos.)	Liquids/ Syrups (000Ltrs.)	Capsules (000 Nos.)	Injections (000 Nos.)	Ointments (Kgs.)	Galanicals Tinctures/ Spirits (000 Ltrs.)
2006-07	33	2722382	9277	131360	99050	69678	189
2007-08	38	2459558	23771	148007	110837	98499	87
2008-09	40	2286638	21267	121093	89615	105595	73
2009-10	40	2373104	23222	134594	99608	189148	62
2010-11	41	2486495	25211	165294	109708	187430	50
2011-12	41	2487861	25546	224249	132544	209841	41
2012-13	40	2873661	35457	339450	119598	196597	34
2013-14	36	2639613	16264	261919	137051	238299	185
2014-15	36	2593592	18838	310520	140827	229778	75
2015-16	36	2823449	21636	339151	133352	242367	46
2016-17	36	2530717	24085	295120	194717	732361	343
2017-18	35	2893883	15602	371962	149607	570468	121
2018-19	36	2826410	14207	420278	144788	567249	39
2019-20	36	2847315	14011	447276	119438	640721	74
2020-21	36	3096704	17504	481498	110866	595075	69
2021-22	36	3249998	15091	501673	180141	518897	54
(Jul: – Apr:)	36	2762885	12576	410801	146878	417620	45
Jul:	36	242868	1391	39093	10024	48632	3
Aug:	36	263232	1249	36537	13877	47480	5
Sep:	36	318031	1463	41783	9766	53293	6
Oct:	36	253686	1205	39993	9624	55395	4
Nov:	36	268300	1168	44809	16186	35665	8
Dec:	36	278537	1177	39348	18468	36490	7
Jan:	36	271875	1225	37686	18983	41480	3
Feb:	36	316549	1237	42758	16830	32575	2
Mar:	36	276784	1203	43600	16515	28100	3
Apr:	36	273023	1258	45194	16638	38510	4
May	36	261458	1271	41986	16503	47835	3
Jun:	36	225655	1244	48886	16760	53442	6
2022-23							
(Jul: – Apr:)	36	2642977	15679	428044	157796	542236	29
Jul:	36	228997	1146	40576	16771	53945	2
Aug:	36	218500	1372	44558	16573	59955	3
Sep:	36	276502	1381	45875	16197	60590	5
Oct:	36	281325	1660	45670	16702	60010	5
Nov:	36	280269	1678	45814	17000	50540	3
Dec:	36	284128	1642	45919	16819	50819	1
Jan:	36	262313	1502	37999	14110	51112	2
Feb:	36	265419	1548	37719	14010	50913	2
Mar:	36	267410	1886	40997	14702	51192	5
Apr:	36	278114	1864	42917	14912	53160	3

Table 36: EMPLOYMENT AND WAGES / SALARIES OF PHARMACEUTICAL INDUSTRY

Year (July – June) / Month	No. Of Reporting Factories	E M P L O Y M E N T (Nos.)			WAGES /SALARIES (000 Rs.)	
		Total	Production Workers	Office Staff	Total	Production Workers
2006-07	33	5148	2596	2552	37178	14090
2007-08	38	5591	2914	2677	60574	27592
2008-09	40	5737	3115	2622	75446	35208
2009-10	40	5967	3294	2673	84295	41482
2010-11	41	7468	3475	3993	109964	38722
2011-12	41	7802	3518	4284	122250	38078
2012-13	40	7619	3397	4222	128323	37873
2013-14	36	7255	3043	4212	141281	37844
2014-15	36	7271	3136	4135	149144	37763
2015-16	36	6887	2887	4000	142875	38347
2016-17	36	7069	3338	3731	166039	42770
2017-18	35	7190	3095	4095	180431	46461
2018-19	36	7287	3080	4207	186677	48238
2019-20	36	7926	3244	4682	215121	53959
2020-21	36	7726	3388	4338	241910	59134
2021-22	36	8092	3318	4774	263957	61029
(Jul: – Apr:)	36	8085	3315	4770	263362	59390
Jul:	36	8252	3306	4946	247515	58344
Aug:	36	8013	3190	4823	257671	57722
Sep:	36	8073	3341	4732	261127	52000
Oct:	36	8108	3356	4752	270869	63056
Nov:	36	8054	3357	4697	280316	62227
Dec:	36	8033	3326	4707	261493	61262
Jan:	36	8055	3323	4732	260153	60755
Feb:	36	8063	3324	4739	260283	60348
Mar:	36	8097	3313	4784	265353	60829
Apr:	36	8114	3321	4793	268839	67358
May	36	8135	3344	4791	269121	67740
Jun:	36	8101	3318	4783	264743	60704
2022-23						
(Jul: – Apr:)	36	8051	3289	4762	276106	64238
Jul:	36	8080	3313	4767	268248	61642
Aug:	36	8043	3319	4724	270475	61754
Sep:	36	8060	3324	4736	271141	61847
Oct:	36	8072	3327	4745	272211	61902
Nov:	36	8067	3286	4781	278191	65212
Dec:	36	8060	3280	4780	279040	65456
Jan:	36	8040	3268	4772	279510	65740
Feb:	36	8034	3262	4772	279010	65602
Mar:	36	8033	3260	4773	280449	66102
Apr:	36	8028	3256	4772	282779	67127

* = Monthly average over the ten months.

**LIST OF IMPORTANT TELEPHONES
BUREAU OF STATISTICS, PUNJAB AND ITS FIELD OFFICES**

NAME OF OFFICERS	DESIGNATION	OFFICE TELEPHONE
Sajid Rasul	Director General	042-99232901
Saira Abid	Deputy Director (CIS)	042-99232907
Sana Jabbar	Assistant Director (CIS)	-do-
Sana Ashraf	Statistical Officer (CIS)	-do-
Muhammad Kashif	Statistical Officer (CIS)	-do-
Zia Ahmad Babar	Statistical Officer (CIS)	-do-
Syed Saqlain	Statistical Officer (CIS)	-do-
DESIGNATION	BUREAU'S FIELD OFFICES/ADDRESS	
Deputy Director	Tosha Khana Near Cholistan Development Authority, Bahawalpur	062-9250193
Deputy Director	House No. 70-A, Khyaban-e-Sarwar, Dera Ghazi Khan	064-9330108
Deputy Director	2nd Floor Azam Plaza, Near Passport Office, Bukhari Road, Gujranwala	055-9200419
Deputy Director	P-45, Main Road, Al Faiz Colony, Satiana Road Faisalabad	041-9330531
Deputy Director	Near Circuit House, Multan	061-9200930
Deputy Director	Abad Complex Murree Road, Rawalpindi	051-9292035
Deputy Director	52 Umar Park, Sargodha	048-3765387
Deputy Director	34-H Shadman Town, Sahiwal	0404-4507560
Assistant Director	House No. 24, Z-Block, Model Town, Bahawalnagar	063-9330002
Assistant Director	Mohallah Mandi Town, House No.198 Block No. 12 Near Pracha Filling Station, Jhang Road, Bhakkar	0453-9200338
Assistant Director	Street No.4 2nd Floor Mohallah Shumali Chah Loharn Behkari Road, Chakwal	0543-554086
Assistant Director	House No.720-A Gulberg Colony, Kasur	049-2723615
Assistant Director	House No. 190, Employees Colony, Layyah	0606-920273
Assistant Director	Gallah Hunter Pura, Opposite Larri Adda, Christian Town, Sialkot	052-4291219
Assistant Director	Opposite Govt. Vocational College, Nabi Pura, Hiran Minar Road, Sheikhupura	056-3791770